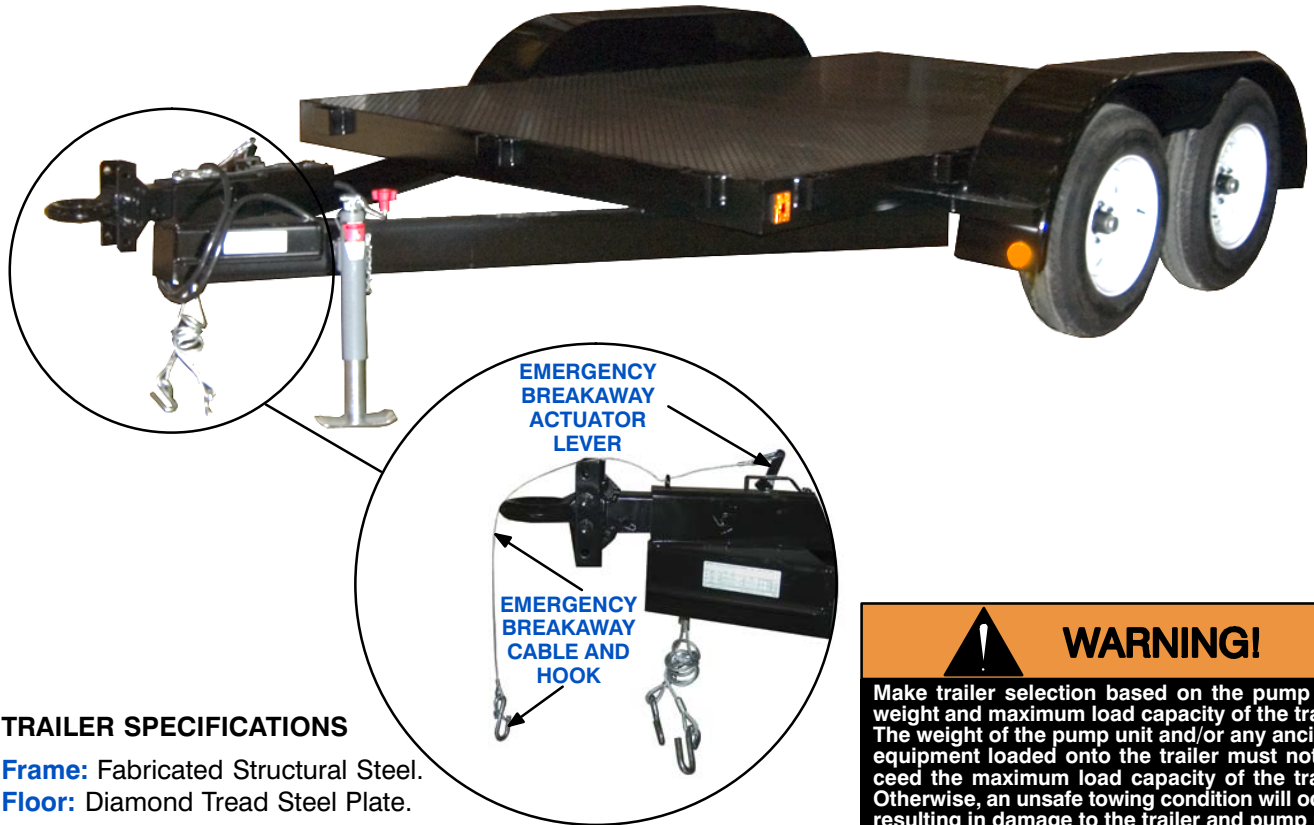


ACDEU

# Tandem Axle Over-the-Road Trailers



(Satisfy U.S. and Canada D.O.T. Requirements)

**29313— Models****TRAILER SPECIFICATIONS****Frame:** Fabricated Structural Steel.**Floor:** Diamond Tread Steel Plate.**2-5/16" Ball Hitch w/Surge Brakes:** -011 and -012 Models.**2-5/16" Ball Hitch w/Electric Brakes\*:** -015 and -016 Models.**3" I.D. Lunette Eye w/Surge Brakes:** -013 and -014 Models.**3" I.D. Lunette Eye w/Electric Brakes\*:** -017 and -018 Models.**Maximum Load Capacity (GVRW):** 6,000 Lb. (2721 Kg.).

Two 3500 Lb. (1588 Kg.) Leaf Spring Axles. ST205/75 D15 Bias Tires.

200 Lb. (91 Kg.) Maximum Tongue Weight.

**2-5/16" Ball Hitch w/Surge Brakes:** -023 and -024 Models.**2-5/16" Ball Hitch w/Electric Brakes\*:** -019 and -020 Models.**3" I.D. Lunette Eye w/Surge Brakes:** -025 and -026 Models.**3" I.D. Lunette Eye w/Electric Brakes\*:** -021 and -022 Models.**Maximum Load Capacity (GVRW):** 12,000 Lb. (5443 Kg.).

Two 6000 Lb. (2722 Kg.) Leaf Spring Axles. ST235/80 R16 Radial Tires.

218 Lb. (99 Kg.) Maximum Tongue Weight.

**Standard Equipment (All Models):** Adjustable Pump Positioning for Proper Weight Distribution. 12 Volt Electrical System w/Tail, Brake, Turn Signal, Clearance, License Plate Light. Trailer Connector Plug for Towing Vehicle. Emergency Breakaway Safety Cable w/Hook (Automatically Applies Brakes if Trailer Breaks Away From Tow Vehicle). Steel Fenders w/Non-Skid Step Pads. Safety Reflectors. Safety Chains w/Hooks. Rear Jack Stands. Front Jack Stand or Dolly Wheel (See Dimensional Drawings).

*\*12 Volt Recharging Backup Battery Supplied w/Trailer. Requires Electric Brake Control in Tow Vehicle.*

**WARNING!**

Make trailer selection based on the pump unit weight and maximum load capacity of the trailer. The weight of the pump unit and/or any ancillary equipment loaded onto the trailer must not exceed the maximum load capacity of the trailer. Otherwise, an unsafe towing condition will occur, resulting in damage to the trailer and pump unit, and severe injury or death to personnel.

The maximum safe towing speed for the trailer is 55 MPH (88 kph).

**THE GORMAN-RUPP COMPANY • MANSFIELD, OHIO**

GORMAN-RUPP OF CANADA LIMITED • ST. THOMAS, ONTARIO, CANADA

www.grpumps.com

Specifications Subject to Change Without Notice

Printed in U.S.A.

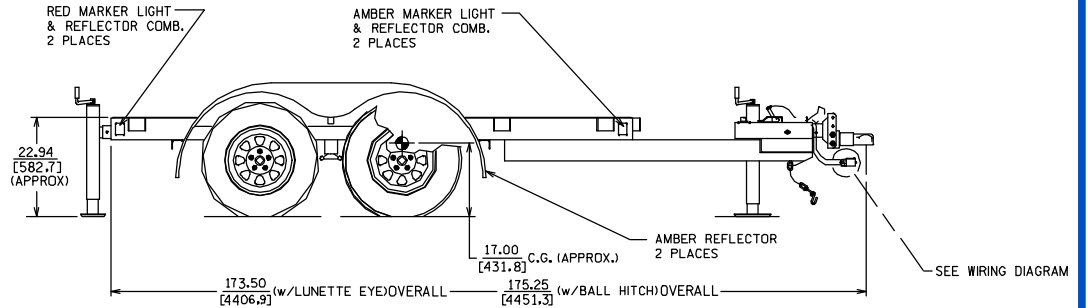
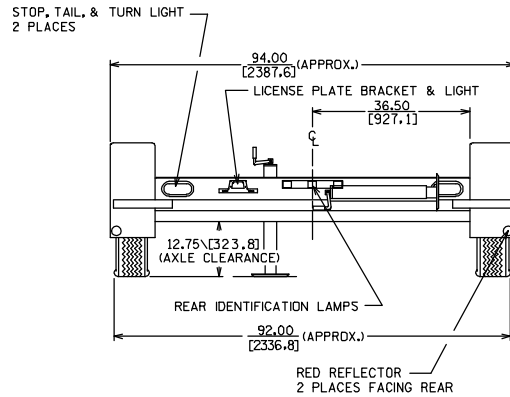
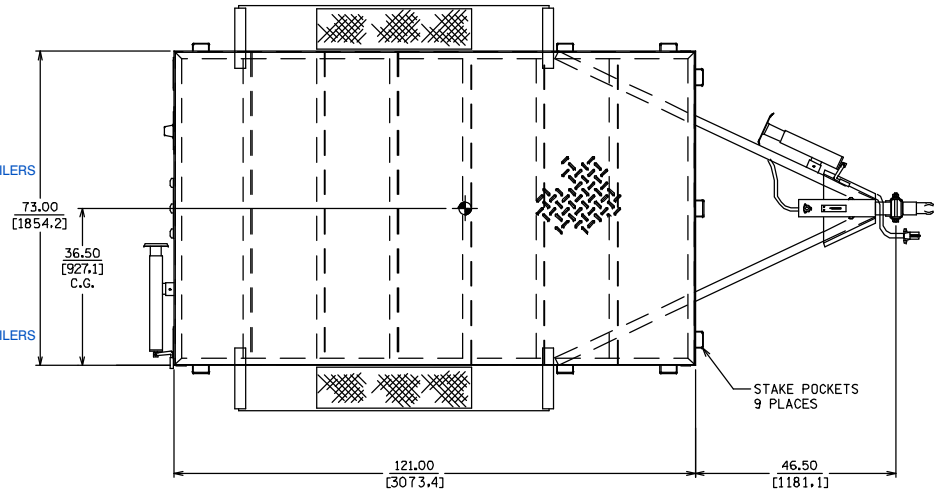
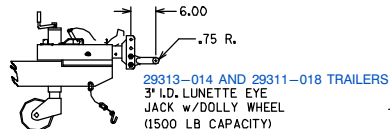
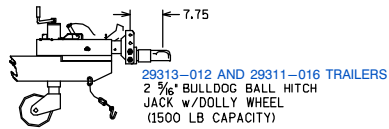
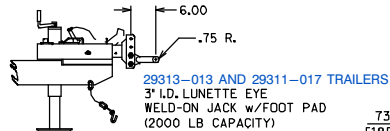
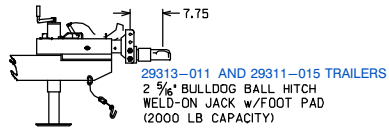
**Specification Data**

**SECTION 10, PAGE 1540**

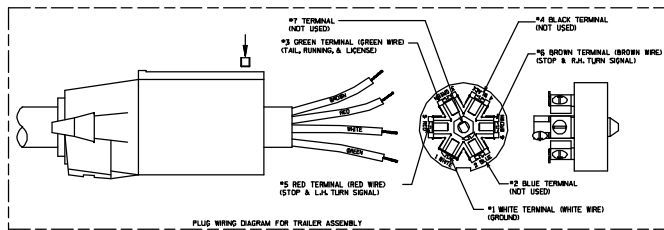
**29313-011 THROUGH 29313-018 TRAILER MODEL DIMENSIONS**

DIMENSIONS AND WEIGHT  
APPROXIMATE

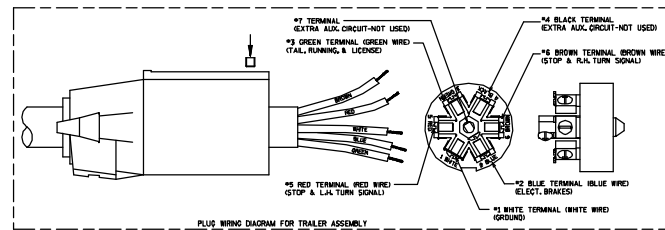
**TRAILER WEIGHT**  
**1355 LB. (615 KG.)**



**SURGE BRAKE WIRING**



**ELECTRIC BRAKE WIRING**



**THE GORMAN-RUPP COMPANY • MANSFIELD, OHIO**

GORMAN-RUPP OF CANADA LIMITED • ST. THOMAS, ONTARIO, CANADA

Specifications Subject to Change Without Notice

Printed in U.S.A.

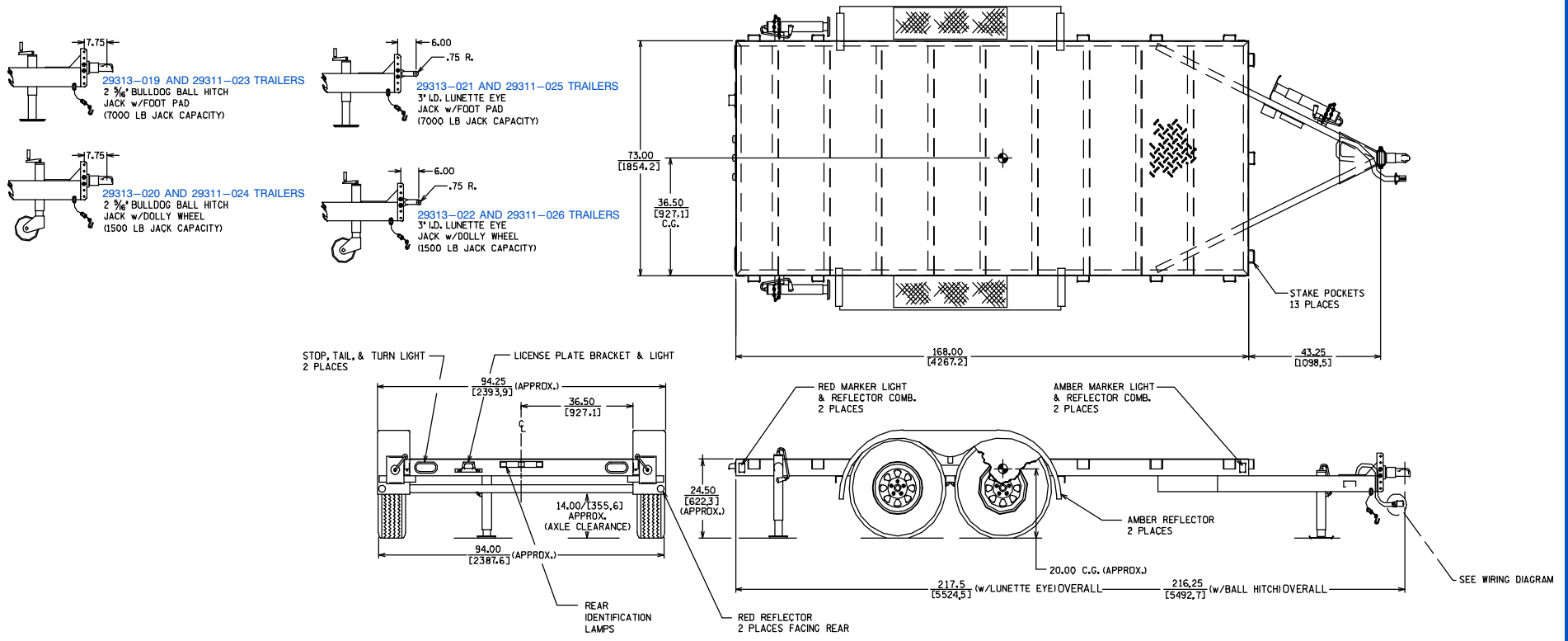
**Specification Data**

**29313-019 THROUGH 29313-026 TRAILER MODEL DIMENSIONS**

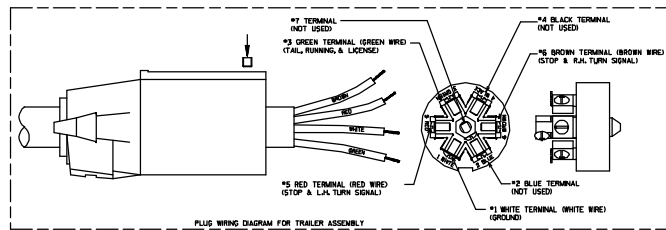
**TRAILER WEIGHT  
1975 LB. (896 KG.)**

**SECTION 10, PAGE 1540**

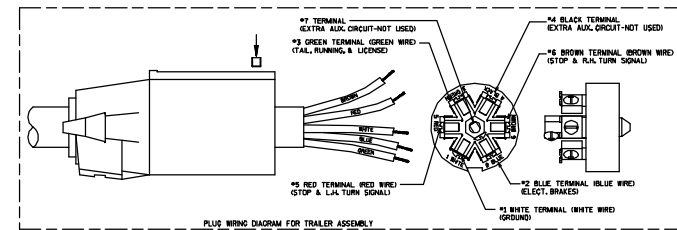
**DIMENSIONS AND WEIGHT  
APPROXIMATE**



**SURGE BRAKE WIRING**



**ELECTRIC BRAKE WIRING**



**THE GORMAN-RUPP COMPANY • MANSFIELD, OHIO**

GORMAN-RUPP OF CANADA LIMITED • ST. THOMAS, ONTARIO, CANADA

Specifications Subject to Change Without Notice

Printed in U.S.A.