

A C D E U

Diesel Engine Driven



# Self Priming Centrifugal Pump

## Models 14C2-F3L and 14C20-F3L

### Size 4" x 4"



35 MT

Total Head		Capacity Of Pump In U.S. Gallons Per Minute (GPM) At Continuous Performance				
P.S.I.	Feet					
50.3	116	110	110	110	110	110
43.4	100	275	350	350	350	350
34.7	80	320	440	530	605	660
26.0	60	322	450	542	625	718
17.3	40	328	453	550	630	722
<b>Suction Lift</b>		<b>25'</b>	<b>20'</b>	<b>15'</b>	<b>10'</b>	<b>5'</b>

**PUMP SPECIFICATIONS**

- Size:** 4" x 4" (102 mm x 102 mm) NPT - Female.
- Casing:** Gray Iron 30.  
Maximum Operating Pressure 81 psi (558 kPa).\*
- Semi-Open, Two Vane Impeller:** Ductile Iron 65-45-12.  
Handles 3" (76,2 mm) Diameter Spherical Solids.
- Impeller Shaft:** Alloy Steel 4150.
- Replaceable Wear Plate:** Carbon Steel M1026.
- Removable Cover Plate:** Gray Iron 30. 22 lbs. (10.0 kg.).
- Intermediate Bracket:** Gray Iron 30.
- Seal Plate:** Gray Iron 30.
- Seal (14C2-F3L):** Double, Grease-Lubricated with Spring-Loaded Grease Cup. Sintered Bronze Stationary Seal Seats. Steel Rotating Faces. Neoprene Packing Rings. Maximum Temperature of Liquid Pumped, 110°F (43°C). Maximum Suction Pressure 10 psi (69 kPa).\*
- Seal (14C20-F3L):** Mechanical, Oil-Lubricated, Double Floating, Self-Aligning. Tungsten Titanium Carbide Rotating and Stationary Faces. Stainless Steel 316 Stationary Seat. Fluorocarbon Elastomers (DuPont Viton® or Equivalent). Stainless Steel 18-8 Cage and Spring. Maximum Temperature of Liquid Pumped is 160°F (71°C).\*
- Seal Liner (14C2-F3L):** Copper Alloy C26000.
- Shaft Sleeve (14C20-F3L):** Alloy Steel 4130.
- Flap Valve:** Neoprene w/Steel Reinforcing.
- Radial/Thrust Bearings:** Open Single Row Ball.
- Bearing Lubrication:** SAE 30 Non-Detergent Oil.
- Suction Flange:** Gray Iron 30.
- Gaskets:** Buna-N, PTFE, Rubber and Vegetable Fiber.
- Hardware:** Standard Plated Steel.
- Oil Level Sight Gage**
- Standard Equipment:** Hoisting Bail. Strainer. Skid Base. 90° Ductile Iron Discharge Elbow.
- Optional Equipment:** Battery.High Speed (55 MPH/89 KM/H) Single Axle Pneumatic-Tired Wheel Kit w/wo DOT-Approved Lights and Electric Brakes. Single Axle Over-the-Road Trailer (Meets DOT Requirements) Available w/Either Electric or Hydraulic Surge Brakes, Running Lights, Jack Stands and Safety Cables.

\*Consult Factory for Applications Exceeding Maximum Pressure and/or Temperature Indicated.



SHOWN WITH OPTIONAL WHEEL KIT

**WARNING!**

Do not use in explosive atmosphere or for pumping volatile flammable liquids.

**ENGINE SPECIFICATIONS**

- Model:** Deutz D914L3.
- Type:** Three Cylinder, Four Cycle, Air Cooled Diesel Engine.
- Displacement:** 197.4 Cu. In. (3,24 Liters).
- Governor:** Mechanical.
- Lubrication:** Forced Circulation.
- Air Cleaner:** Oil Bath.
- Oil Reservoir:** 11.6 U.S. Qts (11 Liters) Dry  
9.5 U.S. Qts (9 Liters) Refill.
- Fuel Tank:** 38.9 U.S. Gallons (147.2 Liters).
- Full Load Operating Time:** 28.4 Hours.
- Starter:** 12 Volt Electric.
- Standard Features:** High Oil Temperature, Low Oil Pressure, V-Belt, Alternator and Start Failure Safety Shut Down Switches/Indicators. Fuel Level Gauge. Throttle Control. Instrument Panel with: Temperature Gauge, Oil Pressure Gauge, Ammeter, Hourmeter, Tachometer, Manual/Stop Key Switch, 15 Amp Fuse. Muffler w/Guard and Weather Cap.

**DEUTZ PUBLISHED PERFORMANCE:**  
Maximum Gross Continuous B.H.P.  
54.9 (41 kW) @ 2300 RPM



THE GORMAN-RUPP COMPANY • MANSFIELD, OHIO

GORMAN-RUPP OF CANADA LIMITED • ST. THOMAS, ONTARIO, CANADA

www.grpumps.com

Specifications Subject to Change Without Notice

Printed in U.S.A.

**Specification Data**

APPROXIMATE DIMENSIONS and WEIGHTS

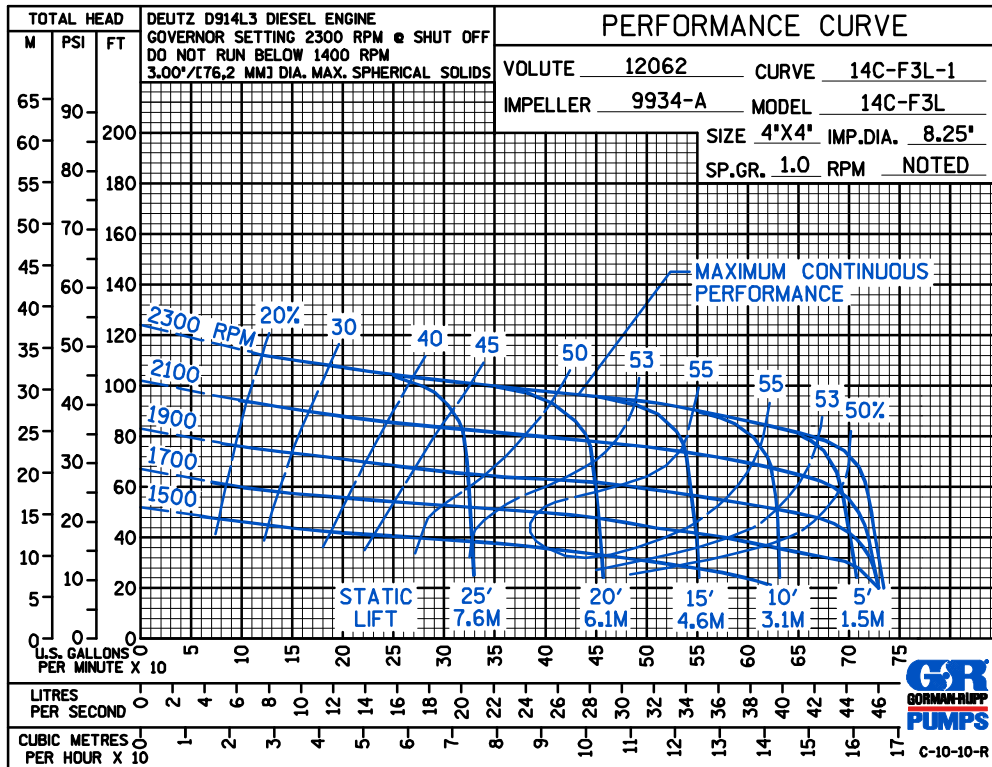
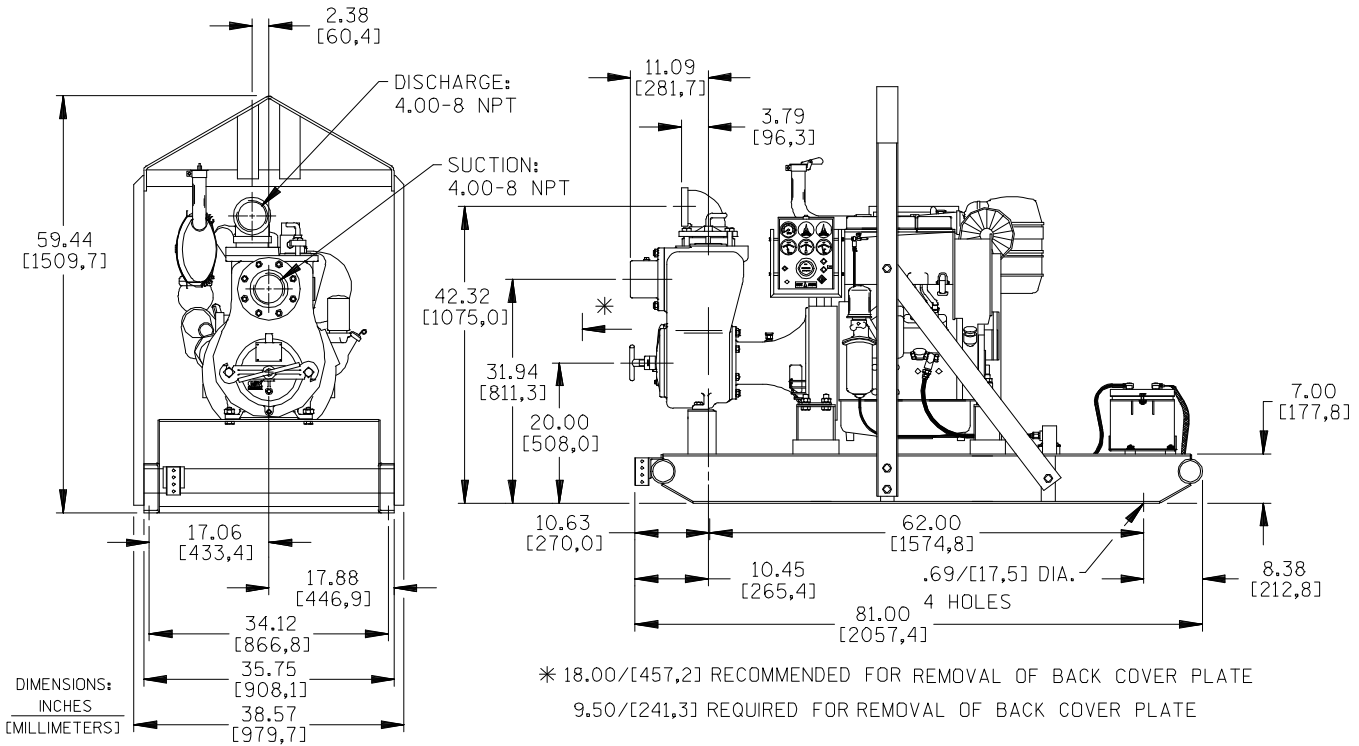
**SKID BASE**

**2-WHEEL**

**NET WEIGHT:** 1740 LBS. [789 KG.]  
**SHIPPING WEIGHTS:** 1840 LBS. [834 KG.]  
**EXPORT CRATE:** 139 CU. FT. [3.9 CU. M.]

1970 LBS. [894 KG.]  
 1970 LBS. [894 KG.]

SECTION 45, PAGE 1230



THE GORMAN-RUPP COMPANY • MANSFIELD, OHIO

GORMAN-RUPP OF CANADA LIMITED • ST. THOMAS, ONTARIO, CANADA

Specifications Subject to Change Without Notice

Printed in U.S.A.