

**Diesel Engine Driven/Sound Attenuated
Priming Assisted Centrifugal
Environmental Silent Pump w/Autostart**

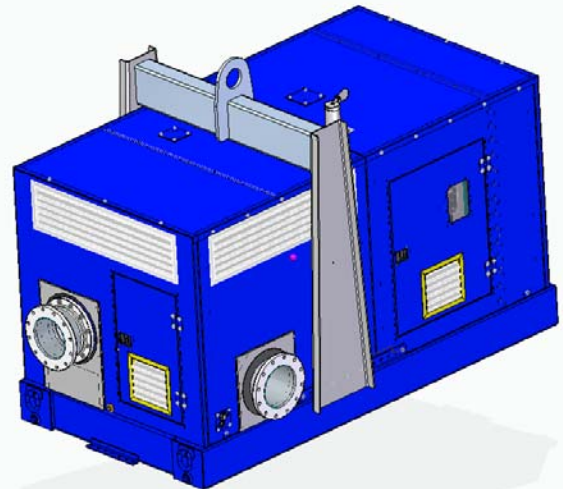


Model PA12A60-B-4045H FT4-ESP

Size 12" x 12"



Total Head		Capacity of Pump in U.S. Gallons per Minute (GPM) at Continuous Performance				
P.S.I.	Feet					
45.1	104	1100	1100	1100	1100	1100
43.4	100	2000	2300	2300	2300	2300
39.0	90	2700	3620	3750	3750	3750
34.7	80	3010	4120	4650	4700	4700
30.4	70	3090	4250	5050	5200	5430
26.0	60	3150	4300	5100	5710	5900
22.7	50	3200	4350	5150	5810	6040
17.3	40	3290	4400	5200	5900	6100
13.0	30	3340	4450	5250	5910	6190
Suction Lift		25'	20'	15'	10'	5'



PUMP SPECIFICATIONS

Size: 12" x 12" (305 mm x 305 mm) Flanged.
Casing: Gray Iron 30. Maximum Operating Pressure 71 psi (490 kPa). *
Enclosed Type, Three Vane Impeller: Ductile Iron 60-40-18.
 Handles 3" (76.2 mm) Diameter Spherical Solids.
Impeller Shaft: Stainless Steel 17-4 PH.
Shaft Sleeve: Stainless Steel 304.
Replaceable Wear Rings: Impeller - Ductile Iron 80-60-03.
 Suction Head - Copper Alloy C93200.

Seal Plate: Gray Iron 30.
Bearing Housing: Gray Iron 30.
Seal: Mechanical, Oil-Lubricated, Double Floating, Self-Aligning. Silicon Carbide Rotating and Stationary Faces. Stainless Steel 316 Stationary Seat. Fluorocarbon Elastomers (DuPont Viton® or Equivalent). Stainless Steel 18-8 Cage and Spring.
 Maximum Temperature of Liquid Pumped 160°F (71°C). *
Priming Chamber: Gray Iron 30 Housing w/Stainless Steel Float and Linkage.
Discharge Check Valve: Ductile Iron Housing w/Buna-N Flapper.
Radial Bearing: Open Single Row Roller.
Thrust Bearings: Open Single Row Ball.
Bearing and Seal Cavity Lubrication: SAE 30 Non-Detergent Oil.
Flanges: Gray Iron 30.
Gaskets: Vegetable Fiber, Buna-N, Resistant Synthetic Rubber and Cork.
O-Rings: Buna-N and Neoprene.
Hardware: Standard Plated Steel.
Bearing and Seal Cavity Oil Level Sight Gauges.

*Consult Factory for Applications Exceeding Maximum Pressure and/or Temperature Indicated.

Standard Equipment: Gear-Driven Air Compressor. Hoisting Bail. Sound-proof (EPA Average (not available) dBA at 23 feet [7 meters] Under Load) Lightweight Aluminum Enclosure - Removable for Maintenance of Pump or Engine - w/Lockable Door Panels. [Single Ball Type Float Switch](#). Combination Skid Base w/Fuel Tank. [Full Feature Control Panel](#). **

Optional Equipment: Strainer. Battery. GR Hard Iron Impeller and Seal Plate. Heated Priming Chamber Kit. NPT Suction and Discharge Flange Kits. Liquid Level Transducer.

**50 Ft. (15 m) Standard Length; Dual Switches and Alternate Cable Lengths Available From the Factory.



ENGINE SPECIFICATIONS

Model: John Deere 4045HFC06.
EPA Tier: Tier 4.
Type: Turbocharged Four Cylinder, Diesel Engine with Air Compressor.
Displacement: 276 Cu. In. (4,5 Liters).
Lubrication: Forced Circulation.
Air Cleaner: Dry Type.
Fuel Tank: 206 U.S. Gals. (778 Liters).
Full Load Operating Time: 25.5 Hrs.
Starter: 12V Electric.
Standard Features: Muffler with Guard and Weather Cap. DOC/SCR Exhaust After Treatment System.
Engine Control Features: Padlockable Box with Throttle Control, Tachometer, Coolant Temperature, Oil Pressure, Voltage and Overstart Indicators/Shutdowns. Manual/Stop/Auto Keyswitch. Audible Startup Warning Delay. Fuel Level Display/Alarm/Shutdown.

JOHN DEERE PUBLISHED PERFORMANCE:
 Maximum Gross BHP (Industrial/Heavy Duty)
 156 (116 kW) @ 2200 RPM



GORMAN-RUPP PUMPS

www.grpumps.com

Specifications Subject to Change Without Notice

Printed in U.S.A.

Specification Data

SECTION 42, PAGE 1805

APPROXIMATE
DIMENSIONS and WEIGHTS

NET WEIGHT:

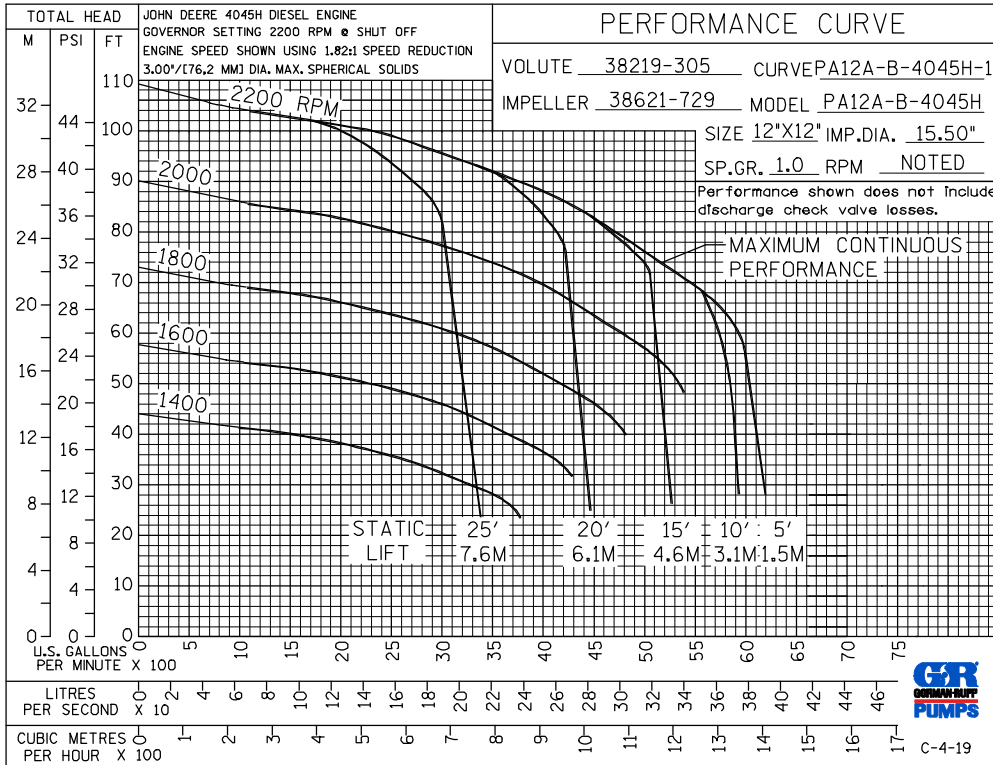
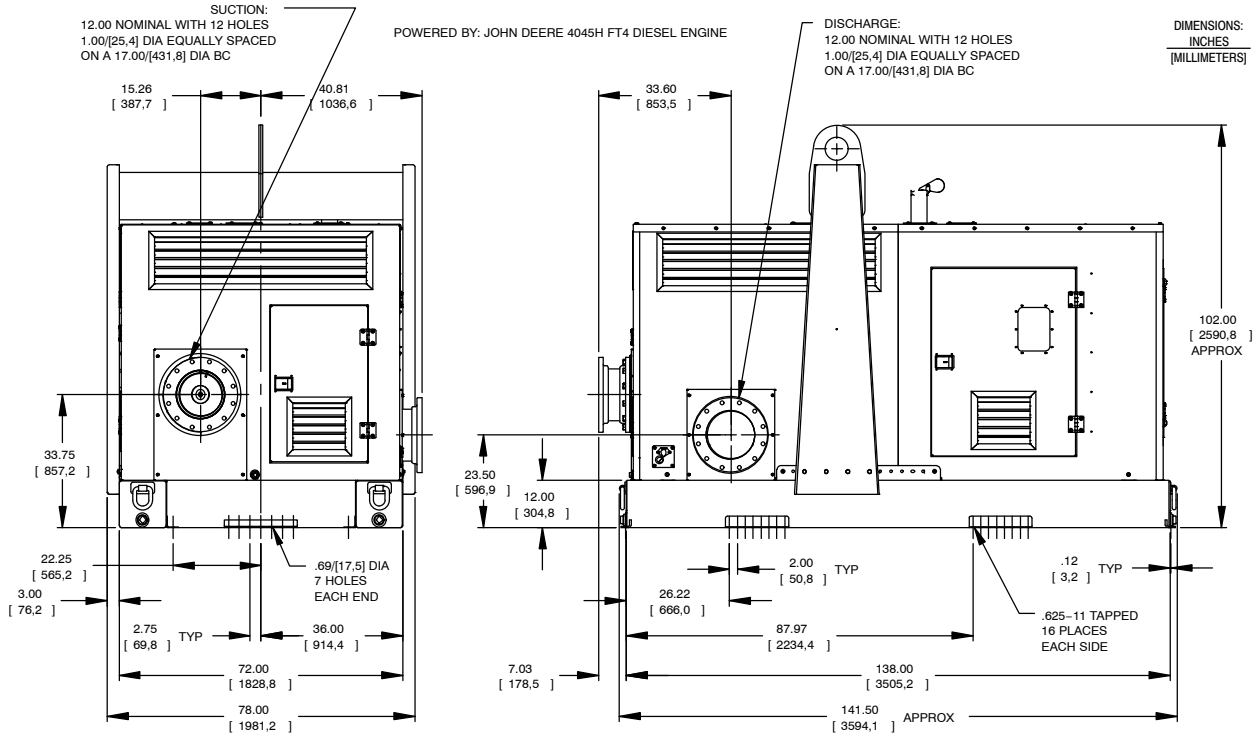
8850 LBS. (4014 KG.)

SHIPPING WEIGHT:

9000 LBS. (4082 KG.)

EXPORT CRATE SIZE:

734 CU. FT. (20,8 CU. M.)



GORMAN-RUPP PUMPS

www.grpumps.com

Specifications Subject to Change Without Notice

Printed in U.S.A.