

## Basic

## Standard Centrifugal Pump



## Model 63D31-B

## Size 4" x 3"

## PUMP SPECIFICATIONS

**Size:** 4" x 3" (102 mm x 76 mm) Flanged.

**Casing:** Ductile Iron 65-45-12.

Maximum Operating Pressure 90 psi (621 kPa).\*

**Enclosed Type, Five Vane Impeller:** Aluminum Alloy 356-T6.  
Handles 3/8" (9,5 mm) Diameter Spherical Solids.

**Impeller Shaft:** Carbon Steel 1045.

**Bearing Housing:** Ductile Iron 65-45-12.

**Bearing Housing Lubrication:** Grease.

**Body Cover:** Ductile Iron 65-45-12.

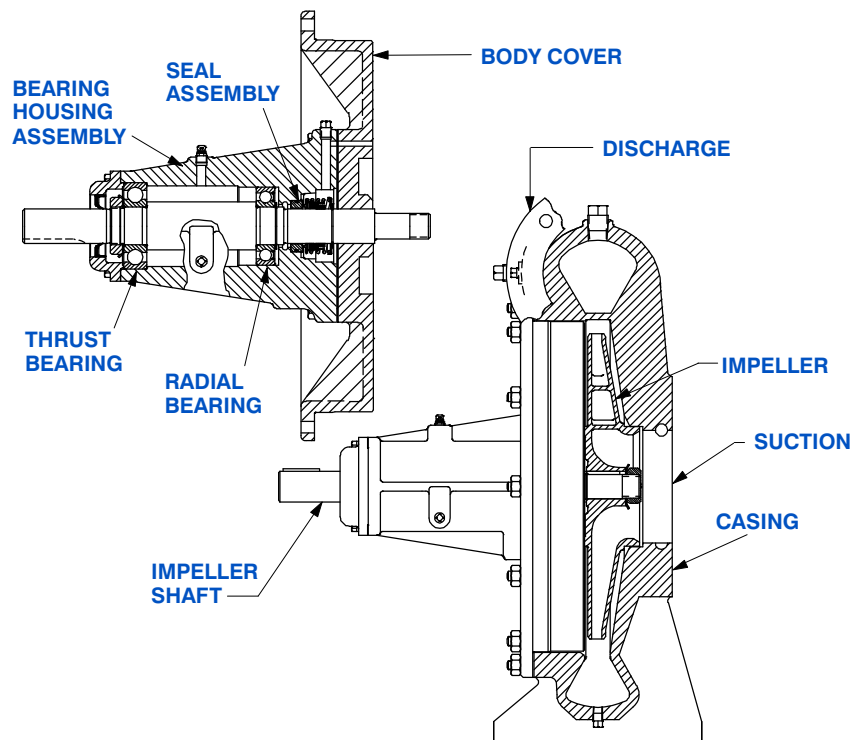
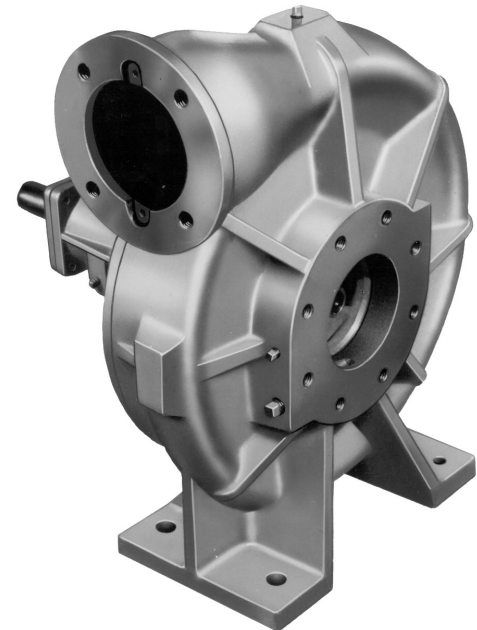
**Radial and Thrust Bearings:** Sealed Single Row Ball.

**Gaskets:** Vegetable Fiber and Cork.

**Hardware:** Standard Plated Steel.

**Optional Equipment:** 150# Steel 4" NPT Suction and 3" NPT Discharge Flange Kit. Copper Alloy C93400 Impeller. PTFE Seal with Fluorocarbon O-Ring. PTFE Seal with Buna-N O-Ring.

*\*Consult Factory for Applications Exceeding Maximum Pressure and/or Temperature Indicated.*



## SEAL DETAIL

Type 2, Mechanical Self-Lubricated. Carbon Rotating Face. Ni-Resist Stationary Face. Fluorocarbon Elastomers (DuPont Viton® or Equivalent). Stainless Steel 18-8 Cage and Spring. Maximum Temperature of Liquid Pumped, 160°F [71°C].\*



GORMAN-RUPP PUMPS

www.grpumps.com

Specifications Subject to Change Without Notice

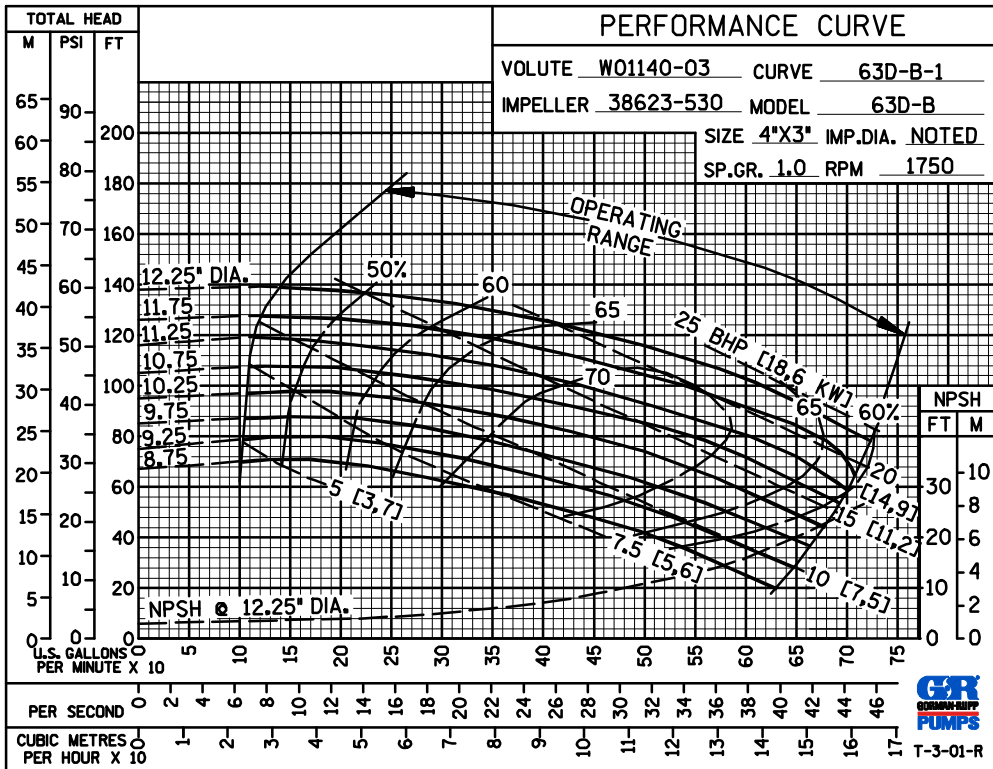
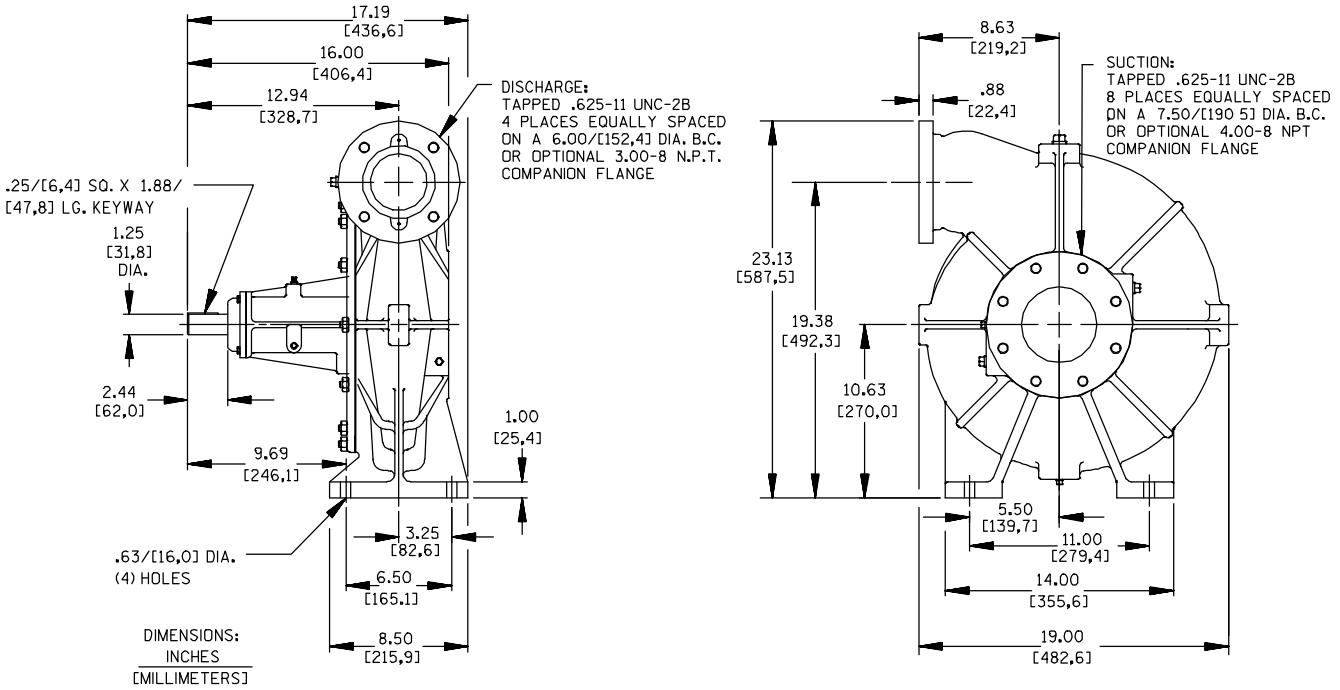
Printed in U.S.A.

**Specification Data**

SECTION 70, PAGE 450

APPROXIMATE  
DIMENSIONS and WEIGHTS

**NET WEIGHT: 218 LBS. (98,9 KG.)**  
**SHIPPING WEIGHT: 233 LBS. (105,7 KG.)**  
**EXPORT CRATE: 11.9 CU. FT. (0,33 CU. M.)**



**GORMAN-RUPP PUMPS**

www.grpumps.com

Specifications Subject to Change Without Notice

Printed in U.S.A.