



Basic Pedestal Standard Centrifugal Pump

Models 63E31-B and 63E32-B

Size 4" x 3"

PUMP SPECIFICATIONS

Size: 4" x 3" (102 mm x 76 mm) Flanged.

Casing: (63E31-B) Ductile Iron 65-45-12.

(63E32-B) Cast Steel 70-36.

Maximum Operating Pressure 179 psi (1234 kPa).*

Enclosed Type, Five Vane Impeller: Alum Alloy SG70A-T6.

Handles 3/8" (9,5 mm) Diameter Spherical Solids.

Impeller Shaft: Carbon Steel 1045.

Bearing Housing: Ductile Iron 65-45-12.

Bearing Housing Lubrication: Grease.

Body Cover: (63E31-B) Ductile Iron 65-45-12.

(63E32-B) Cast Steel 70-36.

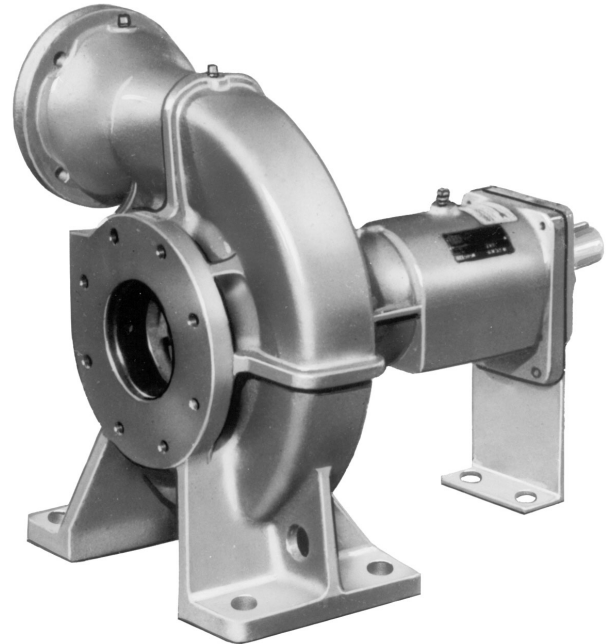
Radial and Thrust Bearings: Sealed Single Row Ball.

Gaskets: Vegetable Fiber and Cork.

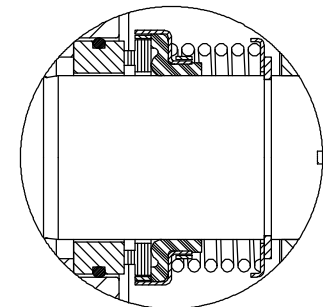
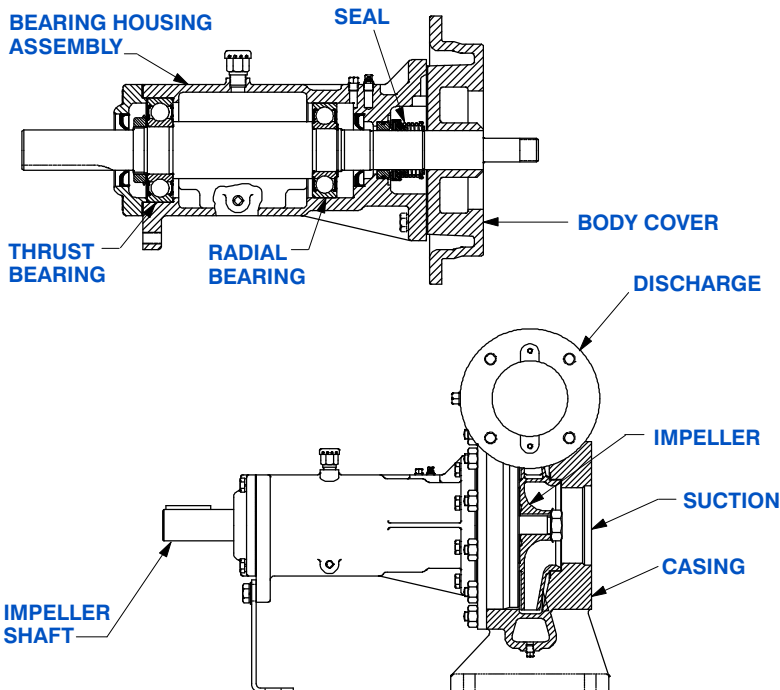
Hardware: Standard Plated Steel.

Optional Equipment: 150# Steel 4" NPT Suction and 3" NPT Discharge Flange Kit. Copper Alloy C93400 Impeller. PTFE Seal.

**Consult Factory for Applications Exceeding Maximum Pressure and/or Temperature Indicated.*



MODEL 63E31-B SHOWN



SEAL DETAIL

Type 21, Mechanical Self-Lubricated. Carbon Rotating Face. Ni-Resist Stationary Face. Fluorocarbon Elastomers (DuPont Viton® or Equivalent). Stainless Steel 18-8 Cage and Spring. Maximum Temperature of Liquid Pumped, 160°F [71°C].*



GORMAN-RUPP PUMPS

www.grpumps.com

Specifications Subject to Change Without Notice

Printed in U.S.A.

Specification Data

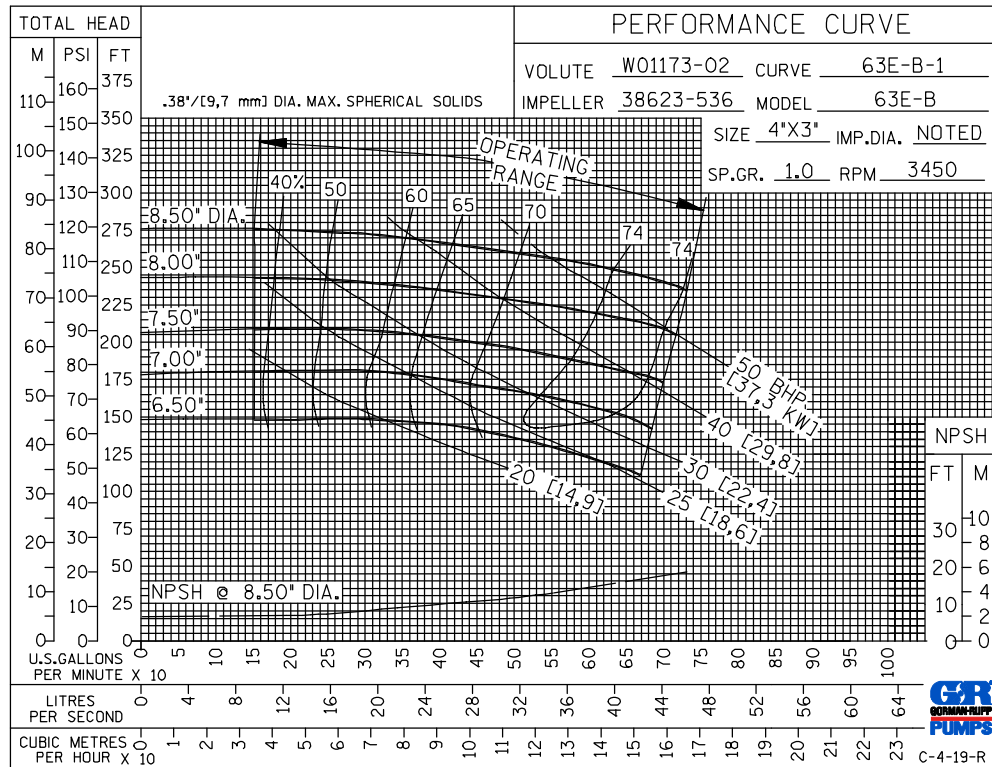
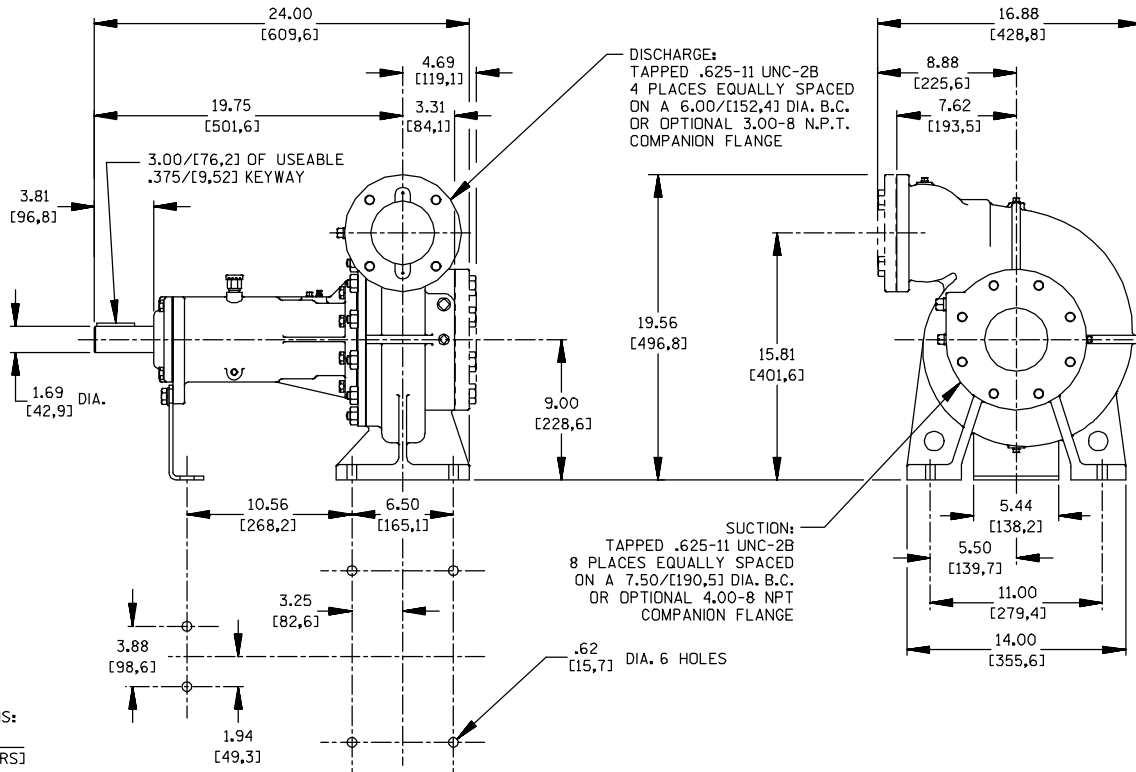
SECTION 70, PAGE 475

APPROXIMATE DIMENSIONS and WEIGHTS

NET WEIGHT:
SHIPPING WEIGHT:
EXPORT CRATE:

63E31-B
213 LBS. (96,6 KG.)
236 LBS. (107 KG.)
12.8 CU. FT. (0,36 CU. M.)

63E32-B
255 LBS. (115,7 KG.)
270 LBS. (122,5 KG.)
12.8 CU. FT. (0,36 CU. M.)



**60 HERTZ
PERFORMANCE
BASED ON
WATER
TRIMMED
IMPELLER**



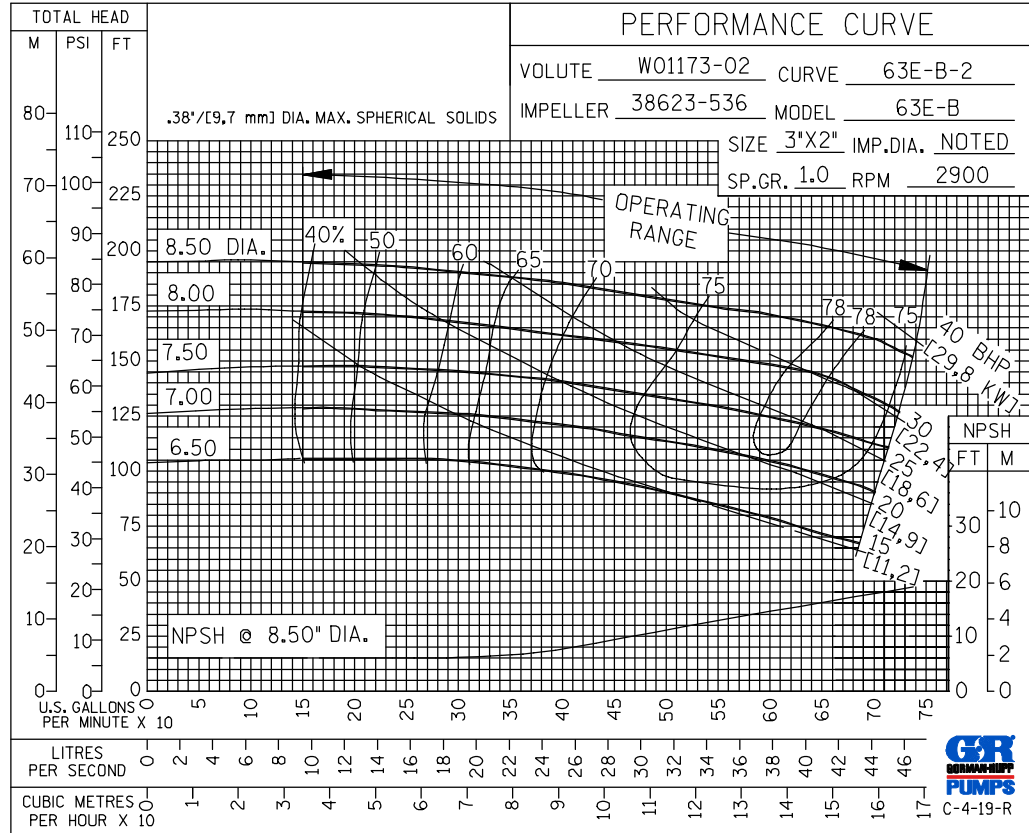
GORMAN-RUPP PUMPS

www.grpumps.com

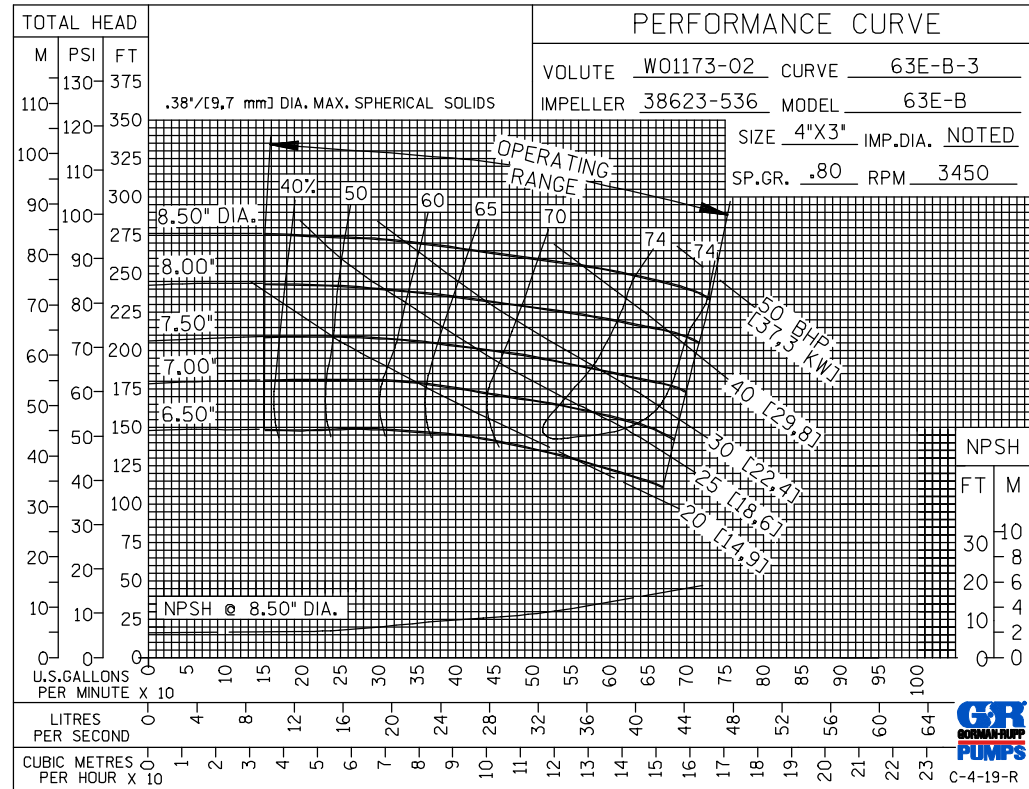
Specifications Subject to Change Without Notice

Printed in U.S.A.

**50 HERTZ
PERFORMANCE
BASED ON
WATER
TRIMMED
IMPELLER**



**60 HERTZ
PERFORMANCE
BASED ON
PETROLEUM
TRIMMED
IMPELLER**



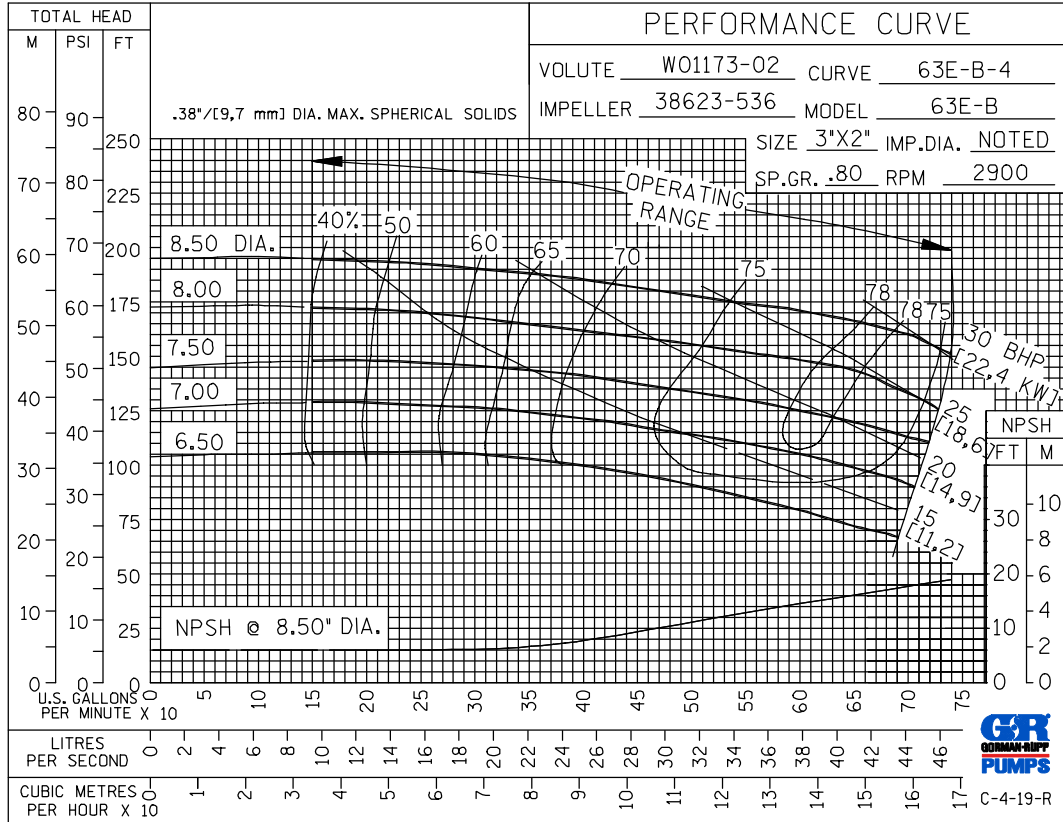
GORMAN-RUPP PUMPS

www.grpumps.com

Specifications Subject to Change Without Notice

Printed in U.S.A.

**50 HERTZ
PERFORMANCE
BASED ON
PETROLEUM
TRIMMED
IMPELLER**



GORMAN-RUPP PUMPS

www.grpumps.com

Specifications Subject to Change Without Notice

Printed in U.S.A.