



Standard Centrifugal Pump

Model 54J2-B

Size 5" x 4"

PUMP SPECIFICATIONS

Size: 5" x 4" (127 x 101 mm) Flanged.

Casing: Gray Iron 35.

Maximum Casing Pressure 276 psi (1903 kPa).*

Maximum Operating Pressure 250 psi (1723 kPa) at Temperatures up to 100°F (37°C) Based on System Component Limitations.*

Enclosed Type, Six Vane Impeller: Gray Iron 30.

Handles 1/2" (12,7 mm) Diameter Spherical Solids.

Impeller Shaft: Alloy Steel 4150.

Replaceable Wear Ring: Gray Iron 30.

Pedestal: Gray Iron 30.

Seal Housing: Copper Alloy C90500.

Radial Bearing: Open Single Row Ball.

Thrust Bearing: Open Double Row Ball.

Bearing Lubrication: SAE 30 Non-Detergent Oil.

Cover Plate: Gray Iron 30.

Gaskets: Vegetable Fiber.

Hardware: Standard Plated Steel.

Oil Level Sight Gauge.

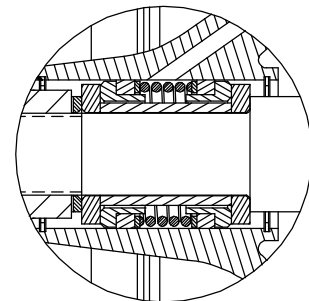
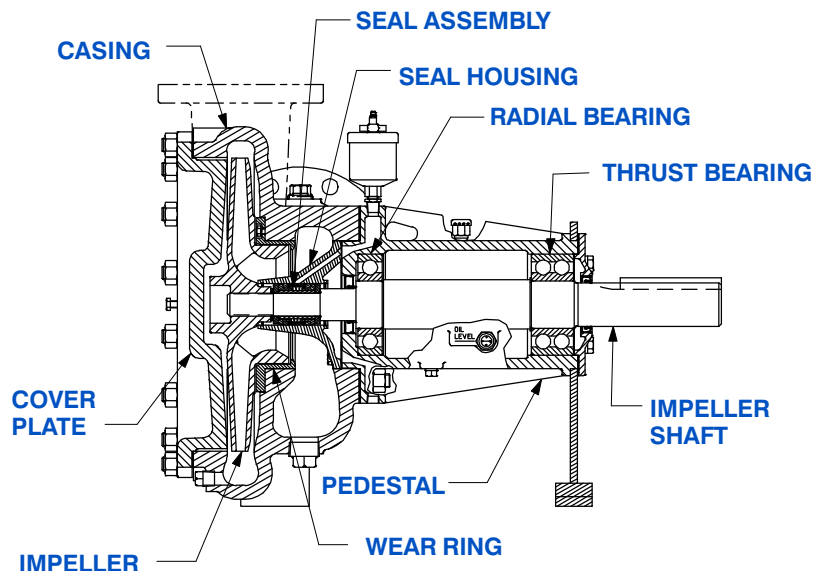
Strainer.



Optional Equipment: 5" NPT Suction Flange.

4" NPT Discharge Flange. Hand Primer.

*Consult Factory for Applications Exceeding Maximum Pressure and/or Temperature Indicated.



SEAL DETAILS

Double, Grease Lubricated with Spring-Loaded Grease Cup. Sintered Bronze Stationary Seal Seats. Steel Rotating Faces. Neoprene Packing Rings. Maximum Temperature of Liquid Pumped, 110°F (43°C). Maximum Suction Pressure 10 psi (69 kPa).*



GORMAN-RUPP PUMPS

www.grpumps.com

Specifications Subject to Change Without Notice

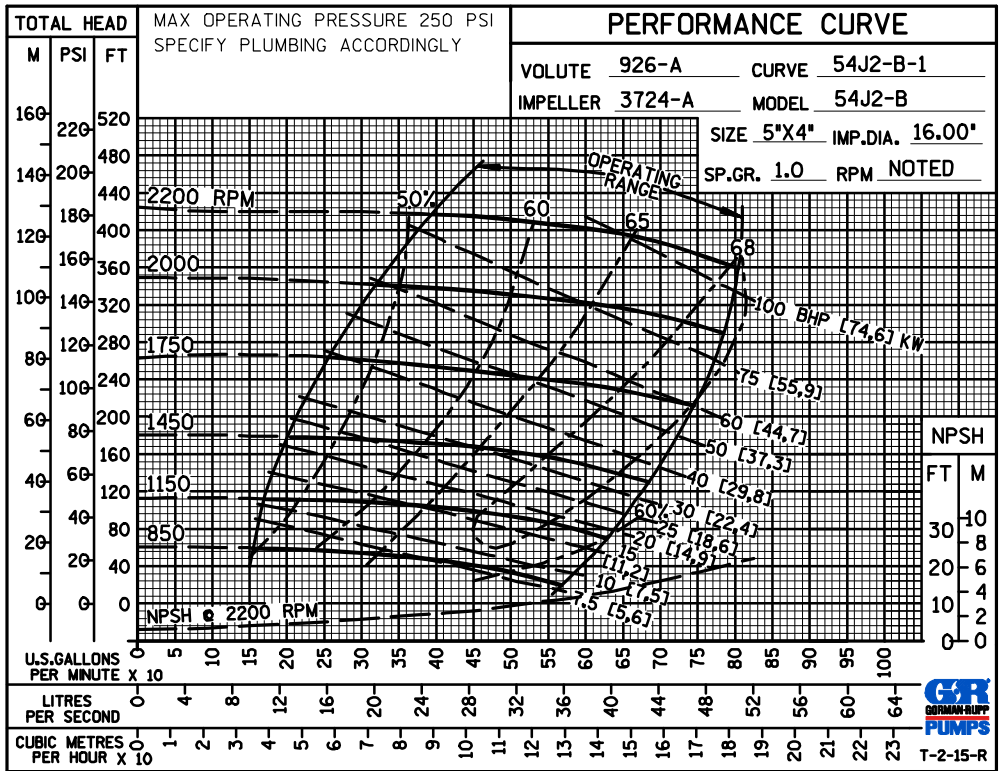
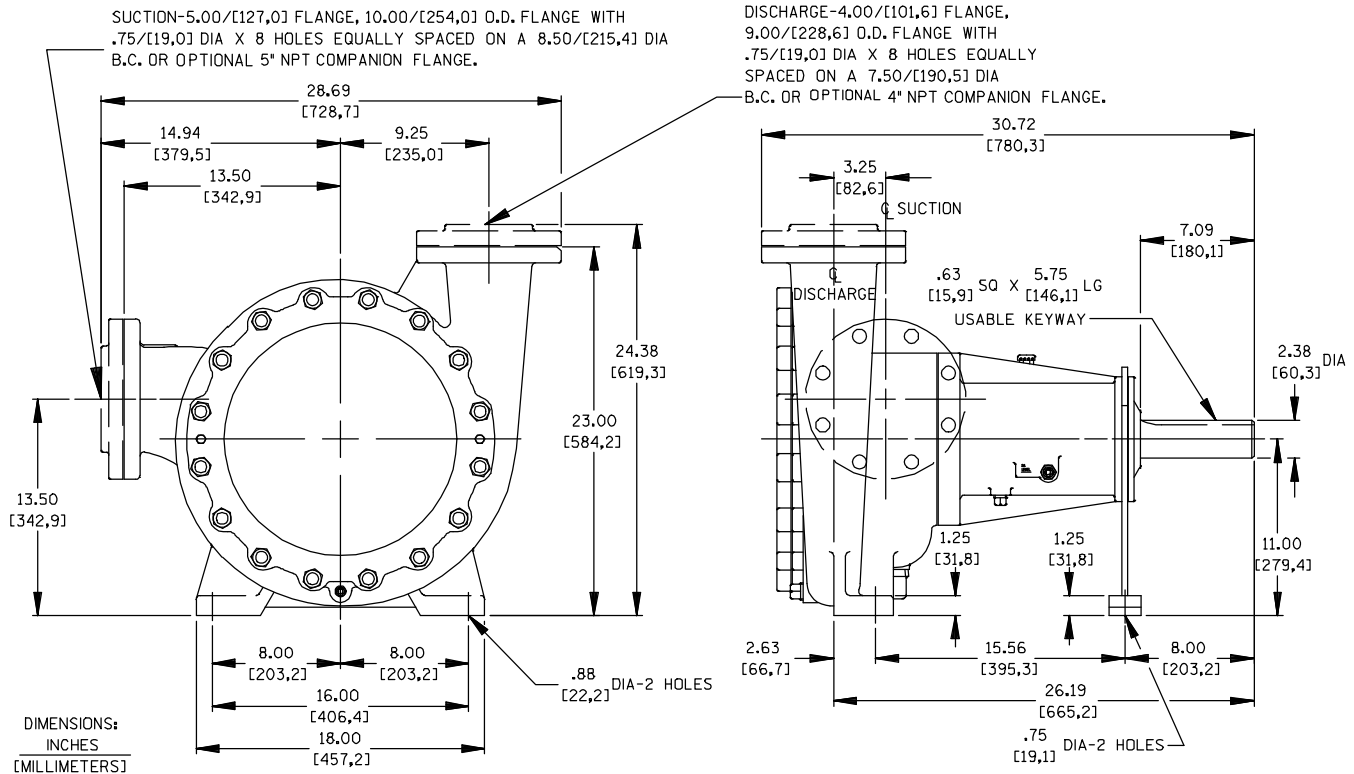
Printed in U.S.A.

Specification Data

SECTION 70, PAGE 800

APPROXIMATE
DIMENSIONS and WEIGHTS

NET WEIGHT: 570 LBS. (258,5 KG.)
SHIPPING WEIGHT: 620 LBS. (281,2 KG.)
EXPORT CRATE: 23.7 CU. FT. (0,67 CU. M.)



GORMAN-RUPP PUMPS

www.grpumps.com

Specifications Subject to Change Without Notice

Printed in U.S.A.