

Standard Centrifugal Pump



Model 64K31-B

Size 6" x 4"

PUMP SPECIFICATIONS

Size: 6" x 4" (152 mm x 102 mm) Flanged.

Casing: Ductile Iron 65-45-12.

Maximum Casing Pressure 260 psi (1793 kPa).*

Maximum Operating Pressure 250 psi (1723 kPa) at Temperatures up to 100°F (37°C) Based on System Component Limitations.*

Enclosed Type, Five Vane Impeller: Aluminum Alloy 356-T6.

Handles 1/2" (12,7 mm) Diameter Spherical Solids.

Impeller Shaft: Carbon Steel 1045.

Bearing Housing: Ductile Iron 65-45-12.

Radial Bearing: Open Double Row Ball.

Thrust Bearing: Open Single Row Ball.

Bearing Lubrication: SAE 30 Non-Detergent Oil.

Body Cover: Ductile Iron 65-45-12.

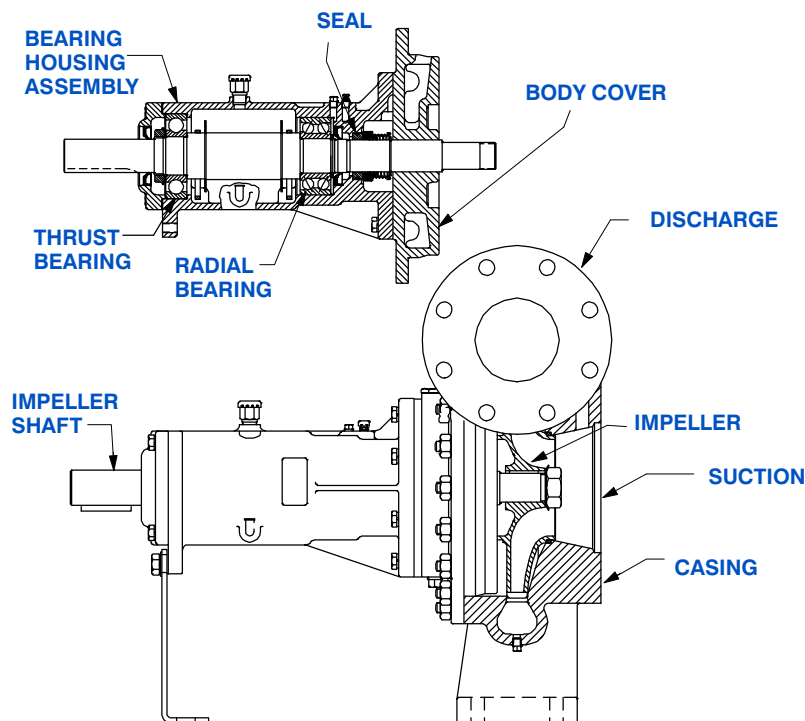
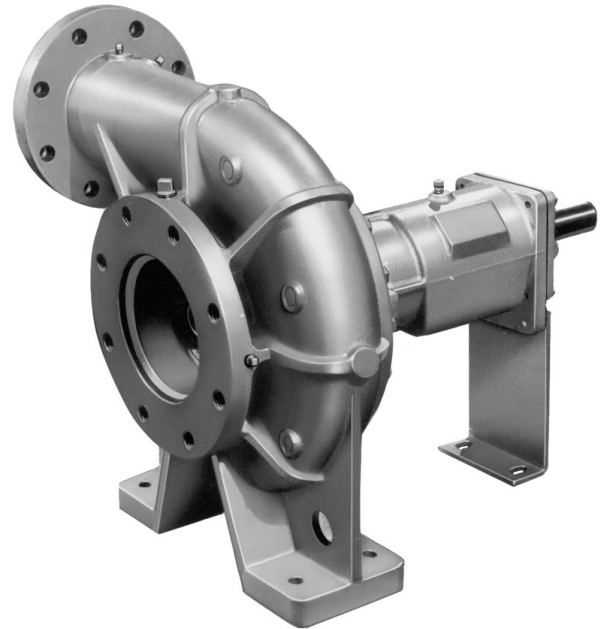
Gaskets: Vegetable Fiber and Cork.

Hardware: Standard Plated Steel.

Optional Equipment: PTFE Seal with Fluorocarbon O-Ring.

PTFE Seal with Buna-N O-Ring.

**Consult Factory for Applications Exceeding Maximum Pressure and/or Temperature Indicated.*



SEAL DETAIL

Type 21, Mechanical Self-Lubricated. Carbon Rotating Face. Ni-Resist Stationary Face. Fluorocarbon Elastomers (DuPont Viton® or Equivalent). Stainless Steel 18-8 Cage and Spring. Maximum Temperature of Liquid Pumped, 160°F (71°C).*



GORMAN-RUPP PUMPS

www.grpumps.com

Specifications Subject to Change Without Notice

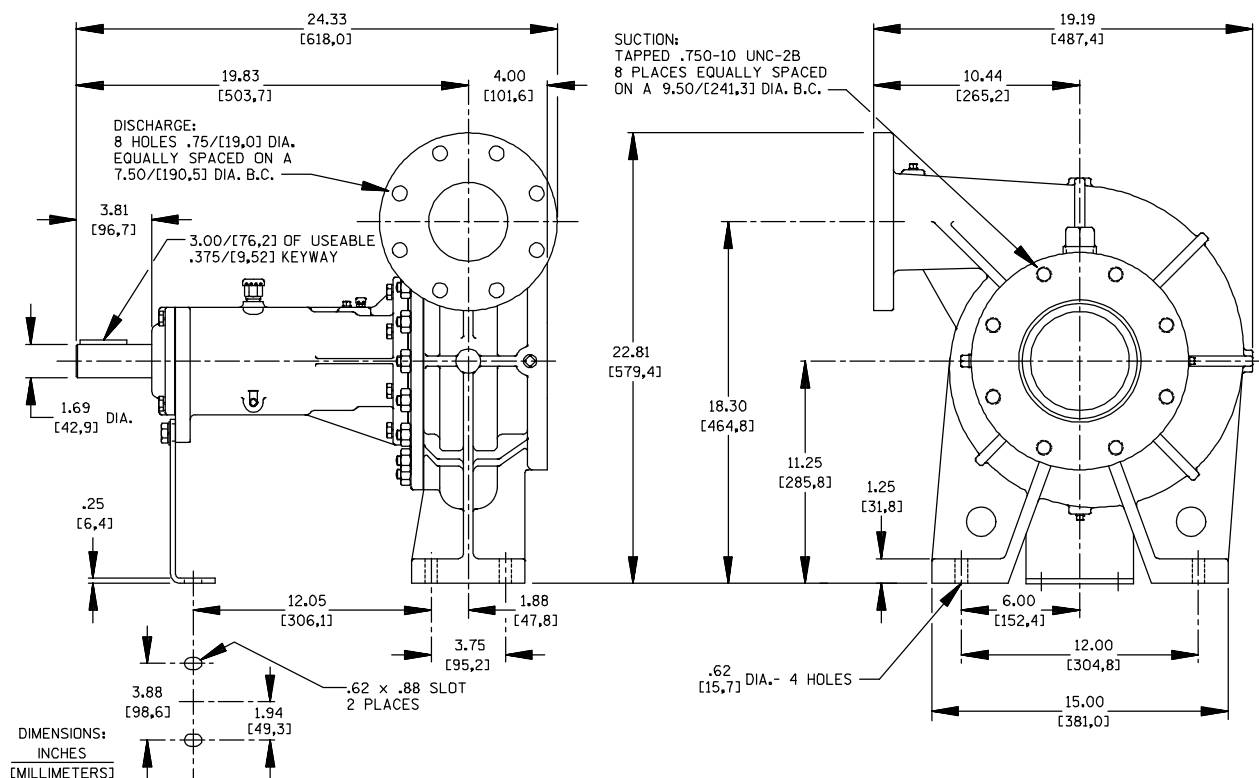
Printed in U.S.A.

Specification Data

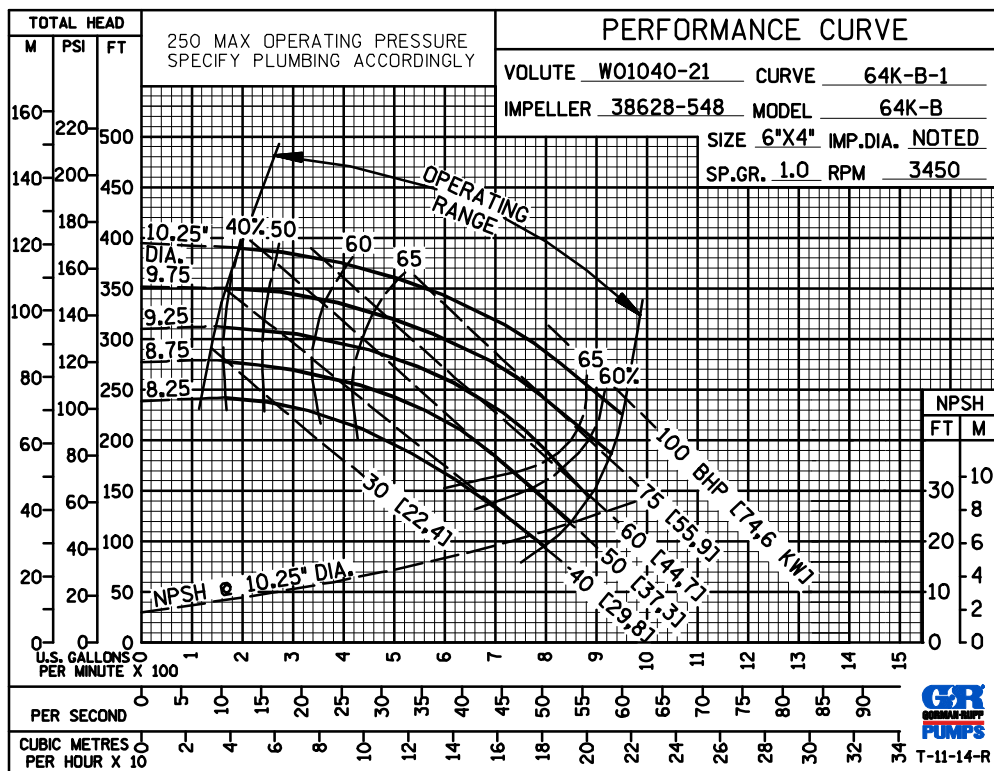
SECTION 70, PAGE 875

APPROXIMATE
DIMENSIONS and WEIGHTS

NET WEIGHT: 298 LBS. (135,2 KG.)
SHIPPING WEIGHT: 313 LBS. (142,0 KG.)
EXPORT CRATE: 14.6 CU. FT. (0,41 CU. M.)



**60 HERTZ
PERFORMANCE
BASED ON
WATER
TRIMMED
IMPELLER**



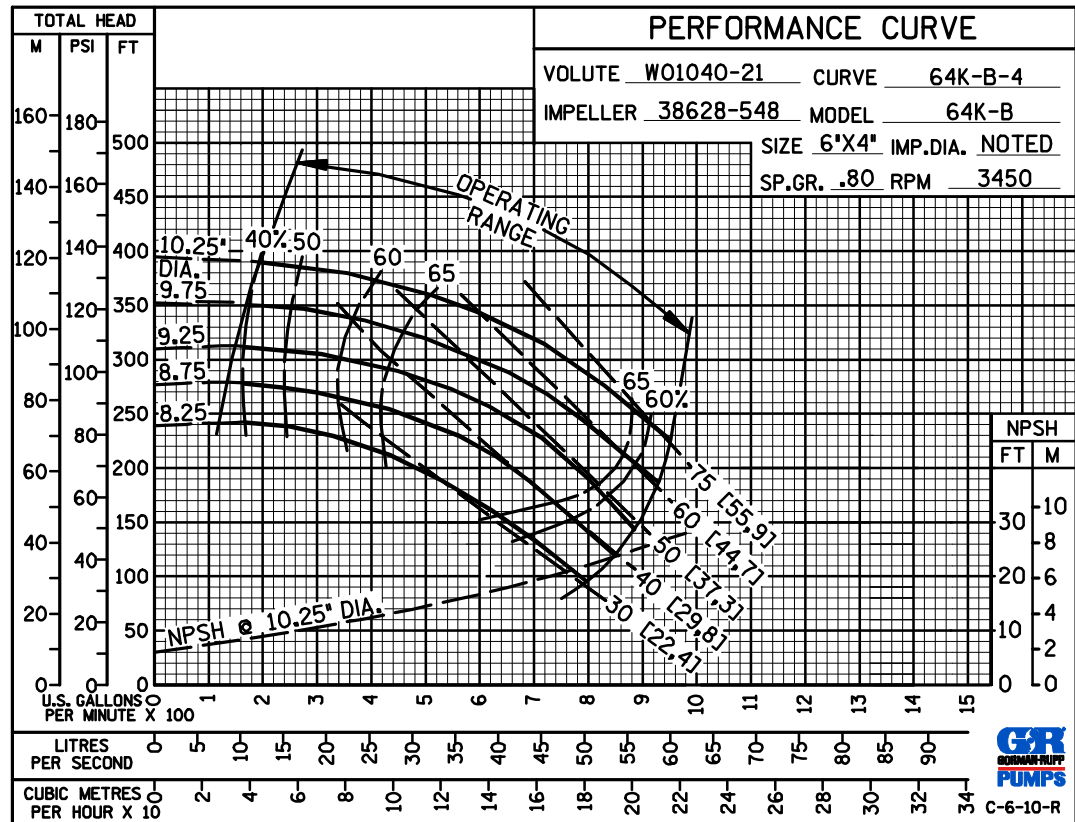
GORMAN-RUPP PUMPS

www.grpumps.com

Specifications Subject to Change Without Notice

Printed in U.S.A.

60 HERTZ
PERFORMANCE
BASED ON
PETROLEUM
TRIMMED
IMPELLER



GORMAN-RUPP PUMPS

www.grpumps.com

Specifications Subject to Change Without Notice

Printed in U.S.A.