

Basic Pedestal



Standard Centrifugal Pump

Models 65A31-B and 65A32-B

Size 6" x 5"

PUMP SPECIFICATIONS**Size:** 6" x 5" (152 mm x 127 mm) Flanged.**Casing:** (65A31-B) Ductile Iron 65-45-12.

(65A32-B) Cast Steel 70-36.

Maximum Operating Pressure 98 psi (676 kPa).*

Enclosed Type, Five Vane Impeller: Aluminum Alloy 356-T6.

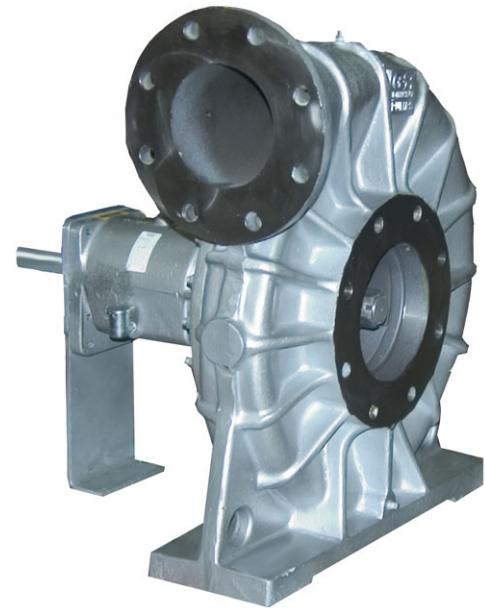
Handles 1/2" (12,7 mm) Diameter Spherical Solids.

Impeller Shaft: Carbon Steel 1045.**Bearing Housing:** Ductile Iron 65-45-12.**Radial Bearing:** Open Double Row Ball.**Thrust Bearing:** Open Single Row Ball.**Bearing Lubrication:** SAE 30 Non-Detergent Oil.**Body Cover:** (65A31-B) Ductile Iron 65-45-12.

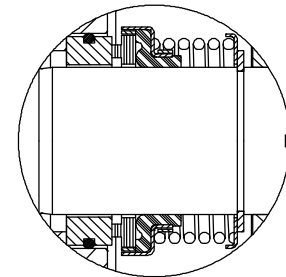
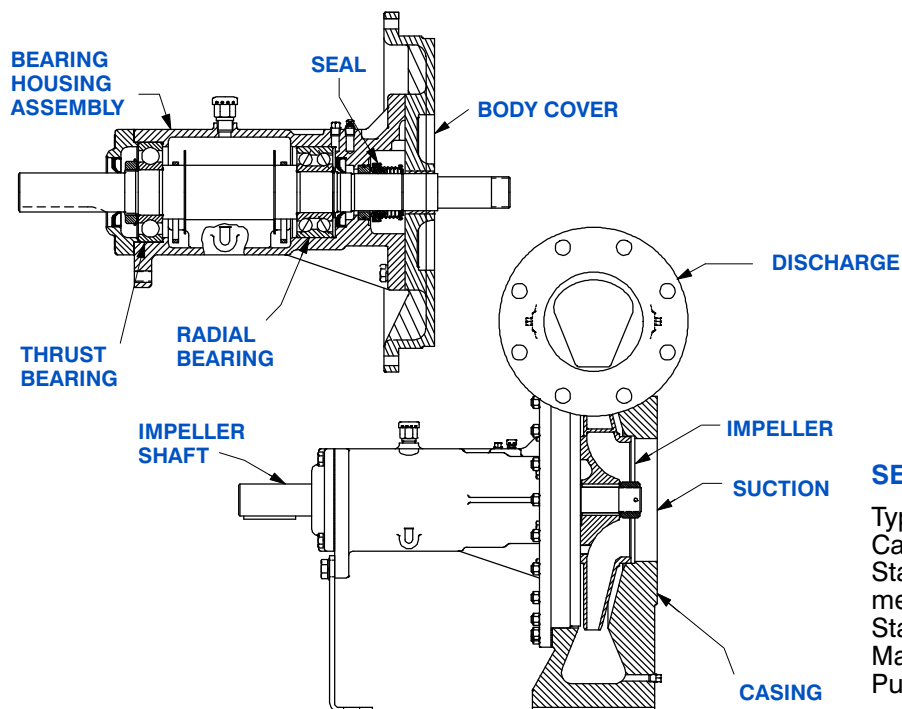
(65A32-B) Cast Steel 70-36.

Gaskets: Vegetable Fiber and Cork.**Hardware:** Standard Plated Steel.**Optional Equipment:** PTFE Seal.

**Consult Factory for Applications Exceeding Maximum Pressure and/or Temperature Indicated.*



MODEL 65A31-B SHOWN

**SEAL DETAIL**

Type 2, Mechanical Self-Lubricated. Carbon Rotating Face. Ni-Resist Stationary Face. Fluorocarbon Elastomers (DuPont Viton® or Equivalent). Stainless Steel 18-8 Cage and Spring. Maximum Temperature of Liquid Pumped, 160°F (71°C).*



GORMAN-RUPP PUMPS

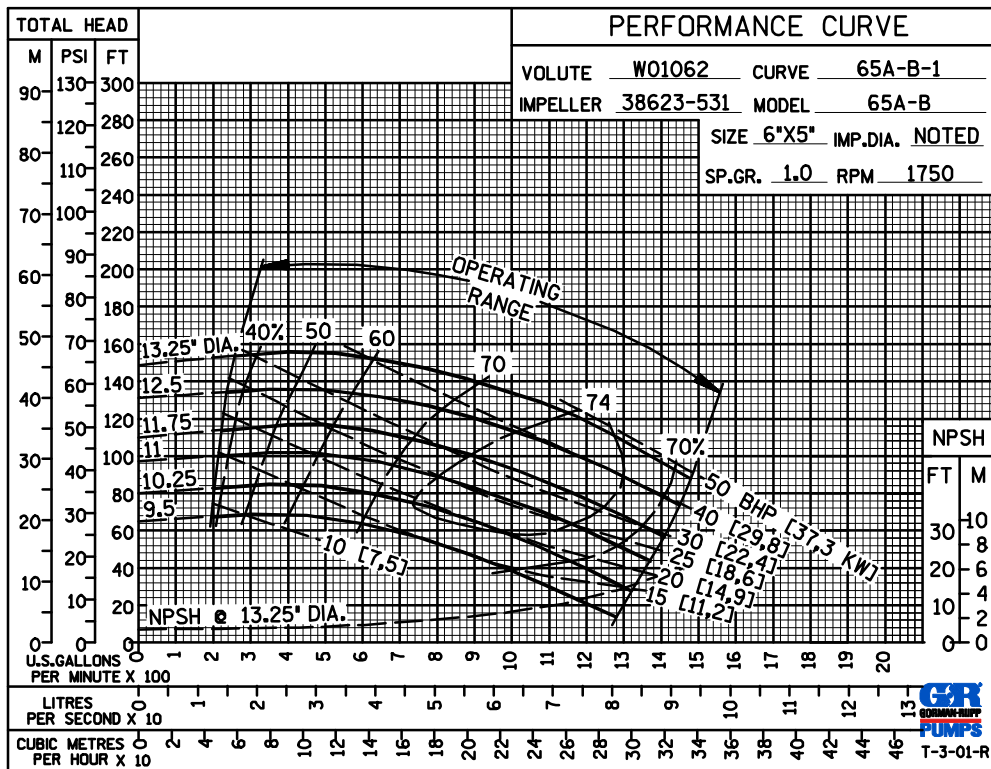
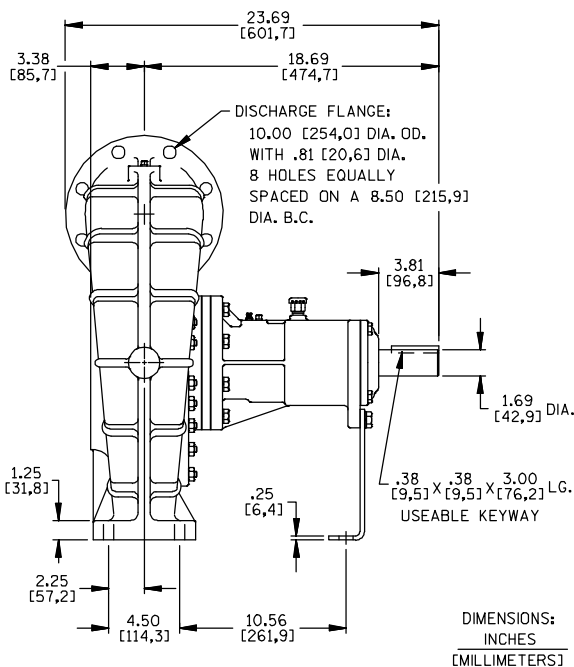
www.grpumps.com

Specifications Subject to Change Without Notice

Printed in U.S.A.

SECTION 70, PAGE 950

	65A31-B	65A32-B
NET WEIGHT:	390 LBS. (176,9 KG.)	395 LBS. (179,2 KG.)
SHIPPING WEIGHT:	435 LBS. (197,3 KG.)	440 LBS. (199,5 KG.)
EXPORT CRATE:	15.3 CU. FT. (0,43 CU. M.)	



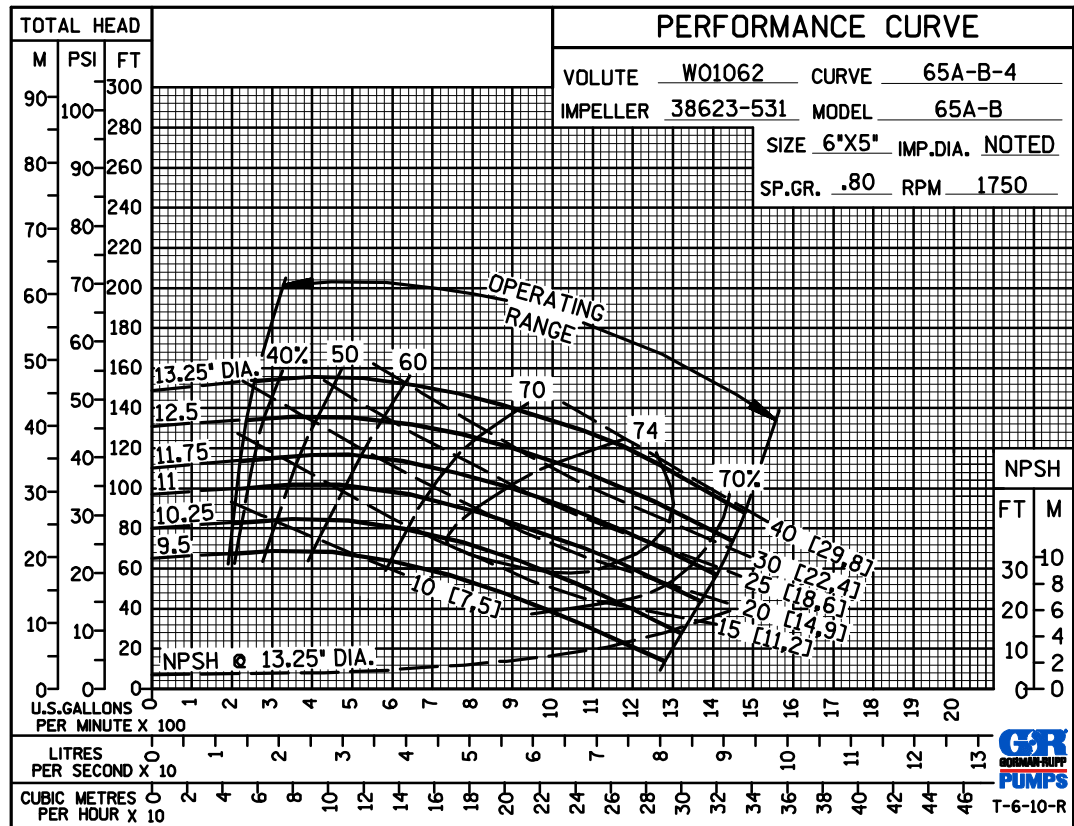
GORMAN-RUPP PUMPS

www.grpumps.com

Specifications Subject to Change Without Notice

Printed in U.S.A.

PERFORMANCE
BASED ON
PETROLEUM



GORMAN-RUPP PUMPS

www.grpumps.com

Specifications Subject to Change Without Notice

Printed in U.S.A.