

Model 818 Clock Gauge

SPECIFICATION SHEET

The Morrison Fig. 818 Clock Gauge is used for measuring liquid level in aboveground storage tanks. Readout format is on a standard 12 hour clock face. Small hand represents feet and the large hand inches. Gauge can be read up to 20-30 ft. away to within 1/8". Maximum measurement capability is 12 feet. The gauge can be rotated 360° after mounting. Vapor tight up to 5 psi.



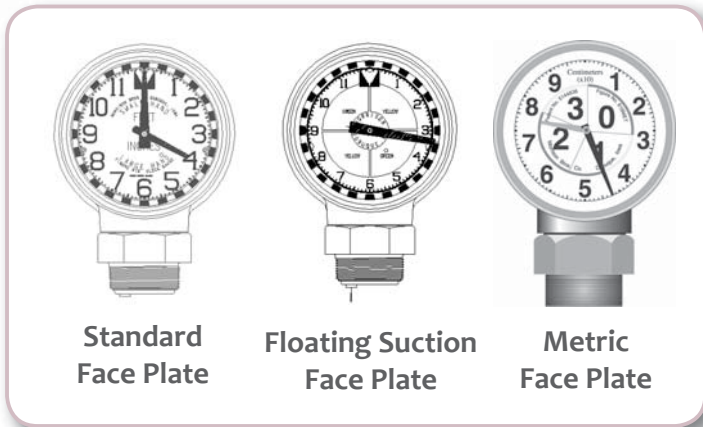
I.D. Number	A	B	C	D	E	F	G	H	I
818---0100 AG	N	M	ST	S	8.54	3.48	6.06	4.5	NPT
818---0100AGEVR	N	M	ST	S	8.54	3.48	6.06	4.5	NPT
818---0400 AG	N	M	DT	S	8.54	3.48	6.06	4.5	NPT
818---0400AGEVR	N	M	DT	S	8.54	3.48	6.06	4.5	NPT
818F--0100 AG	N	F	ST	S	9.5	3.48	6.06	4.5	NPT
818F--0100AGEVR	N	F	ST	S	9.5	3.48	6.06	4.5	NPT
818F--0400 AG	N	F	DT	S	9.5	3.48	6.06	4.5	NPT
818F--0400AGEVR	N	F	DT	S	9.5	3.48	6.06	4.5	NPT
818I--0000 AG	N	M	NO	I	8.54	3.48	6.06	4	NPT
818MEB0100 AG	N	M	ST	M	8.54	3.48	6.06	4.5	BSP
818MEB0400 AG	N	M	DT	M	8.54	3.48	6.06	4.5	BSP
818MEF0100 AG	N	F	ST	M	9.5	3.48	6.06	4.5	NPT
818MEF0100AGEVR	N	F	ST	M	9.5	3.48	6.06	4.5	NPT
818MEF0400 AG	N	F	DT	M	9.5	3.48	6.06	4.5	NPT
818MEF0400AGEVR	N	F	DT	M	9.5	3.48	6.06	4.5	NPT
818MET0100 AG	N	M	ST	M	8.54	3.48	6.06	4.5	NPT
818MET0100AGEVR	N	M	ST	M	8.54	3.48	6.06	4.5	NPT
818MET0400 AG	N	M	DT	M	8.54	3.48	6.06	4.5	NPT
818MET0400AGEVR	N	M	DT	M	8.54	3.48	6.06	4.5	NPT
818T--0100 AG**	N	M	ST	S	8.54	3.48	6.06	4.5	NPT
818T--0400 AG**	N	M	DT	S	8.54	3.48	6.06	4.5	NPT
818FT-0100 AG**	N	F	ST	S	9.5	3.48	6.06	4.5	NPT
818FT-0400 AG**	N	F	DT	S	9.5	3.48	6.06	4.5	NPT
818MEFT400 AG**	N	F	DT	M	9.5	3.48	6.06	4.5	NPT
818METT400 AG**	N	M	DT	M	8.54	3.48	6.06	4.5	NPT

**Teflon coated, DEF compatible

SPECIFICATION OPTIONS:

- A**—Overfill Alarm: Yes/No
- B**—Body Connection: Male (M), Female (F)
- C**—Float Device: Standard 2" Float (ST), Drop Tube Float (DT), or No Float (NO)
- D**—Face Plate: Standard (S), Metric (M), Floating Suction (I)
- E**—Height in inches (see diagram below)
- F**—Width in inches (see diagram below)
- G**—Clock Diameter: (Inches)
- H**—Shipping Weight: (Lbs)
- I**—Body: Aluminum with 2" NPT or BSP (Metric) Connection

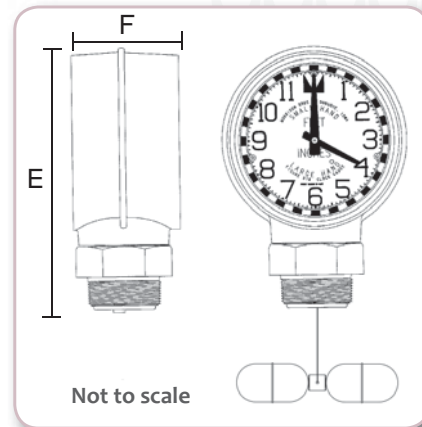
Float*: Stainless Steel; Cable: Stainless Steel



Standard Face Plate

Floating Suction Face Plate

Metric Face Plate



Not to scale

570 E. 7th Street, P.O. Box 238 | Dubuque, IA 52004-0238
t. 563.583.5701 | 800.553.4840 | f. 563.583.5028