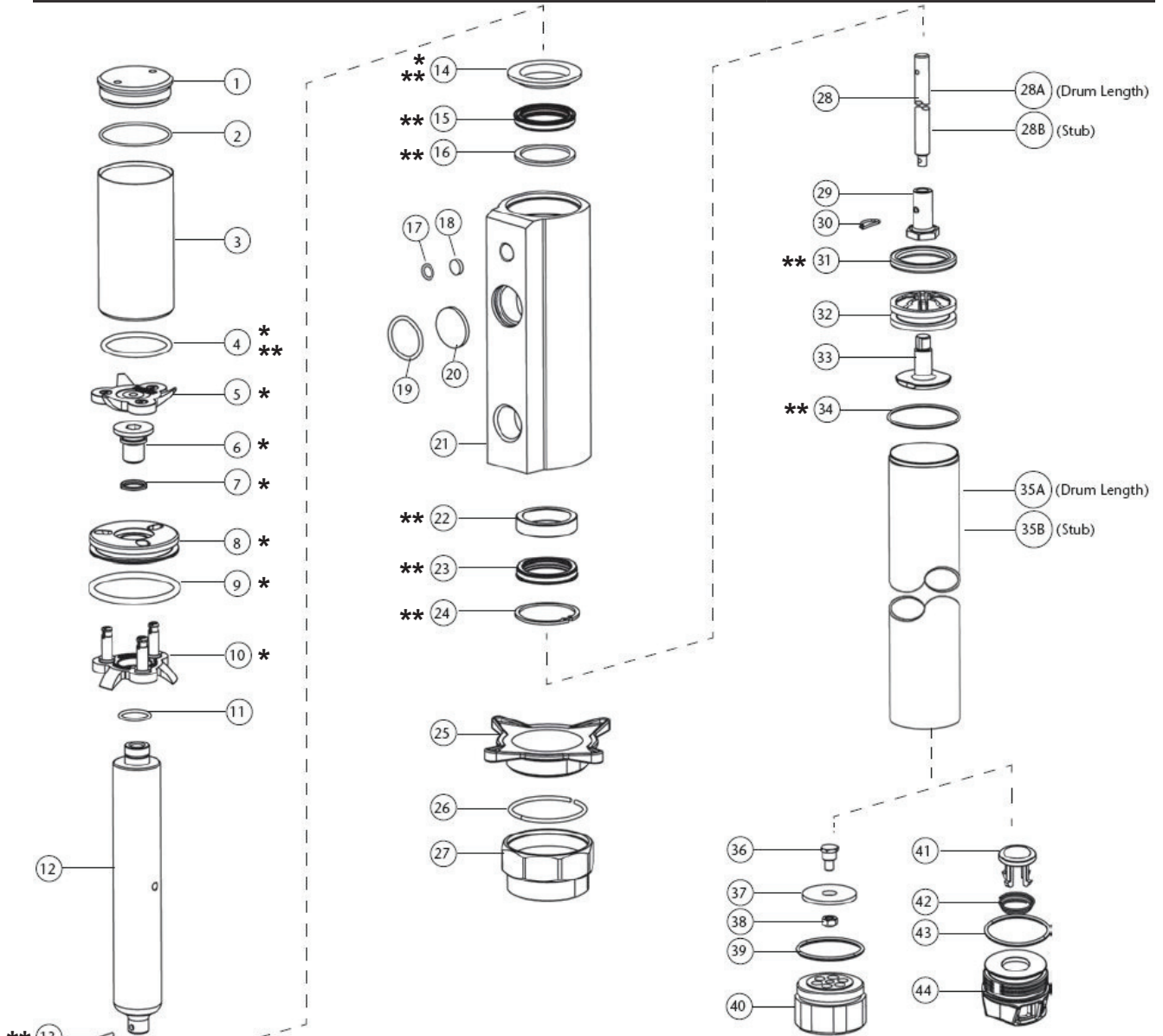


Parts List

Gen 2 - Lynx 1:1 Pump (made in EU⁽¹⁾)

Description	Item Number(s)	Repair Kits	
Packing kit	4, 13, 14, 15, 16, 22, 23, 24, 31, 34	** Packing Kit - 833109	
Air-valve	4, 5, 6, 7, 8, 9, 10, 14	* Air Valve Kit - 833110	
Central bar	12, 13, 14, 15, 16, 22, 23, 24, 34	NOTE: The kits listed above and the bung adapter below are the only parts available for this pump.	
Air cylinder	1, 2, 3, 14		
Piston kit	29, 31, 32, 33, 34		
Foot valve (Drum Length)	41, 42, 43, 44		
Foot valve (Stub)	36, 37, 38, 39, 40		
Pump tube (Drum Length)	34, 35A		
Pump tube (Stub)	34, 35B		
Piston rod (Drum Length)	13, 28A, 29, 30, 31, 32, 33, 34		
Piston rod (Stub)	13, 28B, 29, 30, 31, 32, 33, 34		
Air filter kit	17, 18, 19, 20		
Bung adapter	25, 26, 27		
			4411-021



* Included in 833110 repair kit
 ** Included in 833109 repair kit