

SUBMITTAL DATA SHEET

Waste Water Effluent | Sewage Ejectors | Grinders Sewage Ejector - 3/4 & 1 HP



Rugged cast iron construction submersible pumps with stainless steel fasteners and motor shaft for residential, commercial, municipal, and industrial applications. Single phase models available with 3/4 and 1 HP and three phase models available in 3/4 and 1 HP.

With the exclusive triple seal system, this pump offers three levels of sealing for outstanding reliability! A double mechanical seal located inside the oil chamber provides two full levels of sealing. An additional V-Ring type lip seal between the oil chamber and pump volute provides a third, extra level of sealing, and enhanced mechanical seal protection.

Sewage Ejector

| Model Number | Voltage | HP | Phase | Solids Size | Speed (RPM) | Amps | Discharge | Weight (lbs.) | Max Head (feet) | Max Flow (GPM) |
|--------------|---------|-----|-------|-------------|-------------|------------------|------------------|---------------|-----------------|----------------|
| 407511SJ | 115 | 3/4 | 1 | 2" | 1750 | 14.0/7.7-7.0 | Horiz. Flange ** | 84 | 25 | 200 |
| 407512SJ | 208/230 | 3/4 | 1 | 2" | 1750 | 14.0/7.7-7.0 | Horiz. Flange ** | 84 | 25 | 200 |
| 407532SJ | 208/230 | 3/4 | 3 | 2" | 1750 | 5.5-5.0/2.5, 2.0 | Horiz. Flange ** | 80 | 25 | 200 |
| 407534SJ | 460 | 3/4 | 3 | 2" | 1750 | 5.5-5.0/2.5, 2.0 | Horiz. Flange ** | 80 | 25 | 200 |
| 410012SJ | 208/230 | 1 | 1 | 2" | 1750 | 11.1-10.0 | Horiz. Flange ** | 84 | 30 | 240 |
| 410032SJ | 208/230 | 1 | 3 | 2" | 1750 | 11.1-10.0 | Horiz. Flange ** | 80 | 30 | 240 |
| 410034SJ | 460 | 1 | 3 | 2" | 1750 | 5.5-5.0/2.5, 2.0 | Horiz. Flange ** | 80 | 30 | 240 |

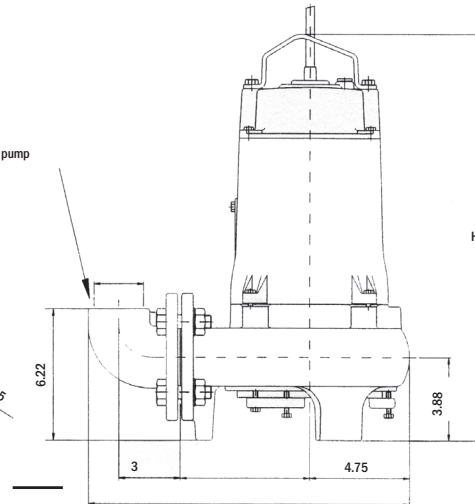
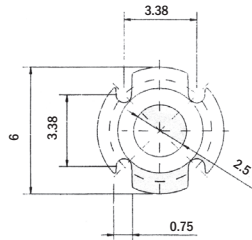
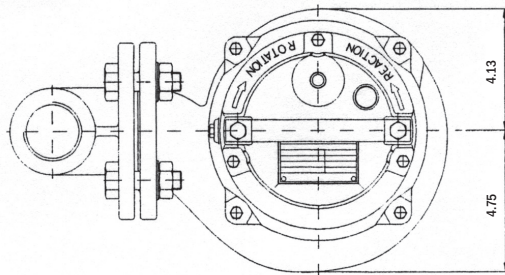
**Pump comes complete with bolt-on discharge elbow, 2" flange x 2" NPT, standard, 2" flange x 3" NPT, optional.

Motor Data, 60 Hz

| Model Number | Phase | Output Power BHP | Volts | Full Load Amps | Locked Rotor Amps | NEMA Code Letter | Pole/Speed (RPM) |
|--------------|-------|------------------|---------|----------------|-------------------|------------------|------------------|
| 407511SJ | 1* | 3/4 | 115 | 6.9 | 31.0 | K | 4/1750 |
| 407512SJ | 1* | 3/4 | 230 | 6.9 | 31.0 | K | 4/1750 |
| 407532SJ | 3** | 3/4 | 208/230 | 4.2-3.8 | 22.4-20.3 | K | 4/1750 |
| 407534SJ | 3** | 3/4 | 460 | 1.9 | 10.2 | K | 4/1750 |
| 410012SJ | 1* | 1.0 | 230 | 10.0 | 38 | K | 4/1750 |
| 410032SJ | 3** | 1.0 | 208/230 | 5.5-5.0 | 22.4-20.3 | K | 4/1750 |
| 410034SJ | 3** | 1.0 | 460 | 2.5 | 10.1 | K | 4/1750 |

* Start switch and capacitor integrated into top of pump.

** These three phase motors are tri-voltage, 208/230/460.



SUBMITTAL INFORMATION

- Unique triple seal design
- Patented Contra Block® impeller with adjustable wear plate system, for clog-free operation
- 2" Discharge
- High torque capacitor start single phase motors
- Rugged cast iron construction with stainless steel fasteners and motor shaft
- Oil-filled motors (non-toxic oil)
- Stainless steel open loop lifting bale for ease of removal

NO-LEAD: The weighted average of the wetted surface of this no-lead product contacted by consumable water contains less than one quarter of one percent (0.25%) lead.



A.Y. McDonald Mfg. Co.
P.O. Box 508
Dubuque, IA 52004-0508

Toll Free: 1-800-292-2737
Fax: 1-800-832-9296
Hours: 7:00 a.m. - 5:00 p.m., CST

sales@aymcdonald.com
www.aymcdonald.com

A.Y. McDonald considers the information on this assembly drawing correct when published. Item and option availability, including specifications, are subject to change without notice.

Submitted by:

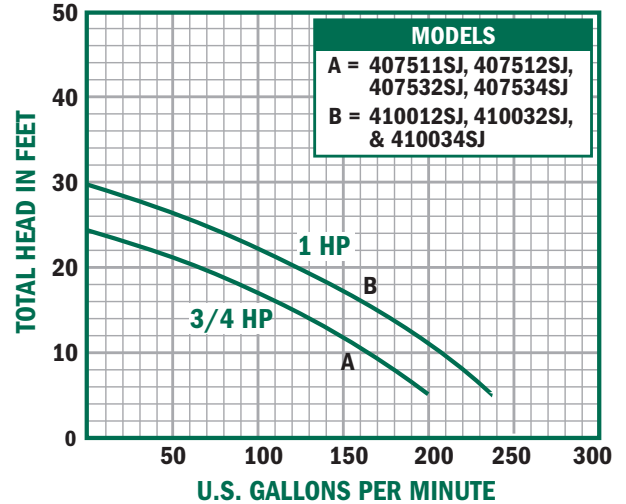
SUBMITTAL DATA SHEET

Waste Water Effluent | Sewage Ejectors | Grinders Sewage Ejector - 3/4 & 1 HP

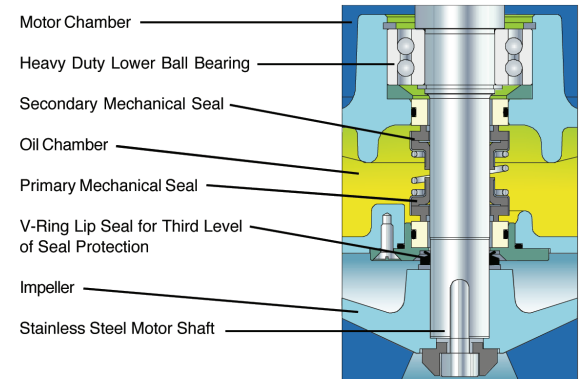


Materials of Construction & Motor Specifications

| | |
|------------------------------|---|
| Upper Motor Lid | Cast Iron ASTM A48 Class 30 |
| Motor Housing | Cast Iron ASTM A48 Class 30 |
| Oil Chamber | Cast Iron ASTM A48 Class 30 |
| Volute | Cast Iron ASTM A48 Class 30 |
| Bottom Plate | Cast Iron ASTM A48 Class 30 |
| Impeller | Cast Iron ASTM A48 Class 30 |
| Lifting Bail | AISI 304 Stainless Steel |
| Oil (motor & oil chamber) | Non-toxic white mineral oil (Marcol 52) |
| External Hardware | AISI 304 Stainless Steel |
| O-ring | Buna-N |
| Motor Shaft | AISI 420 Stainless Steel |
| Upper Bearing | Single row ball bearing |
| Lower Bearing(s) | Single row ball bearing |
| Upper Shaft Seal (secondary) | Rotating carbon face w/ stationary ceramic face |
| Lower Shaft Seal (primary) | Rotating carbon face w/ stationary ceramic face. Includes V-ring lip seal for lower seal protection. |
| Motor Design | NEMA design B, squirrel cage induction, oil filled, non-toxic oil |
| Motor Type | Enclosed submersible |
| Insulation Class | Class B, rated at 120° C |
| Motor Protection | Single Phase: Internal thermal protection with automatic reset. Installer must provide circuit breaker for short circuit protection per N.E.C. standards. Three Phase: Installer must provide external motor overload protection device such as a contactor w/ thermal relay, and circuit breaker for short circuit protection per N.E.C. standards. |
| Service Factor | 1.15 |
| Voltage Tolerance | ± 10% from name plate rating |



Triple Seal System



Cable Specifications

| Model Number | Volts | Diameter | Power Cable | Length (Feet) | Outer Jacket |
|--------------|---------|-------------|-----------------|---------------|-------------------------|
| 407511SJ | 115 | 14/3 SJE00W | 0.36in (9.2mm) | 20ft (6m) | Thermoplastic Elastomer |
| 407512SJ | 208/230 | 14/3 SJE00W | 0.36in (9.2mm) | 20ft (6m) | Thermoplastic Elastomer |
| 407532SJ | 208/230 | 14/3 SJE00W | 0.36in (9.2mm) | 20ft (6m) | Thermoplastic Elastomer |
| 407534SJ | 460 | 16/4 SE00W | 0.43in (10.9mm) | 20ft (6m) | Thermoplastic Elastomer |
| 410012SJ | 230 | 14/3 SJE00W | 0.36in (9.2mm) | 20ft (6m) | Thermoplastic Elastomer |
| 410032SJ | 208/230 | 16/4 SE00W | 0.43in (10.9mm) | 20ft (6m) | Thermoplastic Elastomer |
| 410034SJ | 460 | 16/4 SE00W | 0.43in (10.9mm) | 20ft (6m) | Thermoplastic Elastomer |

- Maximum submergence, ft. (m) - 65 (20)
 - Maximum temp. of pumped fluid - 104°F (40°C) continuous, 122°F (50°C) intermittent

NO-LEAD: The weighted average of the wetted surface of this no-lead product contacted by consumable water contains less than one quarter of one percent (0.25%) lead.



A.Y. McDonald Mfg. Co.
 P.O. Box 508
 Dubuque, IA 52004-0508

Toll Free: 1-800-292-2737
 Fax: 1-800-832-9296
 Hours: 7:00 a.m. - 5:00 p.m., CST

sales@aymcdonald.com
 www.aymcdonald.com

A.Y. McDonald considers the information on this assembly drawing correct when published. Item and option availability, including specifications, are subject to change without notice.

Submitted by: