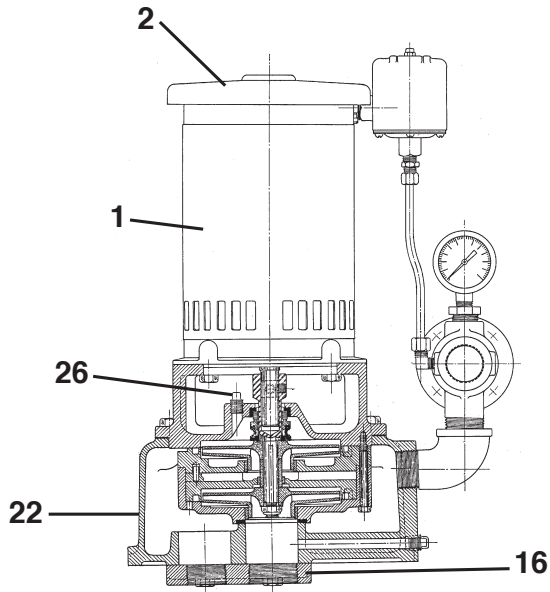
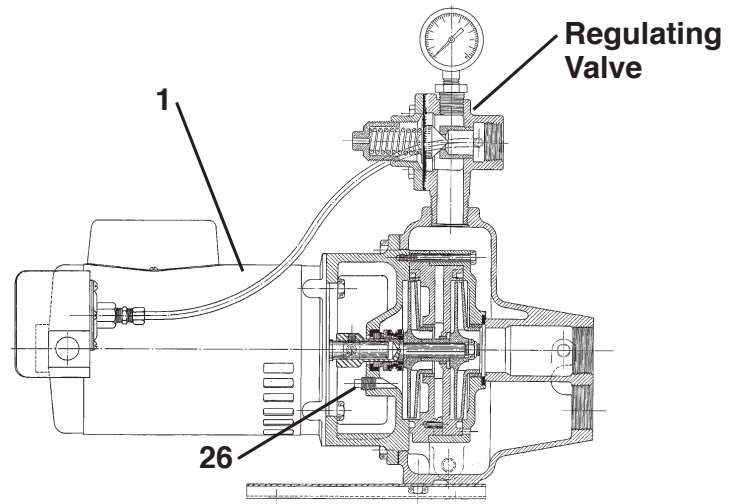


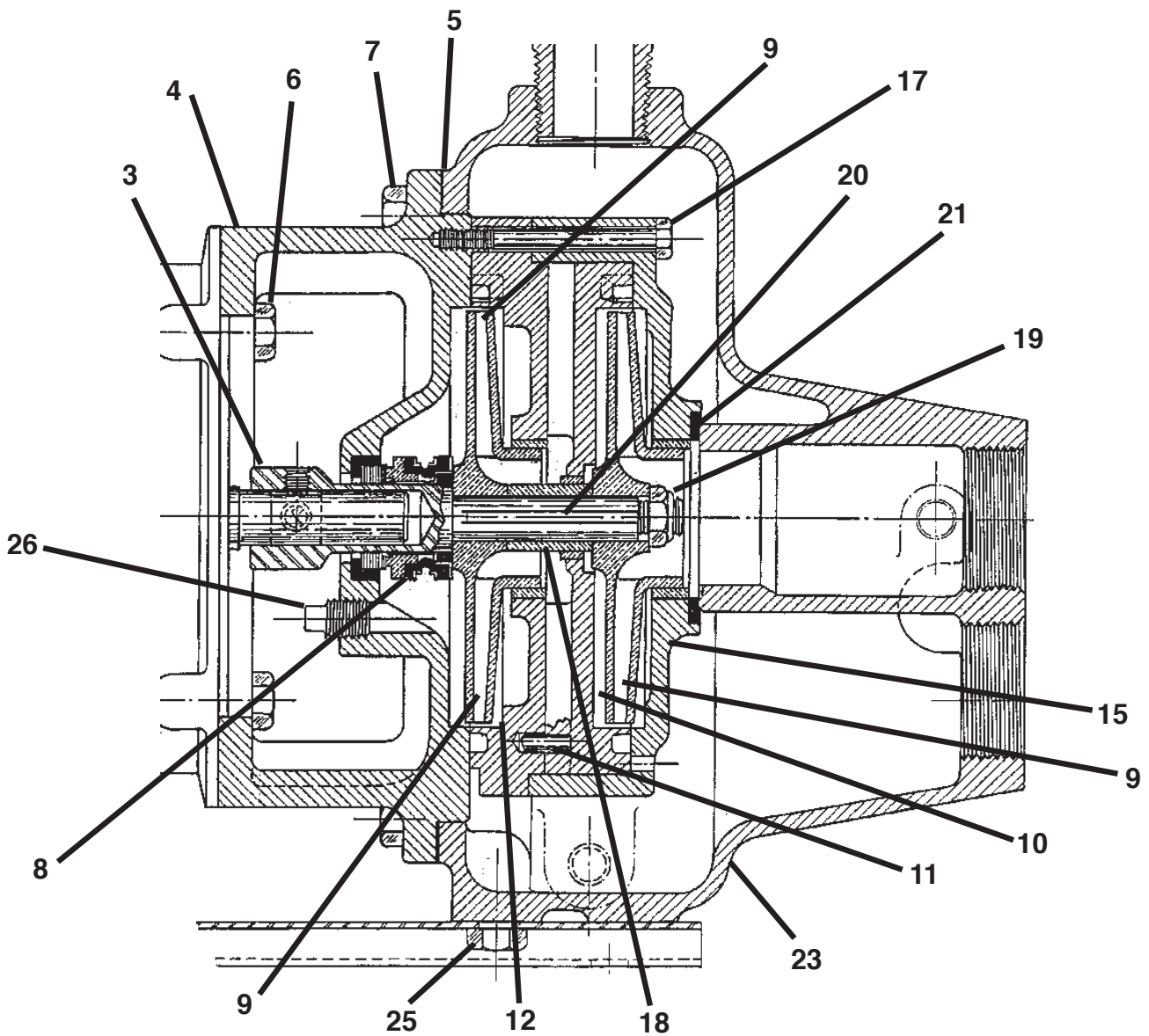
# 1500 Series Repair Parts



**SERIES 1000 - VERTICAL**



**SERIES 1500 - HORIZONTAL**



# 1500 Series Repair Parts

	1/2 HP 1050 & 1550	3/4HP 1075 & 1575	1 HP 1010 & 1510	3/4HP 1075SW & 1575SW	1 HP 1010SW & 1510SW	1 1/2 HP 1015SW & 1515SW
Description	Part #	Part #	Part #	Part #	Part #	Part #
① Motor	6127-154	6127-154	6127-160	6127-154	6127-160	6127-156
⑨ Brass Impeller	6316-210	6316-209	6316-208	6316-210	6316-209	6316-208
⑨ Plastic Impeller	6316-252	6316-251	6316-250	6316-252	6316-251	6316-250

Part #	Description
3129-394	② 1000 Series motor cover (Magnetek)
3129-398	② 1000 Series motor cover (Emerson)
6127-334	③ Shaft assembly
6316-241	④ Adapter
6152-207	⑤ Body Gasket
3100-529	⑥ ⑦ Capscrews
6422-103	⑧ Shaft Seal
6316-216	⑩ 1st Diffuser
3121-509	⑪ Drive pin (supplied w/1 duffuser)
6316-217	⑫ 2nd diffuser
6127-335	⑮ Diffuser cover assembly (includes body gasket & cover gasket)
6421-142	⑯ Flange assembly

Part #	Description
3100-545	⑰ Diffuser capscrews
6127-336	⑱ Impeller spacer
3104-126	⑲ Impeller locknut
6316-228	⑳ Impeller Key
6316-213	㉑ Cover gasket
6316-234	㉒ 1000 Series body assembly
6316-235	㉓ 1500 Series body assembly
6127-248	㉔ 1500 Series pump foot
3100-530	㉕ Pump foot capscrew
3127-351	㉖ Series vent cock (1000 Series)
3126-103	㉖ 1/8" plug
6316-227	Diffuser Cover
6316-221	Impeller spacer 1500/1000 Series

## Shallow Well Jet Packages

Venturi Assembly		
Models	HP	Part#
659 JP	3/4 HP	6155-314
658JP	1 HP	6155-316
652JP	1 1/2 HP	6155-212

## Deep Well Jet Packages

2003 & Newer Models	Venturi Part#	Nozzle Part#
107MP & 123MP	6421-218	6420-204
108MP & 124MP	6421-216	6420-204
109MP & 125MP	6414-207	6420-204
110MP & 126MP	6413-203	6128-201
111MP & 127MP	6421-217	6420-204
112MP & 128MP	6421-219	6420-207
113MP & 129MP	6414-208	6420-205
114MP & 130MP	6414-208	6420-204