

# SUBMITTAL DATA SHEET

Sump, Sewage, & Effluent Pumps  
DuraMAC™ | Guardian

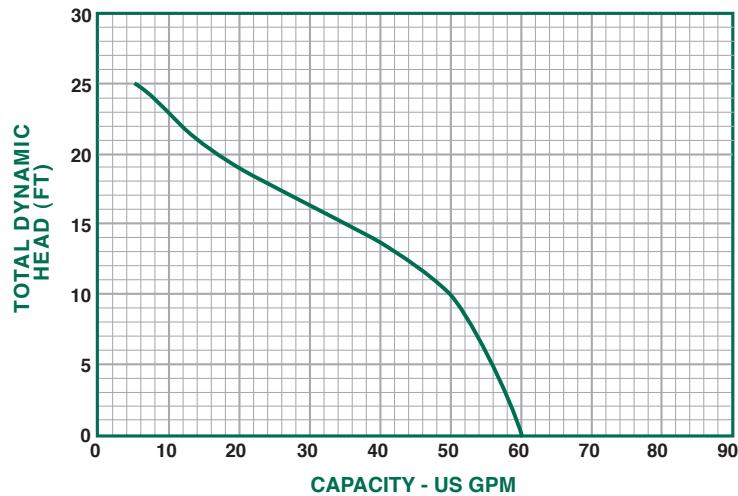
## 5033CUEF & 5033CTEF25 Effluent Pump



See Pumps & Accessories  
Price List for Limited  
Warranty details.

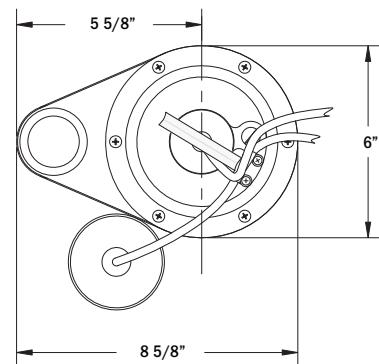
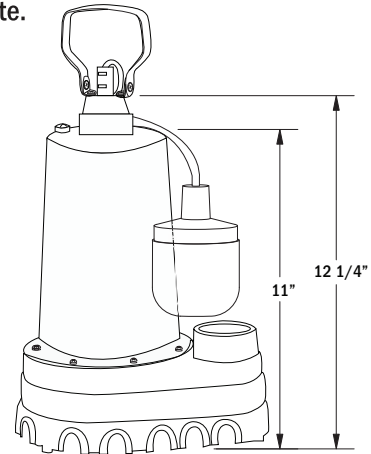
With a rugged cast iron construction, this pump can handle up to 60 gallons per minute.

### Effluent Pump Performance Curve



#### PERFORMANCE CHART

Model	Gallons per Minute in Feet					
5033CUEF	0	5	10	15	20	25
5033CTEF25	60	56	50	35	15	6



#### SUBMERSIBLE CAST IRON EFFLUENT PUMP - 1 1/2" DISCHARGE

Model	HP	Volts	Hz	Amps	Construction	Discharge Size	Cord Length	Solids Handling	RPM	Phase
5050CUEF (NO SWITCH)	1/2	120	60	7.6	Cast Iron	1 1/2"	10'	5/8"	3450	1
5050CUEF25 (NO SWITCH)	1/2	120	60	7.6	Cast Iron	1 1/2"	25'	5/8"	3450	1
5050CTEF	1/2	120	60	7.6	Cast Iron	1 1/2"	10'	5/8"	3450	1
5050CTEF25	1/2	120	60	7.6	Cast Iron	1 1/2"	25'	5/8"	3450	1

#### SUBMITTAL INFORMATION

- Split Capacitor Motor - 1/3 HP continuous duty, thermal protected
- Lifts water up to 25' of vertical height
- Also available without a switch
- 10' power cord, 25' cords are also available for an additional charge
- Discharge - Large 1 1/2" discharge for high capacity pumping



NO-LEAD: The weighted average of the wetted surface of this no-lead product contacted by consumable water contains less than one quarter of one percent (0.25%) lead.



A.Y. McDonald Mfg. Co.  
P.O. Box 508  
Dubuque, IA 52004-0508

Toll Free: 1-800-292-2737  
Fax: 1-800-832-9296  
Hours: 7:00 a.m. - 5:00 p.m., CST

sales@aymcdonald.com  
www.aymcdonald.com

A.Y. McDonald considers the information on this assembly drawing correct when published. Item and option availability, including specifications, are subject to change without notice.

Submitted by: