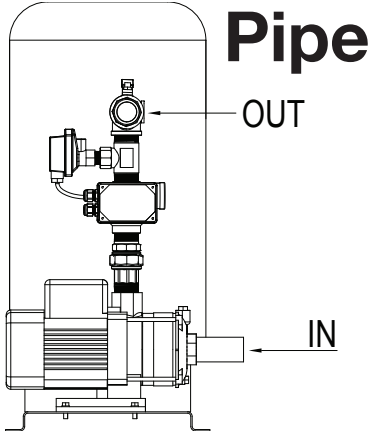




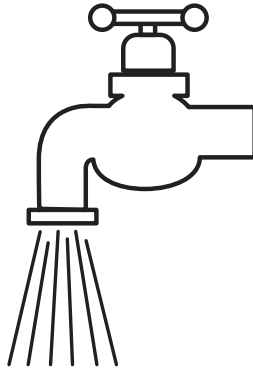
DuraMAC™ Water Pressure Booster System Quick Start Guide

1

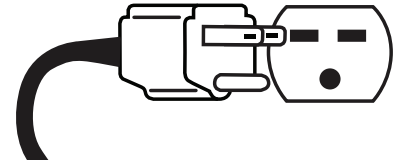


Pipe

Purge



Plug



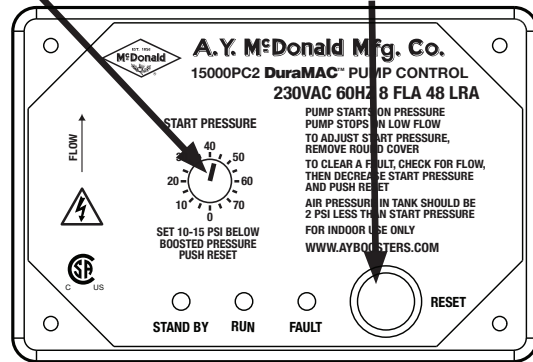
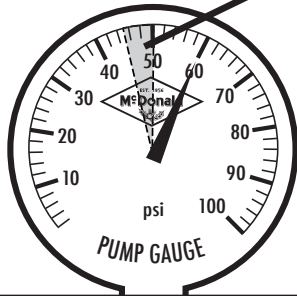
2

Look

Set

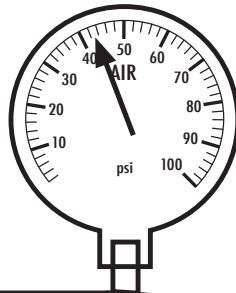
Push

SET DIAL
10-15 PSI
BELOW
MAX
BOOSTED
PRESSURE



3

Air Pressure



**2 PSI LESS THAN
START PRESSURE
DIAL SETTING**

**BE SURE
WATER PRESSURE
IS AT 0 WHEN
SETTING TANK**

3210-490 4/13



WARNING: It is unlawful in CALIFORNIA & VERMONT (effective 1/1/2010); MARYLAND (effective 1/1/2012); LOUISIANA (effective 1/1/2013) and the UNITED STATES OF AMERICA (effective 1/4/2014) to use any product in the installation or repair of any public water system or any plumbing in a facility or system that provides water for human consumption if the wetted surface area of the product has a weighted average lead content greater than 0.25%. This prohibition does not extend to service saddles used in California, Louisiana or under USA Public Law 111-380.

AYBOOSTERS.COM

Toll-Free Customer Service **1-800-292-2737**