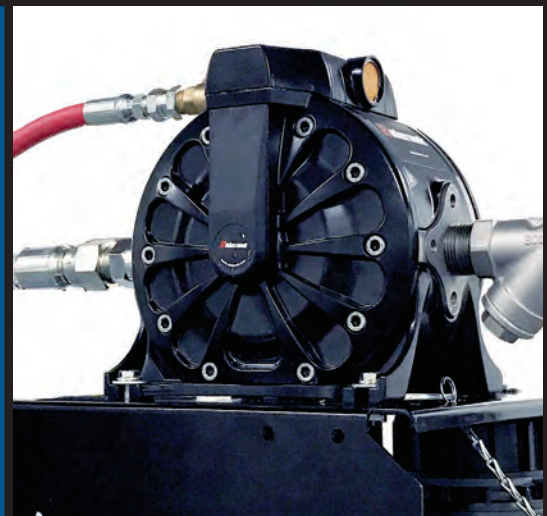
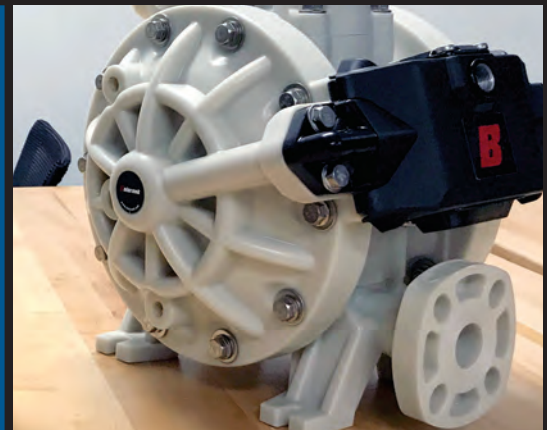


Balcrank

Fluid Dispensing Systems

Automotive | Commercial | Industrial

Centerflo Air Operated Double Diaphragm (AODD) Pumps



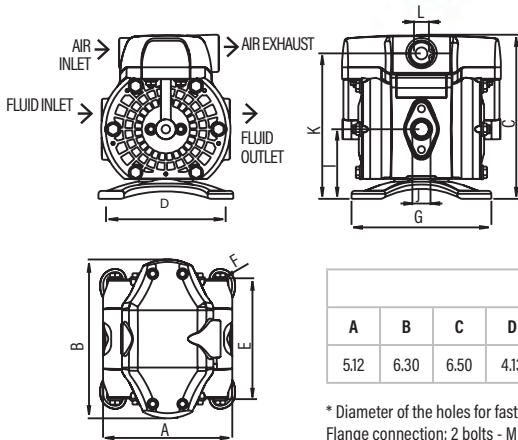
Pumps

Signature Series Product Selection Matrix

MAX. FREE FLOW	AIR INLET	FLUID IN / OUT	WETTED PARTS		RECOMMENDED FLUID TYPES	RECOMMENDED APPLICATIONS
			CHECK BALLS	DIAPHRAGM		
CF10 POLYPROPYLENE						
10 gal/min (38 l/min)	3/8" NPSM(F)	1/2" NPT(F)	PTFE (Teflon)	Hytrel [®]	Anti-freeze (Glycol) and windshield wash solution	Fluid dispensing and transfer
CF10 POLYPROPYLENE/DEF						
10 gal/min (38 l/min)	3/8" NPSM(F)	1/2" BSPP(F)	PTFE (Teflon)	Hytrel [®]	Diesel exhaust fluid	Fluid dispensing and transfer
CF15 POLYPROPYLENE						
15 gal/min (50 l/min)	3/8" NPSM(F)	1/2" NPT(F)	PTFE (Teflon)	Hytrel [®]	Anti-freeze (Glycol) and windshield wash solution	Fluid dispensing, transfer, and evacuation
CF15 POLYPROPYLENE/DEF						
15 gal/min (50 l/min)	3/8" NPSM(F)	1/2" BSPP(F)	PTFE (Teflon)	Hytrel [®]	Diesel exhaust fluid	Fluid dispensing and transfer
CF15 ALUMINUM						
15 gal/min (50 l/min)	3/8" NPSM(F)	1/2" NPT(F)	Buna-N [™]	Buna-N [™]	Light viscosity fluids synthetic, mineral oils, and used oil	Fluid dispensing, transfer, and evacuation
CF15 SPECIALTY/MIXING NOTE: both fluids and their resulting solution must be compatible with the pump wetted materials						
15 gal/min (50 l/min)	3/8" NPSM(F)	IN - 2-3/8" NPT(F) Out - 1/2" NPT(F)	PTFE (Teflon)	Hytrel [®]	1:1 solutions of water, Anti-freeze (Glycol), and windshield wash	Dual inlet pumps for 1:1 proportion mixing of fluids with similar viscosity
CF30 POLYPROPYLENE						
28 gal/min (106 l/min)	3/8" NPSM(F)	1" NPT(F)	PTFE (Teflon)	Hytrel [®]	Anti-freeze (Glycol) and windshield wash solution	Fluid dispensing, transfer, and evacuation
CF30 POLYPROPYLENE/DEF						
28 gal/min (106 l/min)	3/8" NPSM(F)	1" BSPP(F)	PTFE (Teflon)	Hytrel [®]	Diesel exhaust fluid	Fluid dispensing and transfer
CF30 ALUMINUM						
28 gal/min (106 l/min)	3/8" NPSM(F)	1" NPT(F)	Buna-N [™]	Buna-N [™]	Light viscosity fluids synthetic, mineral, oils, used oil, and diesel	Fluid dispensing, transfer, and evacuation
CF50 POLYPROPYLENE						
50 gal/min (200 l/min)	3/8" NPSM(F)	1" ANSI FLANGE	Acetal	Hytrel [®]	Diesel exhaust fluid, Anti-freeze, (Glycol) and windshield wash solution	Fluid dispensing and transfer
CF50 ALUMINUM						
50 gal/min (200 l/min)	3/8" NPSM(F)	1" NPT(F)	Buna-N [™]	Buna-N [™]	Light viscosity fluids, synthetic, mineral oils, used oil, and diesel	Fluid dispensing and transfer
CF65 ALUMINUM						
65 gal/min (250 l/min)	1/2" NPSM(F)	1 1/2" NPT(F)	Acetal	Hytrel [®]	Light viscosity fluids, synthetic, mineral oils, used oil, windshield wash solution, and diesel	High volume transfer, bulk fill, de-watering, and evacuation
65 gal/min (250 l/min)	1/2" NPSM(F)	1 1/2" NPT(F)	Buna-N [™]	Buna-N [™]	Light viscosity fluids synthetic, mineral, oils, used oil, and diesel	Fluid dispensing, transfer, and evacuation



AODD CenterFlo CF10



DIMENSIONS INCHES											
A	B	C	D	E	F*	G	I	J	K	L	
5.12	6.30	6.50	4.13	4.80	0.31	5.54	2.76	1/2" (F)	5.75	3/8" (F)	

* Diameter of the holes for fasteners in each of the four pump feet.
Flange connection: 2 bolts - M 5 (1.61" between centers)

TECHNICAL DATA	
Air inlet	3/8" NPSM(F)
Fluid inlet port	1/2" NPT(F) 1120-029A 1/2" BSPP(F) for DEF 1120-034
Fluid outlet port	1/2" NPT(F) 1120-029A 1/2" BSPP(F) for DEF 1120-034
Max. free flow	10 gal/min (38 l/min)
Air pressure range	22 to 102 psi (1.5 to 7 bar)
Solids in suspension	1/8" (3 mm)
Wetted Materials	PTFE (Teflon), Viton [®] , Polypropylene, Stainless Steel, Acetal, and Hytrel [®]
Recommended Fluids	Anti-freeze (Glycol) and windshield wash solution
Recommended Applications	Fluid dispensing, transfer, DEF, and evacuation
Service Bulletin	SB 1121

** Balcrank does not recommend pumping windshield wash or any other fluid below 100° flash point. Contact Balcrank for additional information.

Fluids & Applications

CenterFlo pumps can handle a wide range of fluids used for vehicle service.

Typical applications are transferring, dispensing, and evacuation, up to 10 gal/min. They can be used as stand-alone pumps for transfer applications or as systems pumps in distribution systems that include hose reels.

Fluids

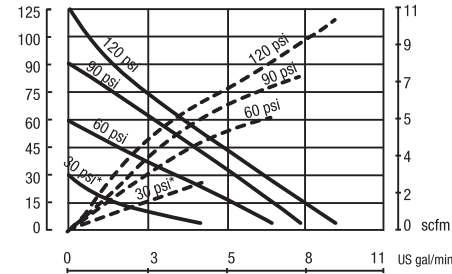
- Anti-freeze (Glycol)
- Windshield wash solution
- DEF

Markets Served

- Car and truck dealers
- Fleets
- Mining and construction
- Railroad and mass transit vehicles
- In-plant
- Lube truck

Pressure relief valve kit 3120-201 for this pump, not included.

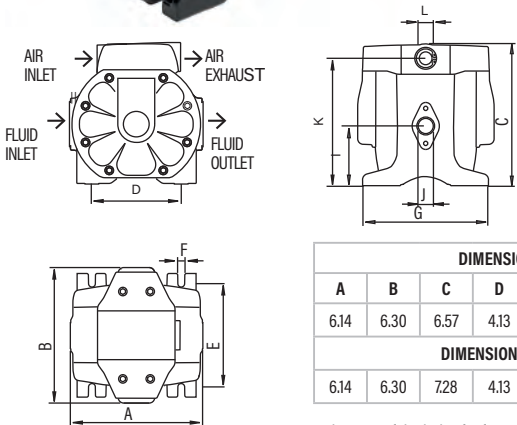
MODELS AVAILABLE	DESCRIPTION
1120-029A	CF10 Polypropylene
1120-034	CF10 Polypropylene / DEF
3120-201	Pressure Relief for Diaphragm 1/2" NPT



FLUID PRESSURE psi
— Outlet pressure
--- Air consumption

(* 2 bar test with a PTFE (Teflon) diaphragms pump.

AODD CenterFlo CF15



DIMENSIONS INCHES) FOR ALUMINUM PUMP										
A	B	C	D	E	F*	G	I	J	K	L
6.14	6.30	6.57	4.13	4.80	0.31	5.75	2.76	1/2" (F)	5.91	3/8" (F)
DIMENSIONS INCHES FOR POLYPROPYLENE PUMP										
6.14	6.30	7.28	4.13	4.80	0.31	5.54	3.27	1/2" (F)	6.54	3/8" (F)

* Diameter of the holes for fasteners in each of the four pump feet.
Flange connection: 2 bolts - M 5 (1.61" between centers)

Fluids & Applications

CenterFlo pumps can handle a wide range of fluids used for vehicle service.

Typical applications are transferring, dispensing, and evacuation up to 15 gal/min. They can be used as stand-alone pumps for transfer applications or as systems pumps in distribution systems that include hose reels.

Fluids

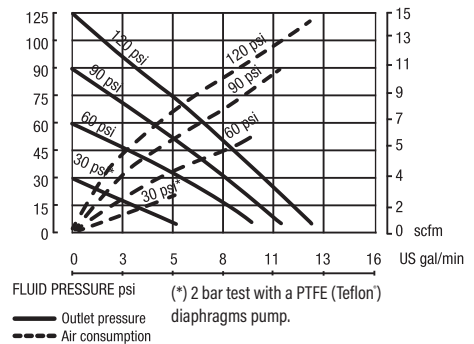
- Anti-freeze (Glycol)
- Light viscosity fluids
- Windshield wash solution
- Synthetic and mineral oils
- DEF
- Used oil & anti-freeze

Markets Served

- Car and truck dealers
- Fleets
- Mining and construction
- Railroad and mass transit vehicles
- In-plant
- Lube trucks

Pressure relief valve kit 3120-201 for this pump, not included.

MODELS AVAILABLE	DESCRIPTION
1120-023A	CF15 Polypropylene
1120-027	CF15 Aluminum
1120-025A	CF15 Polypropylene / DEF
3120-201	Pressure Relief for Diaphragm 1/2" NPT



** Balcrank does not recommend pumping windshield wash or any other fluid below 100° flash point. Contact Balcrank for additional information.

TECHNICAL DATA	
Air inlet	3/8" NPSM(F)
Fluid inlet port	1/2" NPT(F) 1120-023A, 1120-027 1/2" BSPP(F) for DEF 1120-025A
Fluid outlet port	1/2" NPT(F) 1120-023A, 1120-027 1/2" BSPP(F) for DEF 1120-025A
Max. Free Flow	15 gal/min (50 l/min)
Air pressure range	22 to 102 psi (1.5 to 7 bar)
Solids in suspension	1/8" (3 mm)
Wetted Materials	
1120-023A - 1120-025A	PTFE (Teflon), Viton®, Polypropylene, Stainless Steel, and Hytrel®
1120-027	Aluminum, PTFE, Viton®, Polypropylene, Buna-N™, and Stainless Steel
Recommended fluids	
1120-023A	Anti-freeze (Glycol) and windshield wash solution
1120-025A	Diesel exhaust fluid
1120-027	Light viscosity fluids, synthetic, mineral oils, anti-freeze, and used oil
Recommended Applications	Fluid dispensing, transfer, and evacuation
Service Bulletin	SB 1122

AODD CenterFlo CF15 Mixing



Fluids & Applications

CenterFlo pumps with a dual inlet for 1:1 ratio mixing of fluids with similar viscosities, like windshield wash or anti-freeze with water. All dual inlet pumps have 2 x 2 - 3/8" NPT(F) inlet ports.

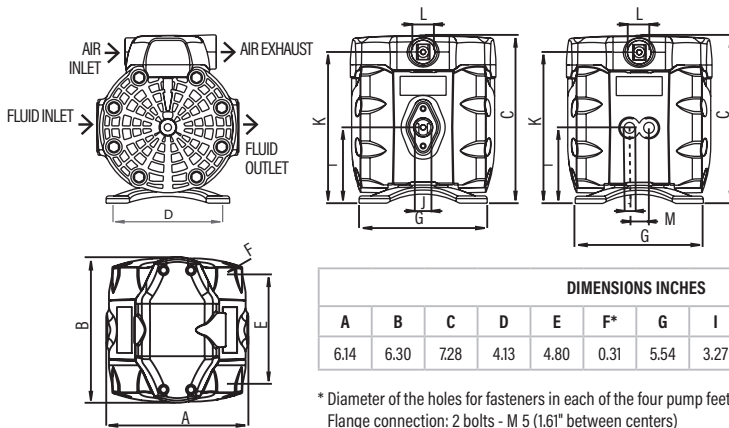
Fluids

- Anti-freeze (glycol)
- Windshield wash solution

Markets Served

- Car and truck dealers
- Fleets
- Mining and construction
- Railroad and mass transit vehicles
- In-plant

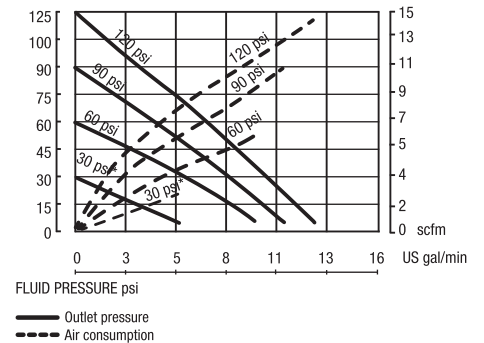
Pressure relief valve kit 3120-201 for this pump, not included.



TECHNICAL DATA	
Air inlet	3/8" NPSM(F)
Fluid inlet port	2 - 3/8" NPT(F)
Fluid outlet port	1/2" NPT(F) & flange
Max. free flow	15 gal/min (50 l/min)
Air pressure range	22 to 102 psi (1.5 to 7 bar)
Solids in suspension	1/8" (3 mm)
Wetted Materials	Teflon®, Viton®, Polypropylene, Stainless Steel, Acetal, and Hytrel®
Recommended Fluids	Anti-freeze (Glycol) and windshield wash solution
Recommended Applications	Dual inlet pumps for 1:1 proportion mixing of fluids with similar viscosity. NOTE: both fluids and their resulting solution must be compatible with the pump wetted materials
Service Bulletin	SB 1123

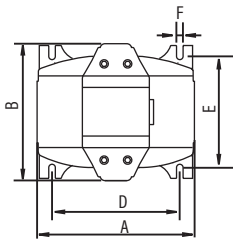
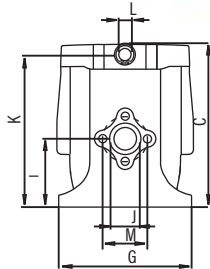
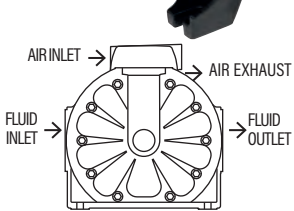
** Balcrank does not recommend pumping windshield wash or any other fluid below 100° flash point. Contact Balcrank for additional information.

MODELS AVAILABLE	DESCRIPTION
1120-028A	CF15 Polypropylene Mixing
3120-201	Pressure Relief for Diaphragm 1/2" NPT



(*) 2 bar test with a PTFE (Teflon®) diaphragms pump.

AODD CenterFlo CF30



DIMENSIONS INCHES FOR ALUMINUM PUMP											
A	B	C	D	E	F*	G	I	J	K	L	M
8.50	7.44	8.94	6.89	6.06	0.35	7.24	3.72	1" (F)	8.27	3/8"(F)	2.44**
DIMENSIONS INCHES FOR POLYPROPYLENE PUMP											
8.50	8.58	9.06	6.89	6.06	0.31	7.24	3.72	1" (F)	8.33	3/8" (F)	2.44**

*Diameter of the holes for fasteners in each of the four pump feet.
**Flange connection: 4 bolts - M 10 (2.44" between centers).

TECHNICAL DATA	
Air inlet	3/8" NPSM(F)
Fluid inlet port	1/2" NPT(F) 1120-026A, 1120-024 1/2" BSPP(F) for DEF 1120-031A
Fluid outlet port	1/2" NPT(F) 1120-026A, 1120-024 1/2" BSPP(F) for DEF 1120-031A
Max. free flow	28 gal/min (106 l/min)
Air pressure range	22 to 102 psi (1.5 to 7 bar)
Solids in suspension	3/16" (4 mm)
Wetted Materials	
1120-026A and 1120-031A	PTFE Teflon®, Viton®, Polypropylene, Stainless Steel, and Hytrel®
1120-024	Aluminum, Acetal Teflon®, Buna-N, and Stainless Steel
Recommended fluids	
1120-026A	Windshield wash solution
1120-024	Light viscosity fluids, synthetic, mineral oils, Anti-freeze, and used oil
1120-031A	Diesel exhaust fluid
Recommended applications	Fluid dispensing, transfer, DEF, and evacuation
Service Bulletin	SB 1124

** Balcrank does not recommend pumping windshield wash or any other fluid below 100° flash point. Contact Balcrank for additional information.

Fluids & Applications

CenterFlo pumps can handle a wide range of fluids used for vehicle service.

Typical applications are transferring, dispensing, and evacuation up to 28 gal/min. They can be used as stand-alone pumps for transfer applications or as systems pumps that include hose reels.

Fluids

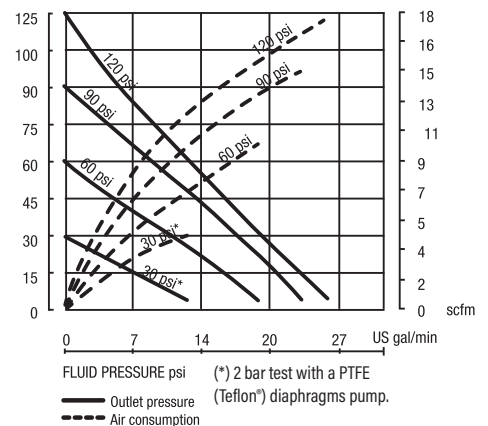
- Anti-freeze (Glycol)
- Light viscosity fluids
- Windshield wash solution
- Synthetic and mineral oils
- DEF
- Used Fluids

Markets Served

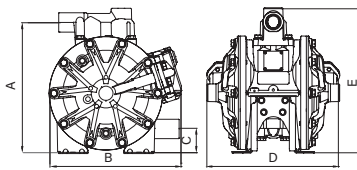
- Car and truck dealers
- Fleets
- Mining and construction
- Railroad and mass transit vehicles
- In-plant
- Lube trucks

Pressure relief valve kit 3120-201 for this pump, not included.

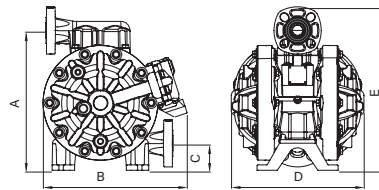
MODELS AVAILABLE	DESCRIPTION
1120-026A	CF30 Polypropylene
1120-024	CF30 Aluminum
1120-031A	CF30 Polypropylene/DEF
3120-201	Pressure Relief for Diaphragm 1/2" NPT



AODD CenterFlo CF50



DIMENSIONS INCHES (MM)				
A	B	C	D	E
11" (278)	11" (280)	2" (52)	11" (281)	12 2/16" (308)



DIMENSIONS INCHES (MM)				
A	B	C	D	E
12 1/4" (311)	12 19/32" (320)	2 1/3" (60)	11" 2/3 (295)	14 1/3" (364)

TECHNICAL DATA	
Air inlet	3/8" NPSM(F)
Fluid inlet port	1" NPT(F) 1120-037 / 1" ANSI flange B16.5 150 lb 1120-038
Fluid outlet port	1" NPT(F) 1120-037 / 1" ANSI flange B16.5 150 lbs 1120-038
Max. free flow	53 gal/min (200 l/min)
Air pressure range	22-102 psi (1.5-7 bar)
Solids in suspension	1/8" (3.2 mm)
Wetted Materials	
1120-037	PTFE (Teflon), Polypropylene, Stainless Steel, Hytrel, FKM
1120-038	Aluminum, Hytrel, Acetal, Buna-N™, Stainless Steel
Recommended Fluids	
1120-037	Windshield wash solution
1120-038	Light viscosity fluids, synthetic, mineral oils, anti-freeze, and used oil
Recommended Applications	Fluid dispensing, transfer, DEF, and evacuation
Service Bulletin	SB 1147

** Balcrank does not recommend pumping windshield wash or any other fluid below 100° flash point. Contact Balcrank for additional information.

Fluids & Applications

CF50 is a high performance 1" AODD pump with many unique features. Similar to all our CF series pumps, the new CF50 utilizes a flow through fluid design that is more air efficient than traditional AODD pumps. Capable of distributing up to 50 gal/min. This equates to higher performance, versatility along with easy serviceability.

- High performance; increased flow rate with minimal air consumption
- Dependability; non-icing air motor
- Versatile; inlet and outlet ports can be oriented to fit the installation/application
- Ease of service; diaphragms and air motor can be serviced with the pump installed without removal.

Fluids

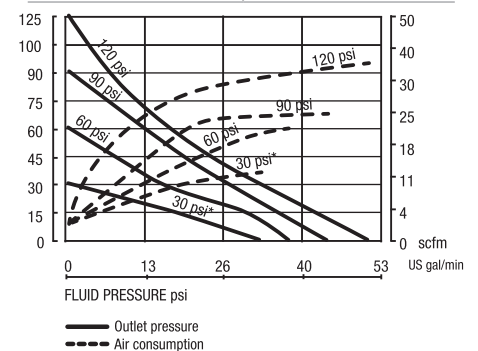
- Used oil
- Used anti-freeze
- Synthetic and mineral based motor oils
- Windshield wash solution

Markets served

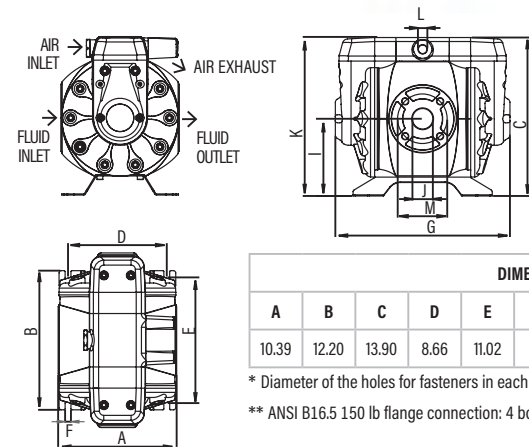
- Car and truck dealers
- Mining and construction
- Fleets
- Railroad and mass transit
- In-plant
- Lube trucks

Pressure relief valve kit 3120-202 for this pump, not included.

MODELS AVAILABLE	DESCRIPTION
1120-037	CF50 Aluminum
1120-038	CF50 Polypropylene
3120-202	Pressure Relief for Diaphragm 1" NPT



AODD CenterFlo CF65



DIMENSIONS INCHES											
A	B	C	D	E	F*	G	I	J	K	L	M
10.39	12.20	13.90	8.66	11.02	0.51	15.35	6.77	11/2"(F)	12.87	1/2"(F)	4.33**

* Diameter of the holes for fasteners in each of the four pump feet.
** ANSI B16.5 150 lb flange connection: 4 bolts - UNC 1/2" - 13 (3.87" between centers)

TECHNICAL DATA	
Air inlet	1/2" NPSM(F)
Fluid inlet port	1 1/2" NPT(F) + ANSI flange B16.5 150 lb
Fluid outlet port	1 1/2" NPT(F) + ANSI flange B16.5 150 lb
Max. free flow	65 gal/min (250 l/mn)
Air pressure range	22-102 psi (1.5-7 bar)
Solids in suspension	1/4" (6 mm)
Wetted Materials	Aluminum, Acetal, Buna-N, Stainless Steel
Recommended fluids	Anti-freeze (Glycol)
Recommended applications	Fluid dispensing, transfer, and evacuation
Service Bulletin	SB 1132

** Balcrank does not recommend pumping windshield wash or any other fluid below 100° flash point. Contact Balcrank for additional information.

Fluids & Applications

CenterFlo pumps can handle a wide range of fluids used for vehicle service. Typical applications are high volume transferring, bulk fill, and evacuation up to 65 gal/min. They can be used as stand-alone pumps for transfer applications or as systems pumps that include hose reels.

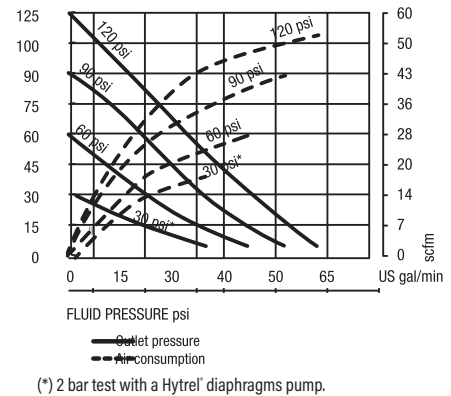
Fluids

- Anti-freeze (Glycol)
- Light viscosity fluids
- Windshield wash solution
- Synthetic and mineral oil
- Used oil and anti-freeze

Markets Served

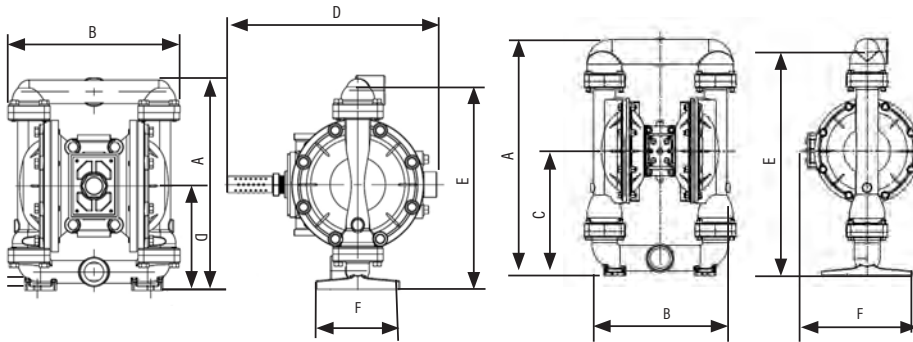
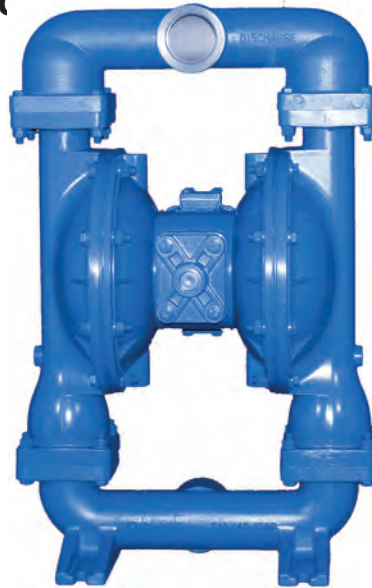
- Car and truck dealers
- Fleets
- Mining and construction
- Railroad and mass transit vehicles
- In-plant
- Lube trucks

MODELS AVAILABLE	DESCRIPTION
1120-033	CF65 Diaphragm Pump
1120-039	CF65 Diaphragm Pump Buna-N™



Pumps

Signature Series Product Selection Matrix



DIMENSIONS INCHES					
A	B	C	D	E	F
12 23/32"	10 1/4"	6 7/32"	12 1/2"	11 27/32"	5"

DIMENSIONS INCHES					
A	B	C	D	E	F
26 3/16"	16 7/8"	13 11/16"	12 19/32"	24 5/8"	10"

TECHNICAL DATA		
	1120-015S	1120-030S
Air inlet	1/2" NPT(F)	3/4" NPT(F)
Fluid inlet port	1" NPT(F)	2" NPT(F)
Fluid outlet port	1" NPT(F)	2" NPT(F)
Max. free flow	45 gal/min (170 l/min)	150 gal/min (586 l/min)
Air pressure range	45-100 psi (3-6.8 bar)	125 (8.5 bar)
Solids in suspension	1/4" (6 mm)	1/4" (6 mm)
Wetted Materials	Nitrile, Neoprene, PTFE, Polypropylene and Polyethylene	Nitrile, PTFE (Teflon), Aluminum, Acetal, and Buna-N™
Recommended fluids	Light viscosity fluids synthetic, mineral oils, and Diesel Fuel	Light viscosity fluids synthetic, mineral oils, Used Oil, and Diesel Fuel
Recommended applications	Fluid dispensing, transfer, and evacuation.	
Service Bulletin	SB 1113	SB 1118

** Balcrank does not recommend pumping windshield wash or any other fluid below 100° flash point. Contact Balcrank for additional information.

Fluids & Applications

These conventional pumps may be used as stand-alone pumps for transfer applications or as system pumps that include hose reels. Model 1120-015S is UL79 listed for pumping: Diesel Fuel, No. 4 Fuel Oils (or lighter), Motor Oil, Kerosene, and Water.

Fluids

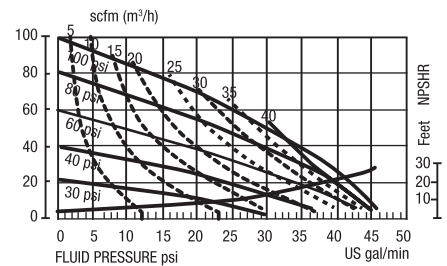
- Light viscosity fluids
- Synthetic and mineral oils
- Diesel Fuel
- Used Fluids

Markets Served

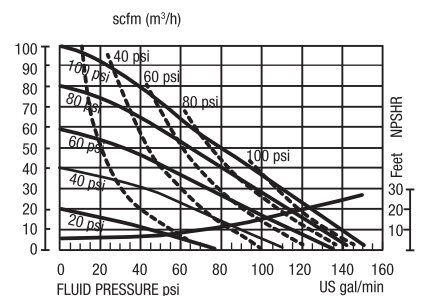
- Car and truck dealers
- Fleets
- Construction
- Mass transit vehicles
- In-plant
- Lube trucks

MODELS AVAILABLE	DESCRIPTION
1120-015S	1" UL Aluminum AODD Pump
1120-030S	2" Aluminum AODD Pump

1120-015S



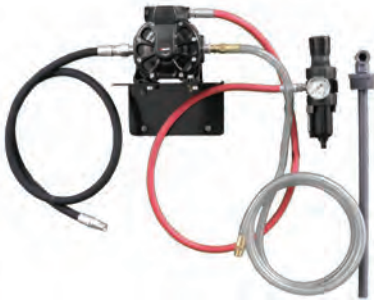
1120-030S



AODD CenterFlo Packages

CF15 Series Wall-Mount Package

Wall mount pumping system for anti-freeze (Glycol) or windshield washer solution, designed for the CF15 series



1121-015 CF15 WALL-MOUNT PACKAGE FOR ANTI-FREEZE & WINDSHIELD WASH SOLUTIONS	
INCLUDES	
1120-023A	Polypropylene CF15 Diaphragm Pump
8134-005	LP Hose Assembly 5' x 3/8"
3260-035	F/R Auto Drain 3/8" NPT(F)
8249-005	MP Hose Assembly 5' x 1/2"
8145-005	LP Suction Rated Hose Assembly 5' x 1/2"
4412-019	CenterFlo AODD Suction Tube Kit
4411-025	Mounting Bracket for AODD Pumps

CF15 Series Mixing Package

Blending pump system for anti-freeze (Glycol) or windshield washer solution, designed for the CF15 mixing.



1121-016 CF15 MIXING PACKAGE FOR BLENDING ANTI-FREEZE & WINDSHIELD WASH SOLUTIONS	
NOTE: both fluids and their resulting solution must be compatible with the pump wetted materials.	
INCLUDES	
1120-028A	Mixing CF15 Diaphragm Pump
8134-005	LP Hose Assembly 5' x 3/8"
3260-035	F/R Auto Drain 3/8" NPT(F)
8249-005	MP Hose Assembly 5' x 1/2"
8146-010	Qty 2 - LP Suction Rated Hose Assembly 10' x 1/2"
4412-019	Qty 2 - CenterFlo AODD Suction Tube Kit
4411-025	Mounting Bracket for AODD Pumps

CF30 Series Accessory Package (does not include pump)

4410-063 CF30 WALL-MOUNT PACKAGE	
INCLUDES	
8134-005	LP Hose Assembly 5' x 3/8"
8264-005	MP Hose Assembly 5' x 3/4"
8181-006	LP Hose Assembly 6' x 1"
3230-019	LP Air Ball Valve 3/8" NPT(F) no bleed
3260-035	F/R Auto Drain 3/8" NPT(F)
4411-025	Mounting Bracket for AODD Pumps

4140-062 EVACUATION PACKAGE FOR OIL DESIGNED FOR THE CF30	
INCLUDES	
8134-005	LP Hose Assembly 5' x 3/8"
8264-005	MP Hose Assembly 5' x 3/4"
8181-006	LP Hose Assembly 6' x 1"
4140-017	Cam-lock Coupler 1"
3230-019	LP Air Ball Valve 3/8" NPT(F) no bleed
3230-022	LP Air Ball Valve 1" NPT(F) no bleed
3260-035	F/R Auto Drain 3/8" NPT(F)
4411-025	Mounting Bracket for AODD Pumps

4140-063 EVACUATION PACKAGE FOR ANTI-FREEZE DESIGNED FOR THE CF30	
INCLUDES	
8134-005	LP Hose Assembly 5' x 3/8"
8264-005	Qty 2 - MP Hose Assembly 5' x 3/4"
4140-044	Cam-lock Coupler 3/4"
3230-019	LP Air Ball Valve 3/8" NPT(F) no bleed
3230-021	LP Air Ball Valve 3/4" NPT(F) no bleed
3260-035	F/R Auto Drain 3/8" NPT(F)
4411-025	Mounting Bracket for AODD Pumps

AODD CenterFlo Packages

CF15 Series Evacuation Package

Evacuation system for used oil or anti-freeze disposal



1121-020 CF15 EVACUATION PACKAGE FOR USED OIL	
INCLUDES	
1120-027	Aluminum CF15 Diaphragm Pump
8134-005	LP Hose Assembly 5' x 3/8"
8249-005	MP Hose Assembly 5' x 1/2"
8145-005	LP Suction Rated Hose Assembly 5' x 1/2"
4140-017	Cam-lock Coupler 1"
3230-019	LP Air Ball Valve 3/8" NPT(F) no bleed
3230-020	LP Air Ball Valve 1/2" NPT(F) no bleed
3260-035	F/R Auto Drain 3/8" NPT(F)
4411-025	Mounting Bracket for AODD Pumps
3120-211	Y-Strainer 1/2" NPT(F)

1121-021 CF15 EVACUATION PACKAGE FOR USED ANTI-FREEZE	
INCLUDES	
1120-027	Aluminum CF15 Diaphragm Pump
8134-005	LP Hose Assembly 5' x 3/8"
8249-005	MP Hose Assembly 5' x 1/2"
8145-005	LP Suction Rated Hose Assembly 5' x 1/2"
4140-044	Cam-lock Coupler 3/4"
3230-019	LP Air Ball Valve 3/8" NPT(F) no bleed
3230-020	LP Air Ball Valve 1/2" NPT(F) no bleed
3260-035	F/R Auto Drain 3/8" NPT(F)
4411-025	Mounting Bracket for AODD Pumps

CF30 Series Evacuation Package

Evacuation system for used oil or anti-freeze disposal



1121-022 CF30 EVACUATION PACKAGE FOR USED OIL	
INCLUDES	
1120-024	Aluminum CF30 Diaphragm Pump
8134-005	LP Hose Assembly 5' x 3/8"
8264-005	MP Hose Assembly 5' x 3/4"
8181-006	LP Hose Assembly 6' x 1"
4140-017	Cam-lock Coupler 1"
3230-019	LP Air Ball Valve 3/8" NPT(F) no bleed
3230-022	LP Air Ball Valve 1" NPT(F) no bleed
3260-035	F/R Auto Drain 3/8" NPT(F)
4411-025	Mounting Bracket for AODD Pumps
3120-219	Y-Strainer 1" NPT(F)

1121-023 CF30 EVACUATION PACKAGE FOR USED ANTI-FREEZE	
INCLUDES	
1120-024	Aluminum CF30 Diaphragm Pump
8134-005	LP Hose Assembly 5' x 3/8"
8264-005	Qty 2 - MP Hose Assembly 5' x 3/4"
4140-044	Cam-lock Coupler 3/4"
3230-019	LP Air Ball Valve 3/8" NPT(F) no bleed
3230-021	LP Air Ball Valve 3/4" NPT(F) no bleed
3260-035	F/R Auto Drain 3/8" NPT(F)
4411-025	Mounting Bracket for AODD Pumps

CF50 Series Evacuation Package

Evacuation system for used oil or anti-freeze disposal



1121-024 CF50 EVACUATION PACKAGE FOR USED OIL	
INCLUDES	
1120-037	Aluminum CF50 Diaphragm Pump
8134-005	LP Hose Assembly 5' x 3/8"
8281-005	MP Hose Assembly 5' x 1"
8182-005	LP Hose Assembly 5' x 1"
4140-017	Cam-lock Coupler 1"
3230-019	LP Air Ball Valve 3/8" NPT(F) no bleed
3230-022	LP Air Ball Valve 1" NPT(F) no bleed
3260-035	F/R Auto Drain 3/8" NPT(F)
4411-036	Mounting Bracket for CF50 AODD Pumps
3120-219	Y-Strainer 1" NPT(F)

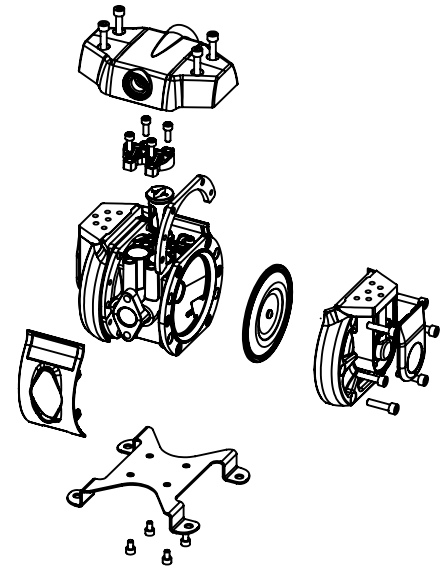
1121-025 CF50 EVACUATION PACKAGE FOR USED ANTI-FREEZE	
INCLUDES	
1120-038	Poly CF50 Diaphragm Pump
8134-005	LP Hose Assembly 5' x 3/8"
8281-005	MP Hose Assembly 5' x 1"
8182-005	LP Hose Assembly 5' x 1"
4140-044	Cam-lock Coupler 3/4"
3230-019	LP Air Ball Valve 3/8" NPT(F) no bleed
3230-021	LP Air Ball Valve 3/4" NPT(F) no bleed
3260-035	F/R Auto Drain 3/8" NPT(F)
4411-036	Mounting Bracket for CF50 AODD Pumps

AODD Pump Accessories

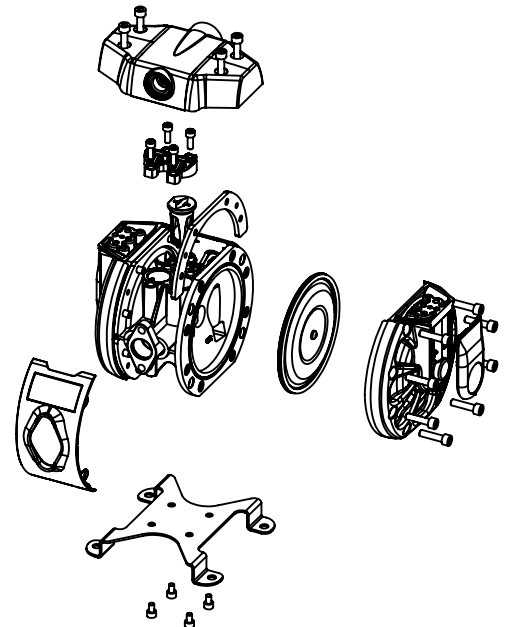
Y-STRAINER - 580 PSI (40 BAR) ALL STRAINERS HAVE 40 MESH		PRESSURE RELIEF KITS			
Y-Strainer		3120-211, 1/2" NPT(F)		3120-201 Pressure Relief for Diaphragm 1/2" NPT 250 psi (17.2 bar) Includes: Valve, Tube 3' x 1/4" and 1/2" nipple	
		3120-212, 3/4" NPT(F)			3120-202 Pressure Relief for Diaphragm 1" NPT 150 psi (10.3 bar) Includes: Valve, Tube 3' x 1/4" and 1" nipple
		3120-213, 1" NPT(F)			
SUCTION LINE-STRAINER - 150 PSI (10 BAR) ALL STRAINERS HAVE 20 MESH		SUCTION TUBES			
Suction Line-Strainer		3120-219, 1" NPT(F)			
DRY BREAK COUPLER & NIPPLE RATED FOR VACUUM OR UP TO 3,000 PSI (207 BAR)		Dry Break Coupler & Nipple		4140-016 Coupler 3/4" NPT(F)	4412-044 1" NPT(M) x 18" - 30° 16 gal drum
				4140-050 Coupler 1" NPT(F)	4412-046 1" NPT(M) x 26" - 30° 55 gal drum
				4140-023 Nipple 3/4" NPT(F)	4412-045 1" NPT(M) x 21" - 30° 165/280 gal bench tank
				4140-051 Nipple 1" NPT(F)	4412-048 1" NPT(M) x 30" - 30° 165/280 gal bench tank double tap
			4412-047 1" NPT(M) x 28" - 30° 250 gal bench tank double tap		
CAM-LOCK COUPLER & NIPPLE RATED FOR 250 PSI (17 BAR)		Cam-Lock Coupler & Nipple		4140-044 Coupler 3/4" NPT(F)	4412-051 1" NPT(M) x 42" - 30° 275/330 gal horizontal obround double tap
				4140-017 Coupler 1" NPT(F)	4412-052 1" NPT(M) x 60" - 30° 330 gal vertical obround
				4140-054 Nipple 3/4" NPT(F)	4412-049 1" NPT(M) x 32" - 30° 275 gal tote
				4140-055 Nipple 1" NPT(F)	4412-050 1" NPT(M) x 39" - 30° 330 gal tote
				4140-045 Nipple 3/4" NPT(M)	
				4140-018 Nipple 1" NPT(M)	
				4140-046 Dust Cap 3/4"	
				4140-019 Dust Cap 1"	
				4140-052 Dust Plug 3/4"	
				4140-053 Dust Plug 1"	
		Auto Shut-off Controls (SB 4222)		4520-001 Overfill pump control, auto shut-off, non-electric, sensing tube, pump controller	3230-018 Ball valve, 1/4", 580 psi (40 bar)
				4520-002 Overfill pump control with alarm, auto shut-off, non-electric, sensing tube, pump controller	3230-019 Ball valve, 3/8", 580 psi (40 bar)
				3230-020 Ball valve, 1/2", 580 psi (40 bar)	
			3230-021 Ball valve, 3/4", 580 psi (40 bar)		
			3230-022 Ball valve, 1", 580 psi (40 bar)		
				3230-009 Shut-off valve, 3/8" NPT(F), 200 psi (13.7 bar)	
			3230-010 Shut-off valve, 1/2" NPT(F), 200 psi (13.7 bar)		
			3230-011 Shut-off valve, 3/4" NPT(F), 200 psi (13.7 bar)		

AODD Pumps Repair Kits (CenterFlo)

CF10		
PUMP MODELS	KIT NUMBER	DESCRIPTION
CF10 AODD PUMPS - 1120-029A, 1120-034		
1120-029A	833206	Air valve kit
1120-029A	833207	Stroke sensor kit
1120-029A	833236	Check Ball kit
1120-029A	833209	Ball Seats, O-rings, ball guides
1120-029A	833238	Diaphragms kit (Prior to 2/1/2013)
1120-029A	833337	Diaphragms kit (After to 2/1/2013)
1120-029A	833331	Bushing, seal, push rod (Prior to 2/1/2013)
1120-029A	833336	Bushing, seal, push rod (After to 2/1/2013)

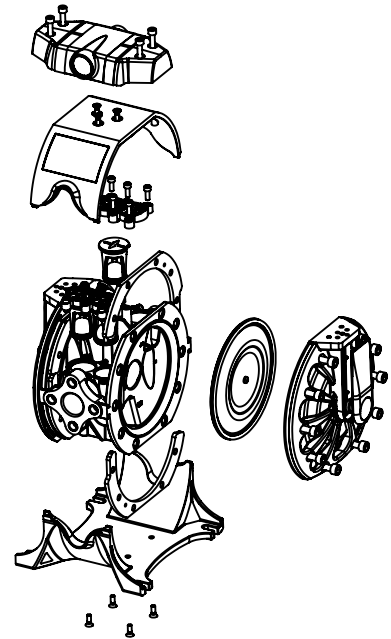


CF15		
PUMP MODELS	KIT NUMBER	DESCRIPTION
CF15 AODD PUMPS - 1120-023A, 1120-025A, 1120-027, 1120-028A		
1120-023A, 1120-025A, 1120-027, 1120-028A	833206	Air valve kit
1120-023A, 1120-025A, 1120-027, 1120-028A	833207	Stroke sensor kit
1120-023A, 1120-025A	833208	Check Ball kit
1120-027, 1120-028A	833236	Check Ball kit
1120-027, 1120-028A	833330	Ball Seats, O-rings, ball guides
1120-023, 1120-025A, 1120-027, 1120-028A	833209	Ball Seats, O-rings, ball guides
1120-023, 1120-025A, 1120-028A	833210	Bushing, seal, push rod (Prior to 2/1/2013)
1120-023, 1120-025A, 1120-028A	833332	Bushing, seal, push rod (After to 2/1/2013)
1120-027	833237	Bushing, seal, push rod
1120-027	833333	Diaphragms kit (After to 2/1/2013)
1120-023, 1120-025A, 1120-027, 1120-028A	833211	Diaphragms kit (Prior to 2/1/2013)
1120-023, 1120-025A, 1120-027, 1120-028A	833338	Diaphragms kit (After to 2/1/2013)
1120-023, 1120-025A, 1120-027, 1120-028A	833341	Retrofit Kit (Updates pumps prior to 2/1/2013)

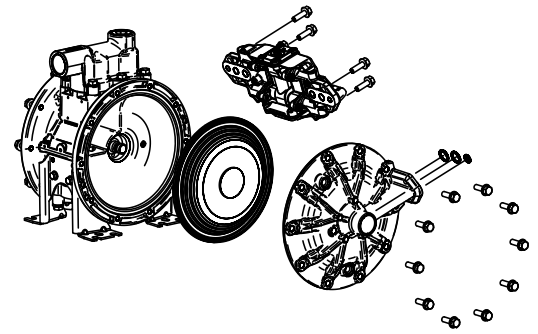


AODD Pumps Repair Kits (CenterFlo)

CF30		
PUMP MODELS	KIT NUMBER	DESCRIPTION
CF30 AODD PUMPS 1120-024, 1120-026A, 1120-031A		
1120-024, 1120-026A, 1120-031	833212	Air valve kit
1120-024, 1120-026A, 1120-031	833207	Stroke sensor kit
1120-026A, 1120-031	833233	Check Ball kit
1120-024	833213	Check Ball kit
1120-026A, 1120-031	833234	Ball Seats, O-rings, ball guides
1120-024	833214	Ball Seats, O-rings, ball guides
1120-026A, 1120-031	833235	Bushing, seal, push rod (Prior to 2/1/2013)
1120-026A, 1120-031	833335	Bushing, seal, push rod (After to 2/1/2013)
1120-024	833334	Bushing, seal, push rod (After to 2/1/2013)
1120-024	833215	Bushing, seal, push rod (Prior to 2/1/2013)
1120-024, 1120-026A, 1120-031	833339	Diaphragms kit (After to 2/1/2013)
1120-024, 1120-026A, 1120-031	833342	Retrofit Kit (Updates pumps prior to 2/1/2013)

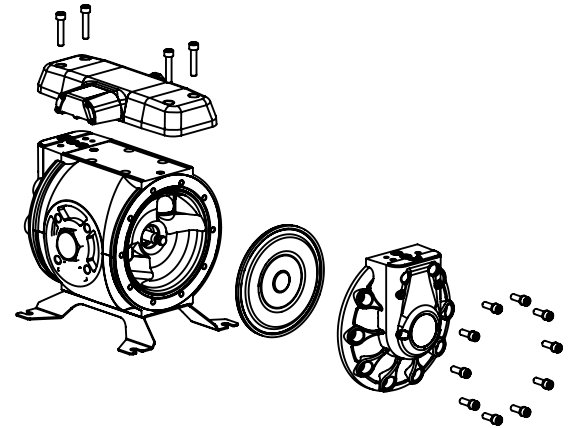


CF50		
PUMP MODELS	KIT NUMBER	DESCRIPTION
1120-037	833692	Air Valve Kit
1120-038	833693	Stroke sensor kit
1120-037	833698	Bushing, seal, push rod (Acetal/Buna-N/SS)
1120-038	833699	Bushing, seal, push rod (PTFE/Viton/SS)
1120-037	833696	Ball Seats/Seal (Buna-N)
1120-038	833697	Ball Seats/Seal (PP/Viton)
1120-037	833694	Check Ball kit (Acetal)
1120-038	833695	Check Ball kit (PTFE)
1120-037	833700	Diaphragms kit (Buna-N)
1120-038	833436	Diaphragms kit (Hytrel)



AODD Pumps Repair Kits (CenterFlo and Conventional)

CF65		
PUMP MODELS	KIT NUMBER	DESCRIPTION
CF65 AODD PUMPS - 1120-033, 1120-0XX		
1120-033	833431	Air valve kit
1120-033	833432	Stroke sensor kit
1120-033	833433	Check Ball kit
1120-033	833434	Ball Seats, O-rings, ball guides
1120-033	833435	Bushing, seal, push rod
1120-033	833436	Diaphragms kit
1120-037	833709	KIT, BALLS, BUNA-N, CF65
1120-037	833710	KIT, BALL SEAT/SEAL/CAGE, CF65 BUNA-N



CONVENTIONAL AODD PUMPS		
PUMP MODELS	KIT NUMBER	DESCRIPTION
ALUMINUM AODD PUMPS - 1120-015S, 1120-030S		
1120-015S	833103	Air seal kit
1120-015S	832973	Air assembly kit
1120-015S	932974	Fluid seal kit
1120-030S	833175	Air seal kit
1120-030S	833174	Air assembly kit
1120-030S	833173	Fluid seal kit

