



OVERFILL PREVENTION VALVES

Features

Designed for AST pressure fill applications*, the C&B 4X6 is ULC Listed and UL Listed. The C&B 4X6 is rated for up to 100 psi fuel delivery and has a flow rate of over 300 GPM at 40 psi. Outstanding design features are mechanical operation, use in remote fill applications and provides positive shut off of fuel delivery with no line shock. The adjustable collar allows custom installation to any type of AST and allows various fuel shut off levels. Materials used in the construction of the C&B 4X6 include hard anodized 356-T6 Aluminum, Stainless Steel rods, Closed Cell Polyurethane float and Buna gaskets.



#1228 C&B 4X6

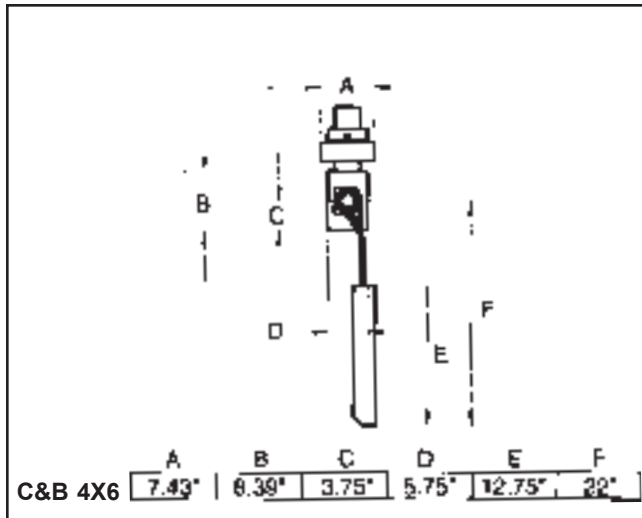
U.S. Patent #5,531,247

Part No.	Size	Wt.lbs
1228-03-60XX	4"	25.0

Standard Fill Tube Sizes

Part No.	Length
1228-03-6010	10"
1228-03-6016	16"
1228-03-6020	20"
1228-03-6024	24"

Other lengths available, at additional cost



C&B 4X6 Options

Part No.	Description
Cam Lock Connection System:	
01228-03-6053	4" Cam Lock Adaptor
01228-03-6054	4" Dust Cap
Drop Tubes:	
01228-03-6148	4" Flanged Aluminum Drop Tube 4'
01228-03-6172	4" Flanged Aluminum Drop Tube 6'
01228-03-6196	4" Flanged Aluminum Drop Tube 8'
01228-03-6199	4" Flanged Aluminum Drop Tube 10'

*Applicable for fuels other than #5 and #6 fuel oils.
Consult factory for applications other than fuel.



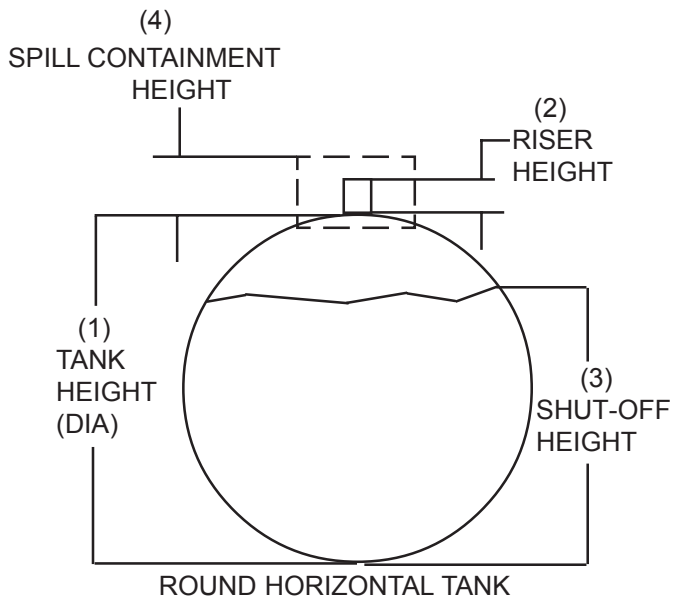
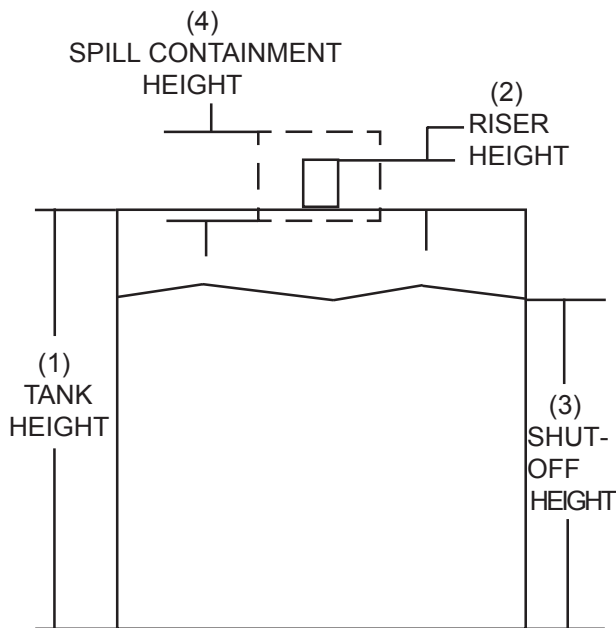
Clay & Bailey Mfg. Co. To: _____ Fax: _____

Overfill Prevention Ordering Worksheet From: _____

ROUND HORIZONTAL TANK HEIGHT	% SHUT-OFF	
	90% HEIGHT	95% HEIGHT
36"	30"	33"
40"	34"	36"
42"	35"	38"
48"	41"	43"
60"	51"	54"
72"	61"	65"
84"	71"	76"
96"	81"	87"
108"	91"	98"
120"	101"	109"

**2", 3", AND 4" FILL LIMITERS'
WORK SHEET FOR FILL PIPE
LENGTH**

RECTANGULAR TANK HEIGHT	%SHUT-OFF	
	90% HEIGHT	95% HEIGHT
36"	32"	---
40"	36"	---
42"	38"	40"
48"	43"	46"
60"	54"	57"
72"	65"	68"
84"	77"	82"
96"	88"	93"
108"	97"	103"
120"	108"	114"



PLEASE COMPLETE THIS INFORMATION
USING DRAWINGS & CHARTS ON THIS PAGE

RECTANGULAR OR ROUND TANK? _____
 VERTICAL OR HORIZONTAL? _____
 HEIGHT OF PRIMARY TANK?(1) _____
 LENGTH OF 4" NIPPLE FROM PRIMARY TANK?(2) _____
 SHUT-OFF HEIGHT?(3) _____
 HEIGHT OF SPILL CONTAINMENT BOX?(4) _____

OPTIONS:

- INCLUDE DROP TUBE _____
- INCLUDE DRY BREAK ADAPTOR _____
- INCLUDE DRY BREAK COUPLER _____
- INCLUDE DRY BREAK CAP _____
- VITON GASKETS (BUNA-N STD.) _____