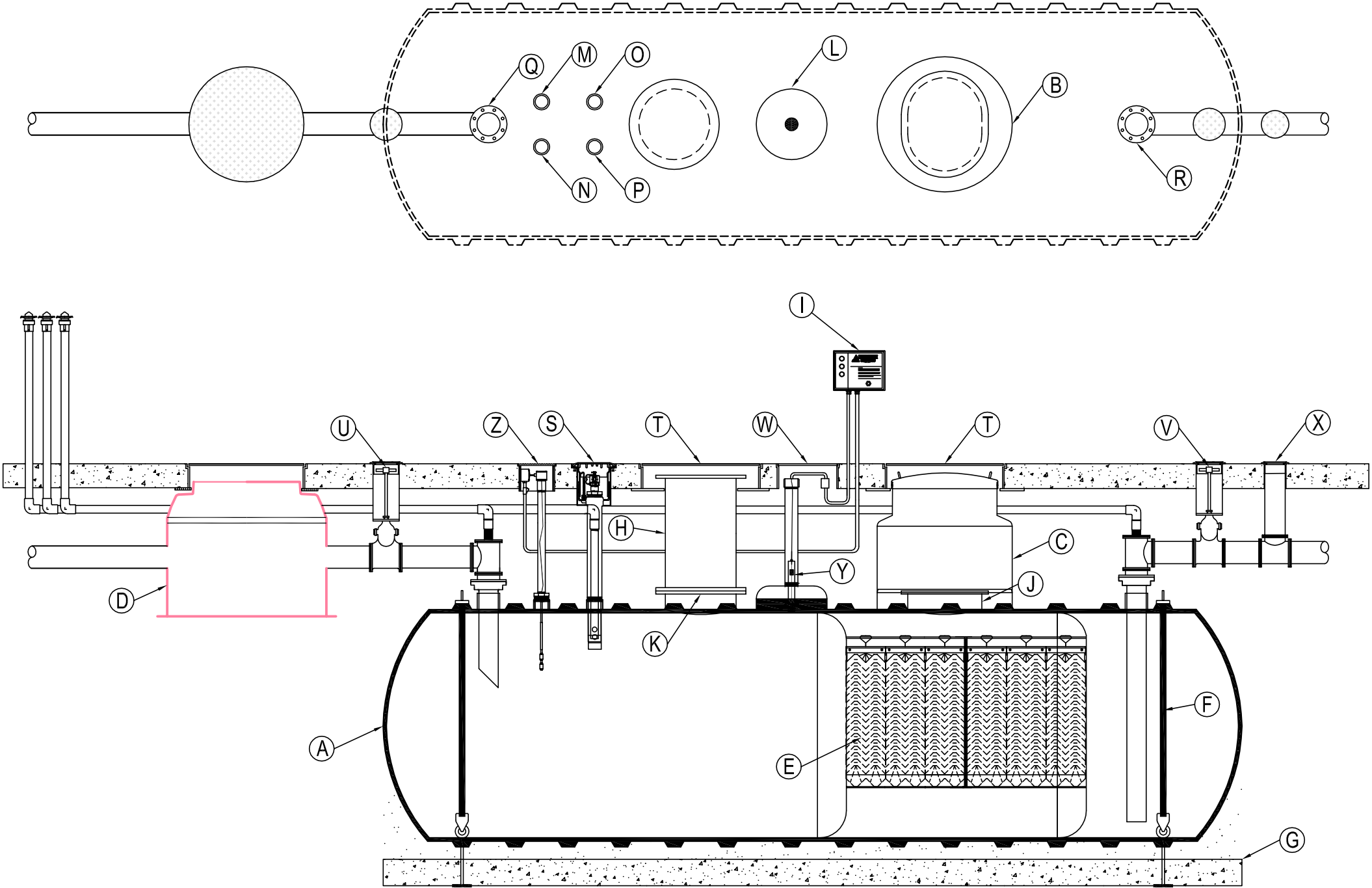


MARK	QTY	SIZE	EQUIPMENT LISTING	MARK	QTY	SIZE	EQUIPMENT LISTING	MARK	QTY	SIZE	EQUIPMENT LISTING
A	1	6'	HYDROSTATIC DOUBLE WALL TANK	J	1	29"	OVAL FLANGED MANWAY	S	1*	14"	SPILL CONTAINMENT MANHOLE
B	1	42"	SINGLE WALL CONTAINMENT COLLAR	K	1	22"	FLANGED MANWAY	T	2*	36"	WATER TIGHT MANHOLE
C	1	42"	SINGLE WALL RTS WATER TIGHT TURBINE SUMP	L	1	R14	HYDROSTATIC TANK RESERVOIR	U	1*	TBD	INLET GATE VALVE
D	1	48"	FIBERGLASS DROP OUT BOX	M	1	4"	OIL INTERFACE GAUGE	V	1*	TBD	OUTLET GATE VALVE
E	TBD	12"	COALESCER PLATE PACKS	N	1	4"	SPARE/GAUGE	W	1*	18"	MANHOLE
F	2		HOLD DOWN SPLIT STRAP ASSEMBLY	O	1	4"	PRIMARY TANK VENT	X	1*	8"	EFFLUENT MONITOR OPENING MANHOLE
G	2	20'	12" x 12" x 20' CONCRETE DEADMAN ANCHORS	P	1	4"	OIL DRAW OFF	Y	1*	R14	HYDROSTATIC TANK RESERVOIR SENSOR
H	1	22"	22" x 36" FIBERGLASS MANWAY EXTENSION	Q	1	TBD	INLET	Z	2*	12"	MANHOLE
I	1*		CONTROL PANEL	R	1	TBD	OUTLET	NOTE: * SUPPLIED BY OTHERS			



TYPICAL ILLUSTRATION DRAWING
(6') 4,000 OWS ULCSI-10 DOUBLE-WALL TANK

THIS DIAGRAM IS THE PROPERTY OF CONTAINMENT SOLUTIONS, INC., AND IS FOR ILLUSTRATION PURPOSES ONLY. IT IS NOT TO BE RELIED UPON FOR ANY OTHER PURPOSE. NO WARRANTY OF MERCHANT ABILITY OF FITNESS FOR A PARTICULAR PURPOSE OR OF ANY OTHER KIND, EXPRESSED OR IMPLIED IS HEREBY MADE. COPYRIGHT © 2010 CONTAINMENT SOLUTIONS, INC. ALL RIGHTS RESERVED.