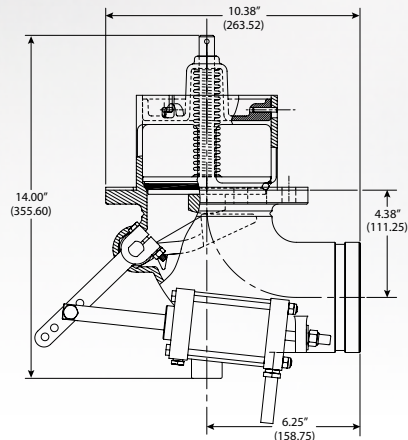


Air Assisted 90 Degree Emergency Valve (Victaulic™) & Parts List

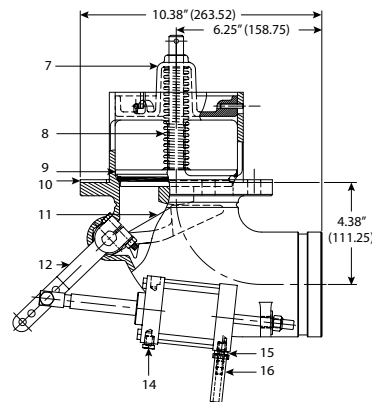
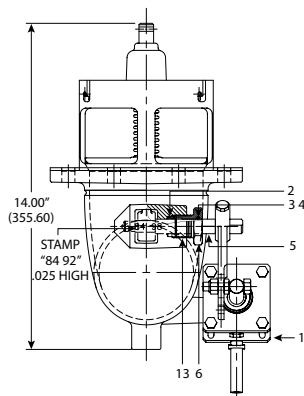
Air assisted emergency valves make product handling safer and installation more convenient. The emergency valve has a shear groove that meets 49 CFR 179.345-7. The seat of the valve is located inside of the tank shell as required by DOT regulations. One valve has the capability to be converted to either right or left hand control.



880-432-01



Model Unit	880-432-01
Weight (Pounds/Kilograms)	13.0/5.9



#	Part Name	Part Number
1	Emergency Valve Air Cylinder	880-350-02
2	4" Victaulic™ Emergency Valve Body	880-429-01
3	3/16" SYN PTFE Packing	1135801
4	O-ring FLC #2-114	1103920
5	Spirol Retaining Ring	1109008
6	Cam Shaft	880-241-01

#	Part Name	Part Number
7	Stuffing Box Nut	880-242-01
8	Emergency Valve Retainer Assembly	880-264-01
9	Poppet Spring	1135701
10	Poppet Assembly	880-263-01
11	Emergency Valve Sump Gasket	1138801
12	Cam Lever Assembly	880-265-01
13	Fusible Metal Pipe Plug, 1/8-27" NPT	1152601
14	Male Push-on Hose Fitting	1149401
15	Rubber Hose - Push-on Fitting	880-159-01

Part Number	Description
880-432-01	4" Standard Victaulic™ Outlet Seal with External Air Cylinder

