

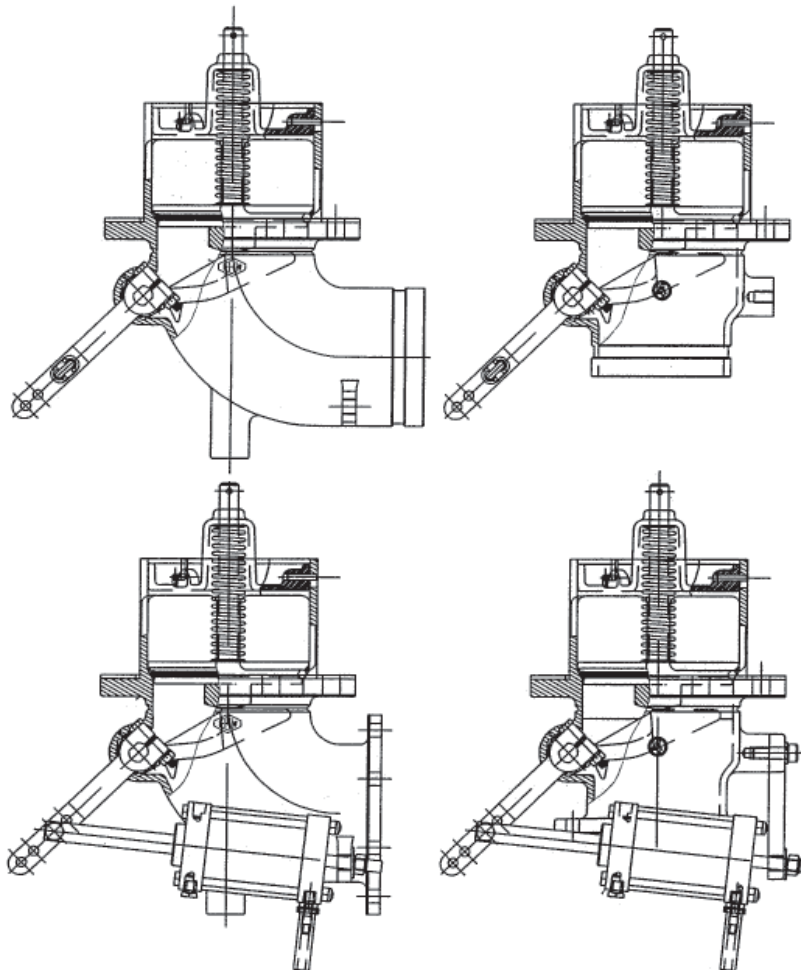


# Franklin Fueling Systems

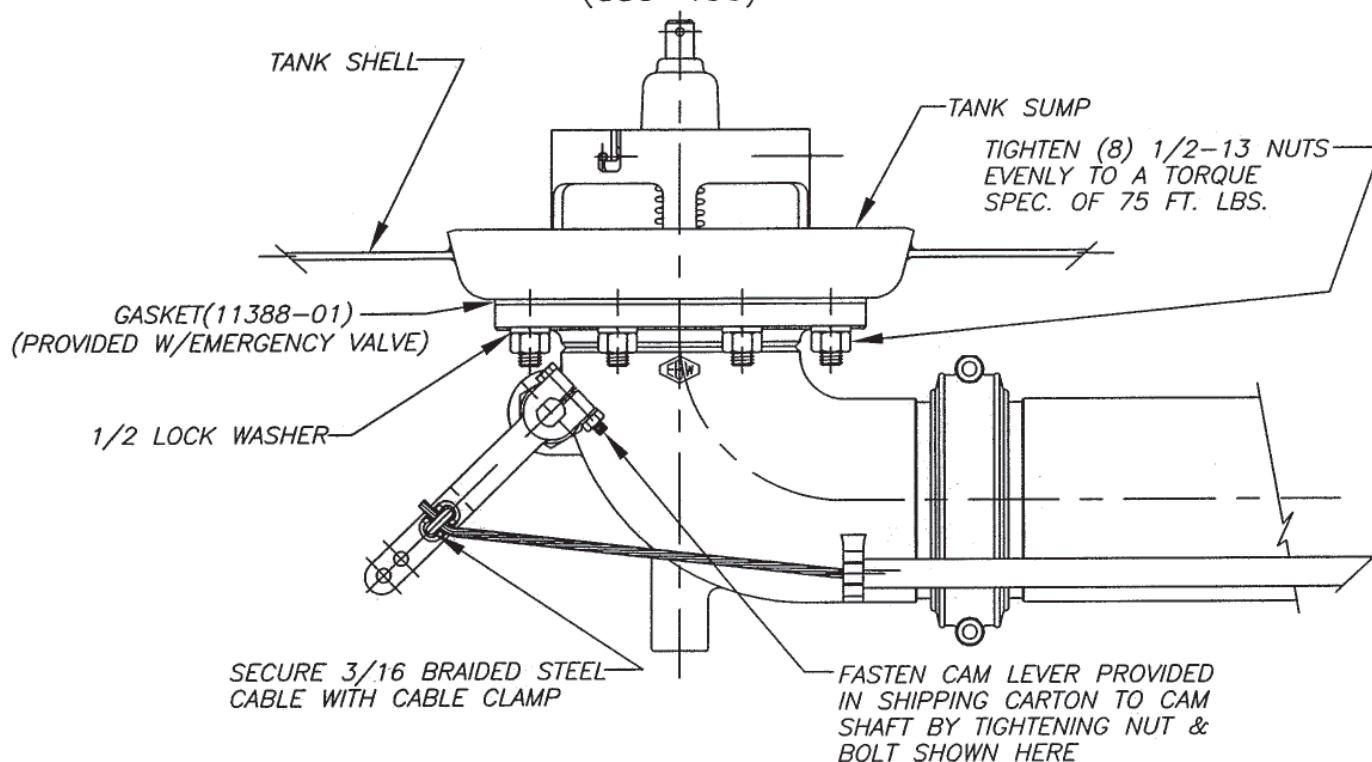
## Tank Truck Emergency Valve

### Installation Instructions

880-430, 880-431, 880-432, 880-433  
880-451, 880-452, 880-453, 880-454

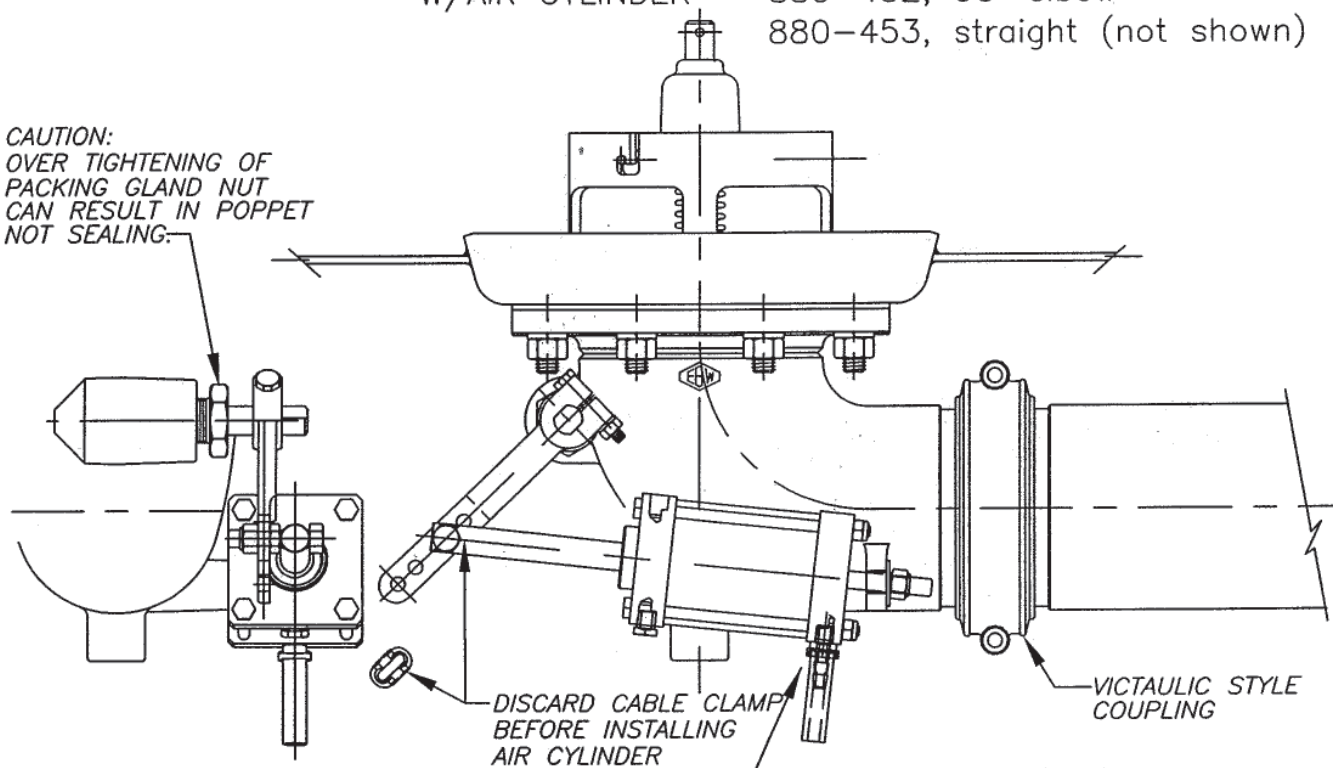


EMERGENCY VALVE- 4" VICTAULIC  
(880-430)



EMERGENCY VALVE- 4" VICTAULIC  
W/AIR CYLINDER 880-432, 90° elbow  
880-453, straight (not shown)

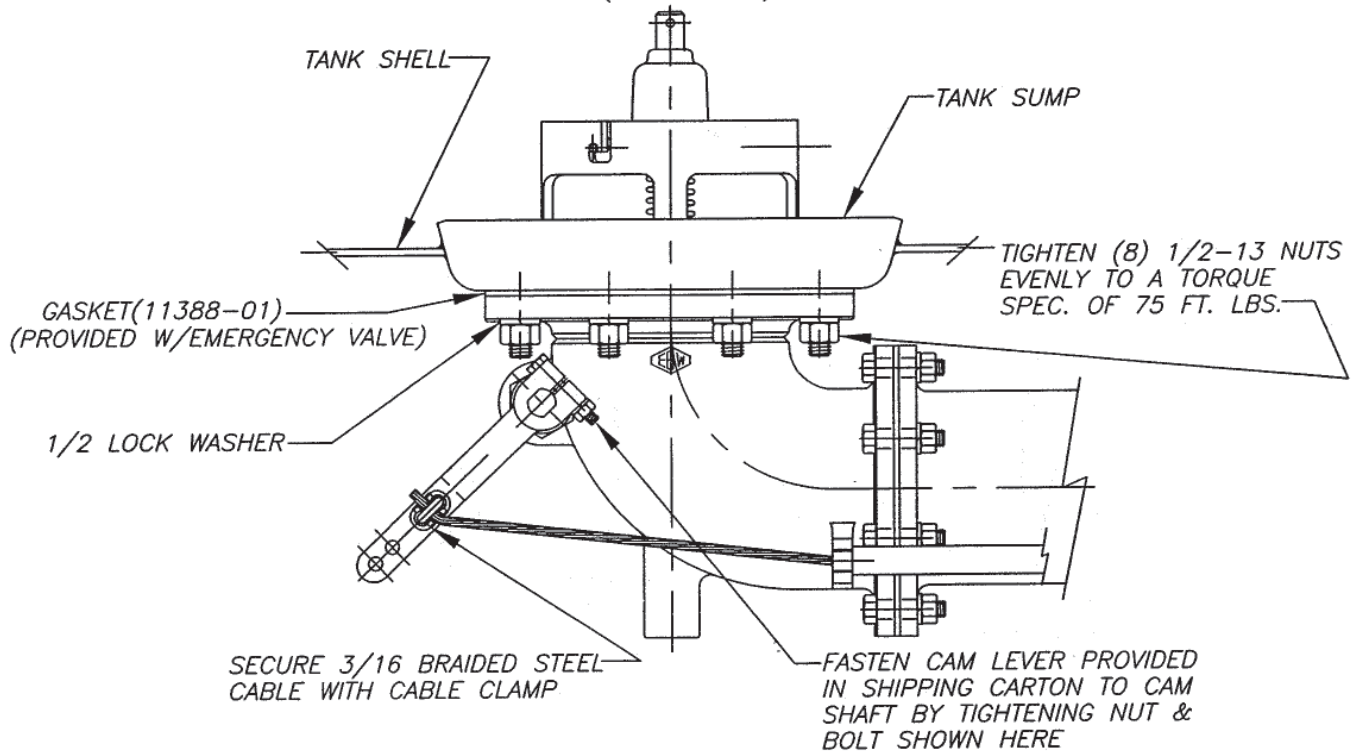
CAUTION:  
OVER TIGHTENING OF  
PACKING GLAND NUT  
CAN RESULT IN POPPET  
NOT SEALING.



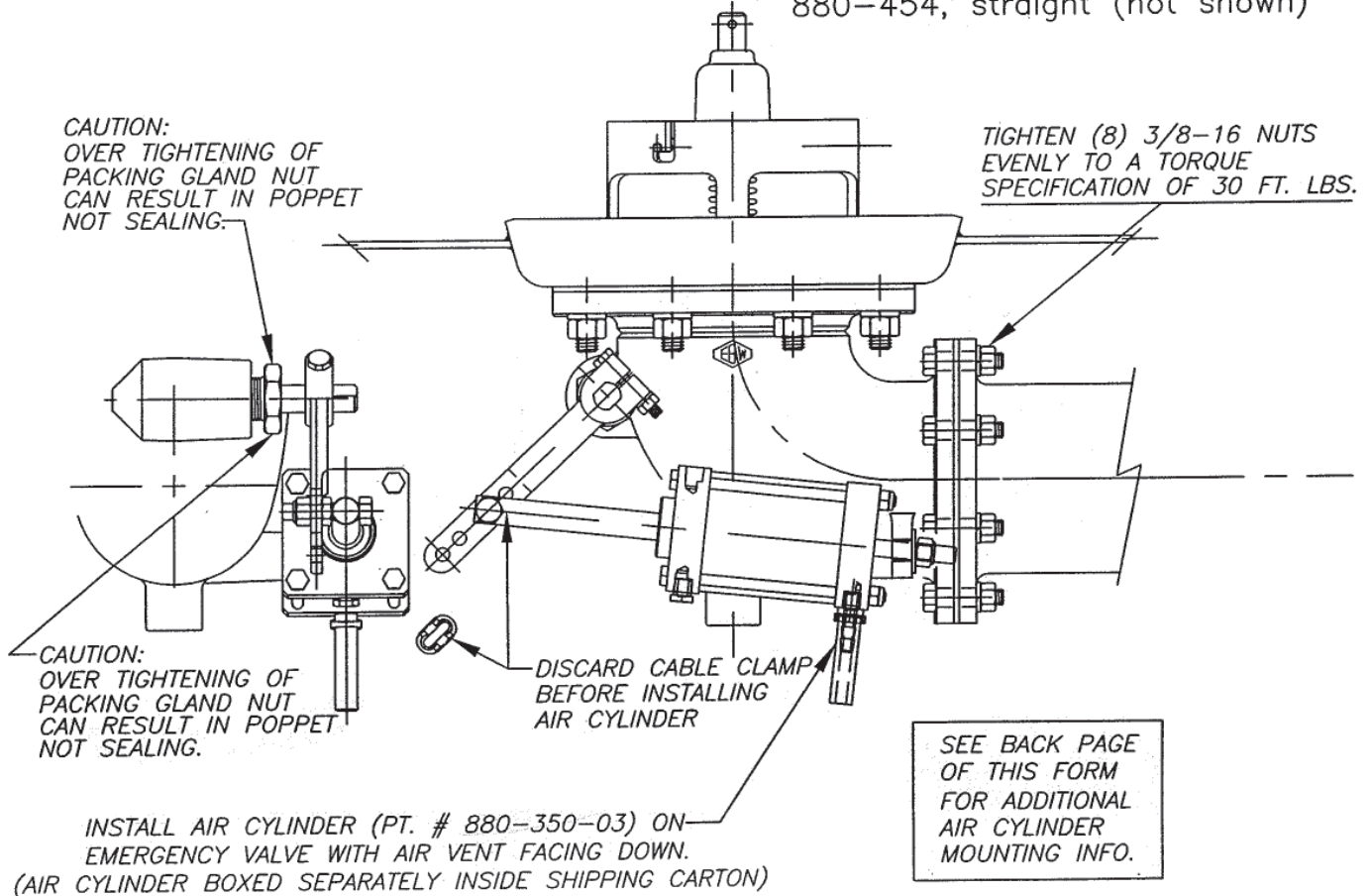
INSTALL AIR CYLINDER (PT. # 880-350-03) ON  
EMERGENCY VALVE WITH AIR VENT FACING DOWN.  
(AIR CYLINDER BOXED SEPARATELY INSIDE SHIPPING CARTON)

SEE BACK PAGE  
OF THIS FORM  
FOR ADDITIONAL  
AIR CYLINDER  
MOUNTING INFO.

EMERGENCY VALVE- 4" FLANGED  
(880-431)



EMERGENCY VALVE- 4" FLANGED  
W/AIR CYLINDER 880-433, 90° elbow  
880-454, straight (not shown)

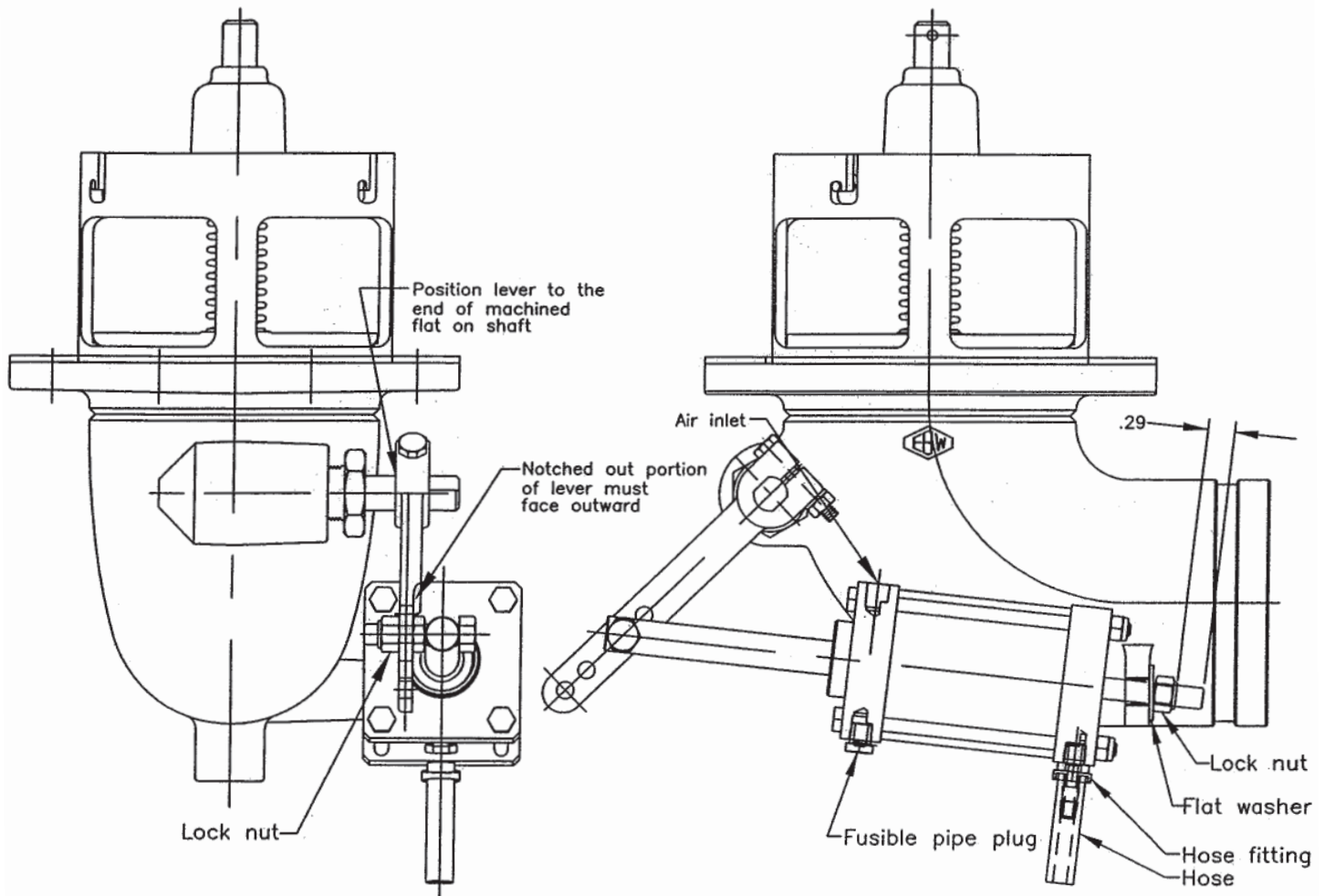


# EMERGENCY VALVE— 4" AIR CYLINDER OPERATED

## MODEL NUMBERS 880-432, 880-433, 880-453 & 880-454

### (90° ELBOW & STRAIGHT MODELS)

(880-432 model shown below)



1. Thread push-on hose fitting into exhaust port of air cylinder and tighten, next push hose onto fitting.
2. Coat threads of fusible plug with pipe sealant and tighten plug into bottom of rod end cap.
3. Position lever on shaft as shown and tighten fasteners.
4. Thread 3/8 bolt (affixed to rod end) into the tapped hole on lever. Fasten 3/8 lock nut on the opposite side of the lever.
5. Compress cylinder as to allow the threaded stud to pass thru mounting boss. Position flat washer on stud and thread 3/8 locknut .29 from end of stud as shown.



**Franklin Fueling Systems**

3760 Marsh Road  
Madison, WI 53718, U.S.A.  
Tel: +1 608 838 8786  
Tel: USA & Canada 1 800 225 9787  
Tel: Mexico 001 800 738 7610  
[www.franklinfueling.com](http://www.franklinfueling.com)