

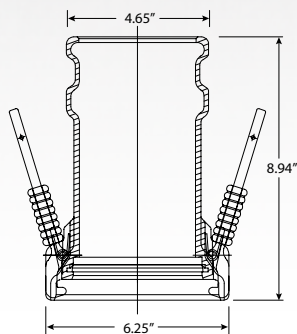
Side Seal Adapter

The Side Seal Adapter is designed to give flexibility to top seal drop elbows. Your 4" top seal delivery elbow can now be used on a side 4" seal fill adapter. You don't have to bring a separate side seal elbow, which reduces cost and the number of fittings required on your truck.

Two lever clamps secure the adapter to the station's side seal fitting and allow a 4" elbow to attach to the adapter. Special locking rings prevent accidental cam arm release during filling. Cast aluminum makes the side seal adapter light and strong. The specially designed seal gives you the added insurance that no leaks will occur.

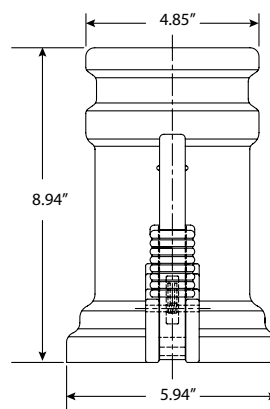
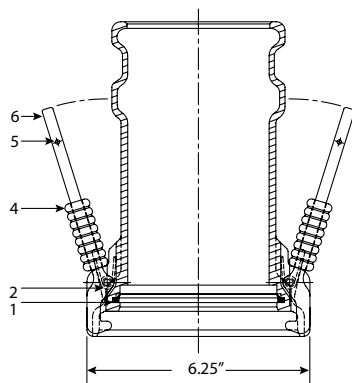


880-445-01



MODEL UNIT	880-445-01
Weight (Pounds/Kilograms)	10.0/4.58

Side Seal Adapter Parts List



#	Part Name	Part Number
1	Seal	881-202-01
2	Release Lever Spring	881-103-01
4	Release Lever Interlock	881-201-00

#	Part Name	Part Number
5	Pin, 0.125 x 0.875", Groove Type "E"	11459-01
6	Release Lever	881-200-01

Part Number	Description
880-445-01	Side Seal Adapter