

Operating Instructions

Series FE9000 Fuel Hose Reels

Low Pressure Model Numbers:

FE9200 OLP FE9300 OLP
FE9350 OLP FE9400 OLP
FE9450 OLP



Dimensions

| | | |
|--|---|---------|
| A technical drawing of the fuel hose reel showing dimensions A through J. Dimension A is the overall width, B is the width of the base, C is the height of the base, D is the height of the reel, E is the height of the base from the ground, F is the length of the reel, G is the length of the base, H is the height of the reel from the base, and J is the height of the reel from the ground. | A | 26 1/4" |
| | B | 24 1/8" |
| | C | 4 3/4" |
| | D | 12" |
| | E | 7 3/4" |
| | F | 22 1/4" |
| | G | 12 1/4" |
| | H | 13 7/8" |
| | J | 26 3/8" |

Four 7/16" diameter mounting holes

SAFETY

1. Do not use reel at higher pressures or temperatures than listed on the back of this bulletin.
2. Remove all spring tension before beginning disassembly process.
3. Reel spring motor case is permanently sealed. Any attempt to remove the spring motor may cause serious injury.

INSTALLATION:

The swivel union is packed separately in the reel carton, use teflon tape to assure a satisfactory seal. A flexible hose connection must be used between the hose reel inlet and the source of supply to prevent possible misalignment and binding. Non flexible connections will void the warranty, pressure rating of inlet hose must be equal to or more than the pressure rating of the reel. Consult factory for proper spring when installing reels above 16 ft.

LUBRICATION:

Hose reel spring and bearings are factory lubricated and require no further lubrication.

REPLACING HOSE:

1. Wind spool flange clockwise-facing swivel-until spring is tight.
2. Back off three turns and latch.
3. Insert hose through roller guide.
4. Connect hose fitting to female outlet ell.

ADJUSTMENTS:

To adjust spring tension, add or remove wraps of hose from the spool, one wrap at a time until desired tension is obtained.

REPAIRS:

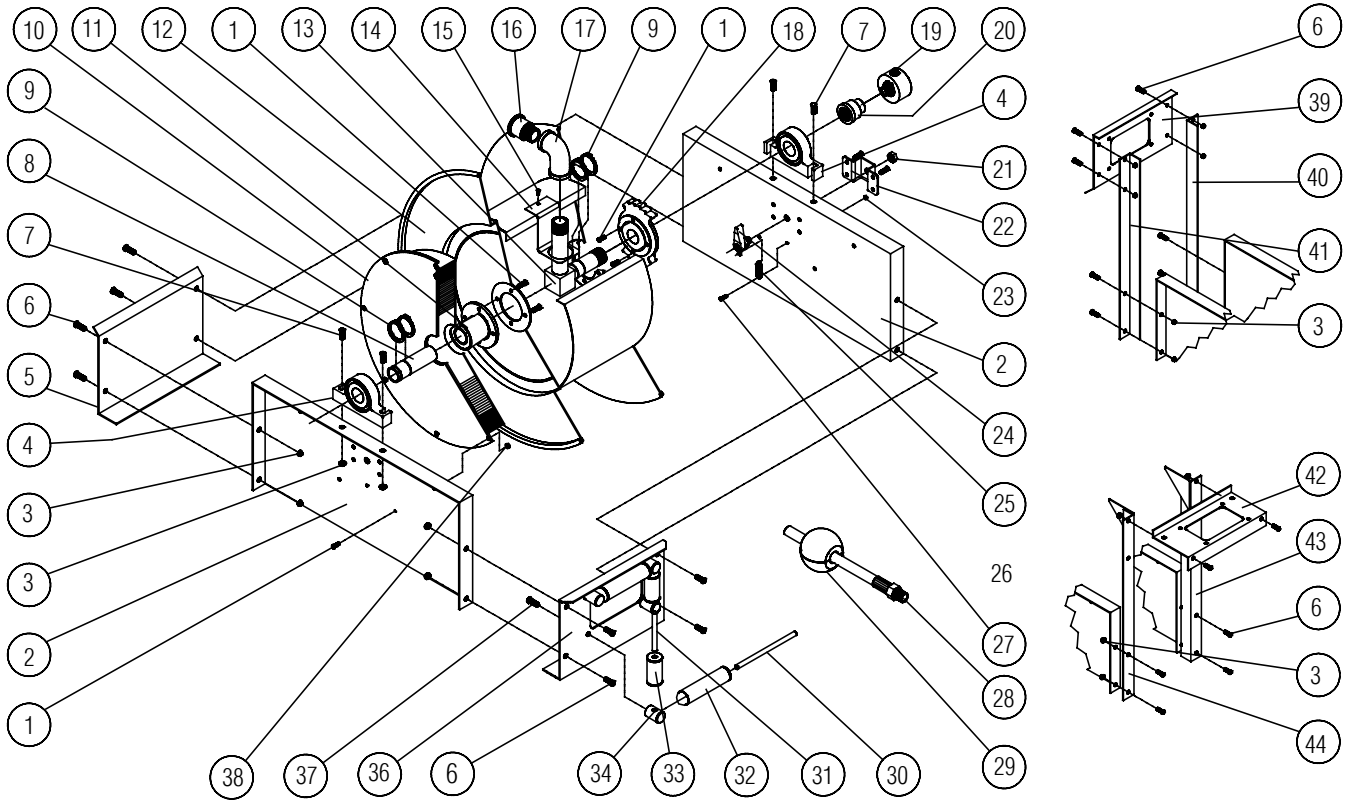
Extensive repairs should be performed only by an authorized serviceman or factory to avoid damage which may void your warranty. Remove all spring tension before beginning disassembly process.

MODIFICATION:

Hose latching mechanism can be removed for constant tension applications.

Form# 613-193A Rev: 9/2012

Series FE9000 Fuel Hose Reels



| Item # | Description | # Req | FE9200 OLPBW | Item # | Description | # Req | FE9200 OLPBW |
|--------|---------------------------|-------|--------------|--------|--------------------------|-------|--------------|
| 1 | 1/4-20 x 1/2" hex screw | 16 | S2-41 | 24 | Latch pawl assembly | 1 | 600454 |
| 2 | Side frame | 2 | 270009 | 25 | Latch spring | 1 | 260067-1 |
| 3 | 3/8-16 hex flange nut | 12 | S281-6 | 26 | Latch bushing | 1 | 400012 |
| 4 | Pillow block | 2 | 600416 | 27 | 10-32 x 7/8" screw | 1 | S20-110 |
| 5 | End frame support | 1 | 270012 | 28 | Hose assembly | 1 | None |
| 6 | 3/8-16 x 5/8" mach. screw | 8 | S44-2 | 29 | Hose bumper assembly | 1 | None |
| 7 | 3/8-16 x 1 3/4" screw | 4 | S44-8 | 30 | Guide roller pin - long | 2 | 270016 |
| 8 | Support shaft | 1 | 260899 | 31 | Guide roller pin - short | 2 | 270015 |
| 9 | Snap ring | 6 | S140-34 | 32 | Guide roller | 2 | 262436-5.468 |
| 10 | Spring case assembly | 1 | 600413-1 | 33 | Guide roller | 2 | 262436-2.968 |
| 11 | Spring arbor | 1 | 260888 | 34 | Guide roller post | 4 | 270014 |
| 12 | Spool assembly | 1 | 600415 | 36 | Hose guide roller plate | 1 | 270011 |
| 13 | Inlet tube | 1 | 260893 | 37 | 5/16-18 x 1/2" hex screw | 4 | S2-51 |
| 14 | Hose outlet support | 1 | 270029 | 38 | 1/4-20 hex nut | 8 | S281-4 |
| 15 | #10 x 3/8" self tap screw | 1 | S32-136 | 39 | Guide roller plate SW | 1 | 270045 |
| 16 | Reducing bushing | 1 | 300080 | 40 | SW support bracket | 1 | 270043 |
| 17 | 90° female NPT ell | 1 | 270028 | 41 | SW support bracket | 1 | 270042 |
| 18 | Latch ratchet | 1 | 260889 | 42 | Guide roller plate TW | 1 | 270044 |
| 19 | Swivel assembly | 1 | 600888-2 | 43 | TW support bracket | 1 | 270041 |
| 20 | Reducing coupling | 1 | S289-5 | 44 | TW support bracket | 1 | 270040 |
| 21 | 1/2-20 hex flange nut | 1 | S280-8 | -- | Hose ID and length | -- | None |
| 22 | Latch bracket | 1 | 260934 | -- | Working pressure | -- | 500 PSI |
| 23 | 10-32 x 3/8" nyloc nut | 1 | S82-15 | -- | Max. temperature | -- | 210° F |

Series FE9000 Fuel Hose Reels

| Item # | Description | # Req | FE9300 OLPBW | FE9350 OLPBW | FE9400 OLPBW | FE9450 OLPBW |
|--------|---------------------------|-------|--------------|--------------|--------------|--------------|
| 1 | 1/4-20 x 1/2" hex screw | 16 | S2-41 | S2-41 | S2-41 | S2-41 |
| 2 | Side frame | 2 | 270009 | 270009 | 270009 | 270009 |
| 3 | 3/8-16 hex flange nut | 12 | S281-6 | S281-6 | S281-6 | S281-6 |
| 4 | Pillow block | 2 | 600416 | 600416 | 600416 | 600416 |
| 5 | End frame support | 1 | 270012 | 270012 | 270012 | 270012 |
| 6 | 3/8-16 x 5/8" mach. screw | 8 | S44-2 | S44-2 | S44-2 | S44-2 |
| 7 | 3/8-16 x 1 3/4" screw | 4 | S44-8 | S44-8 | S44-8 | S44-8 |
| 8 | Support shaft | 1 | 260899 | 260899 | 260899 | 260899 |
| 9 | Snap ring | 6 | S140-34 | S140-34 | S140-34 | S140-34 |
| 10 | Spring case assembly | 1 | 600413-1 | 600413-2 | 600413-2 | 600413-2 |
| 11 | Spring arbor | 1 | 260888 | 260888 | 260888 | 260888 |
| 12 | Spool assembly | 1 | 600415 | 600415 | 600414 | 600414 |
| 13 | Inlet tube | 1 | 260893 | 260893 | 260893 | 260893 |
| 14 | Hose outlet support | 1 | 270029 | 270029 | 270029 | 270029 |
| 15 | #10 x 3/8" self tap screw | 1 | S32-136 | S32-136 | S32-136 | S32-136 |
| 16 | Reducing bushing | 1 | 270025 | 270025 | None | None |
| 17 | 90° female NPT ell | 1 | 270028 | 270028 | 262451 | 262451 |
| 18 | Latch ratchet | 1 | 260889 | 260889 | 260889 | 260889 |
| 19 | Swivel assembly | 1 | 602026-2 | 602026-2 | 600682-2 | 600682-2 |
| 20 | Reducing coupling | 1 | S289-6 | S289-6 | None | None |
| 21 | 1/2-20 hex flange nut | 1 | S280-8 | S280-8 | S280-8 | S280-8 |
| 22 | Latch bracket | 1 | 260934 | 260934 | 260934 | 260934 |
| 23 | 10-32 x 3/8" nyloc nut | 1 | S82-15 | S82-15 | S82-15 | S82-15 |
| 24 | Latch pawl assembly | 1 | 600454 | 600454 | 600454 | 600454 |
| 25 | Latch spring | 1 | 260067-1 | 260067-1 | 260067-1 | 260067-1 |
| 26 | Latch bushing | 1 | 400012 | 400012 | 400012 | 400012 |
| 27 | 10-32 x 7/8" screw | 1 | S20-110 | S20-110 | S20-110 | S20-110 |
| 28 | Hose assembly | 1 | None | 600160-2 | None | 600451-50 |
| 29 | Hose bumper assembly | 1 | None | A3-HR1005 | None | A4-HR1005 |
| 30 | Guide roller pin - long | 2 | 270016 | 270016 | 270016 | 270016 |
| 31 | Guide roller pin - short | 2 | 270015 | 270015 | 270015 | 270015 |
| 32 | Guide roller | 2 | 262436-5.468 | 262436-5.468 | 262436-5.468 | 262436-5.468 |
| 33 | Guide roller | 2 | 262436-2.968 | 262436-2.968 | 262436-2.968 | 262436-2.968 |
| 34 | Guide roller post | 4 | 270014 | 270014 | 270014 | 270014 |
| 36 | Hose guide roller plate | 1 | 270011 | 270011 | 270011 | 270011 |
| 37 | 5/16-18 x 1/2" hex screw | 4 | S2-51 | S2-51 | S2-51 | S2-51 |
| 38 | 1/4-20 hex nut | 8 | S281-4 | S281-4 | S281-4 | S281-4 |
| 39 | Guide roller plate SW | 1 | 270045 | ----- | 270045 | 270045 |
| 40 | SW support bracket | 1 | 270043 | ----- | 270043 | 270043 |
| 41 | SW support bracket | 1 | 270042 | ----- | 270042 | 270042 |
| 42 | Guide roller plate TW | 1 | 270044 | ----- | 270044 | 270044 |
| 43 | TW support bracket | 1 | 270041 | ----- | 270041 | 270041 |
| 44 | TW support bracket | 1 | 270040 | ----- | 270040 | 270040 |
| -- | Hose ID and length | -- | None | 3/4" x 50' | None | 1" x 50' |
| -- | Working pressure | -- | 500 PSI | *50 PSI | 500 PSI | *50 PSI |
| -- | Max. temperature | -- | 210° F | 150° F | 210° F | 150° F |

*Models equipped with fuel grade hose. UL330 and ULC approved hose. 250 PSI minimum burst.