



COMBINATION NIPPLES

GROOVED - STEEL & SS 316

FEATURES & APPLICATIONS:

• **General Uses:**

Working pressures may vary with type and clamping system used to install couplings.

Combination Nipples are recommended for low pressure discharge and suction service for compatible liquids. NOT for compressible products such as Air, Nitrogen and Steam.

*All blank end & grooved combination nipples are made using Schedule 40 pipe.

Seal Fast Crimp Combination Nipples are to be used with Seal Fast Ferrules and Crimp Sleeves. They are designed with an Interlock System which allows the Ferrule to be permanently attached to the coupling.

WORKING PRESSURE 200 PSI



STEEL - GROOVED



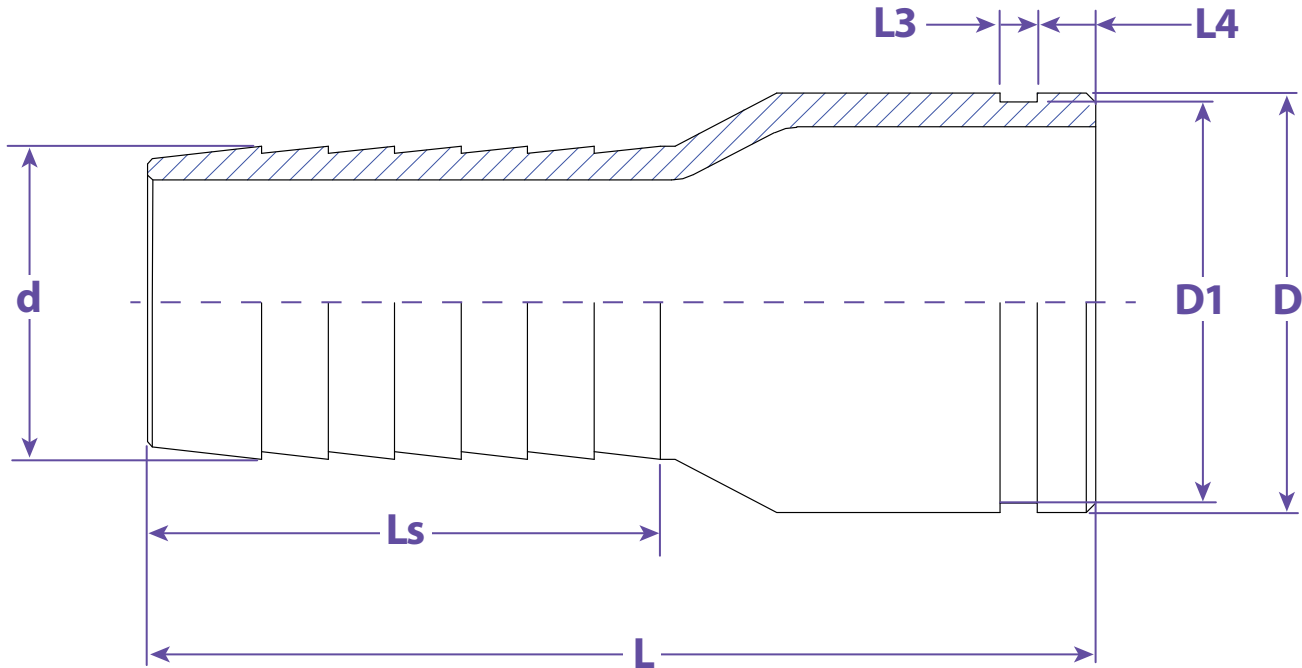
316 SS - GROOVED

STEEL & STAINLESS 316

SIZE	STEEL GROOVED	316SS # GROOVED
1/2"	---	---
3/4"	SF075SG	---
1"	SF100SG	SF100SSG6
1-1/4"	SF125SG	SF125SSG6
1-1/2"	SF150SG	SF150SSG6
2"	SF200SG	SF200SSG6
2-1/2"	SF250SG	SF250SSG6
3"	SF300SG	SF300SSG6
4"	SF400SG	SF400SSG6
5"	SF500SG	---
6"	SF600SG	---
8"	SF800SG	---
10"	SF1000SG	---



Information contained on this page is for general information purposes only. Seal Fast Inc. assumes no responsibility for errors or omissions for this product.



Dimensions

L	Ls	L3	L4	D	D1	d	Part #
3.1024	1.5748	0.3150	0.6299	1.0709	0.9449	0.7795	SF050xxx
3.3071	1.6142	0.3150	0.6299	1.3386	1.2205	1.0354	SF075xxx
3.9291	1.8504	0.3150	0.6299	1.6811	1.5748	1.2992	SF100xxx
4.1063	2.1260	0.3150	0.6299	1.9134	1.7717	1.5354	SF125xxx
4.7165	2.4803	0.3150	0.6299	2.3937	2.2441	2.0315	SF150xxx
5.5236	2.8937	0.3150	0.6299	2.8740	2.7165	2.5315	SF200xxx
6.0866	3.3858	0.3150	0.6299	3.5000	3.3465	3.0315	SF250xxx
7.1850	3.8583	0.3740	0.6299	4.5000	4.3307	4.0315	SF300xxx
8.8504	5.4331	0.3740	0.6299	5.5630	5.3937	5.0315	SF400xxx
10.9134	6.4567	0.3740	0.7480	6.6260	6.4567	6.0472	SF500xxx
12.1260	7.6378	0.4331	0.7480	8.6260	8.4646	8.0472	SF600xxx
13.1102	7.6772	0.4331	0.7480	10.7480	10.5906	10.0787	SF800xxx
14.5276	9.2520	0.4331	0.7480	12.7165	12.5197	12.0866	SF1000xxx

TITLE COMBINATION NIPPLES - GROOVED

DISCLAIMER

All drawings and specifications are subject to change without notice. Drawings represent general dimensions of our products. Seal Fast cannot guarantee the dimensions of the part will exactly match those in the drawing. This drawing is the property of Seal Fast Inc. Copying or reproduction of this drawing is expressly prohibited.

MATERIAL

SFxxxG Carbon Steel Tube
SFxxxSSG6 Stainless Steel Tube 316

DRAWING NOT TO SCALE

PART # SF...G, SSG6

