



COMBINATION NIPPLES

**CRIMPTEK - GROOVED
STEEL & SS 316**

FEATURES & APPLICATIONS:

• **General Uses:**

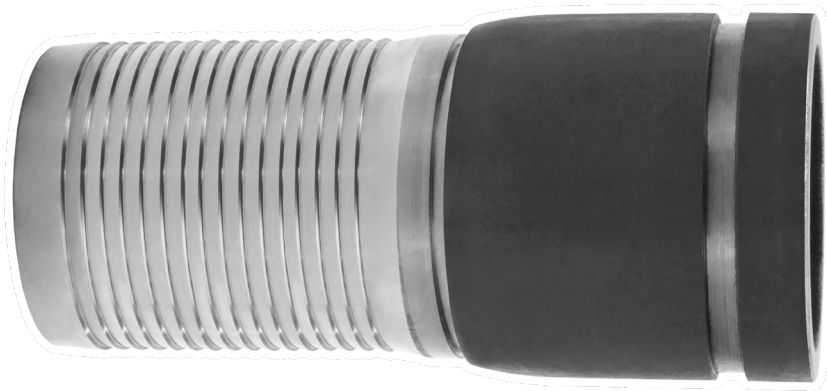
Working pressures may vary with type and clamping system used to install couplings.

Combination Nipples are recommended for low pressure discharge and suction service for compatible liquids. NOT for compressible products such as Air, Nitrogen and Steam.

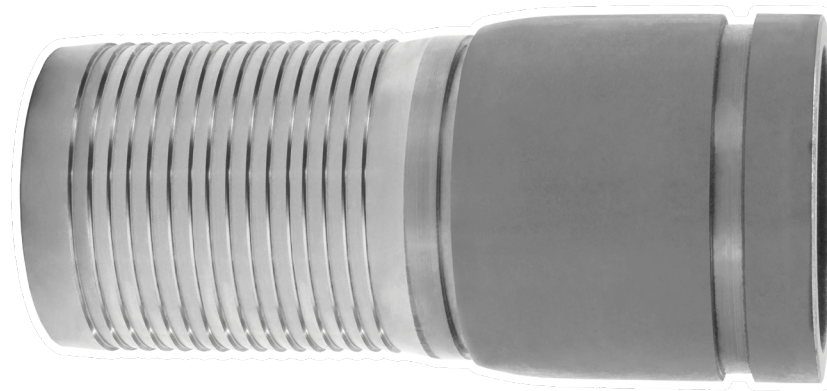
*All blank end & grooved combination nipples are made using Schedule 40 pipe.

Seal Fast Crimp Combination Nipples are to be used with Seal Fast Ferrules and Crimp Sleeves. They are designed with an Interlock System which allows the Ferrule to be permanently attached to the coupling.

WORKING PRESSURE 200 PSI



STEEL - GROOVED

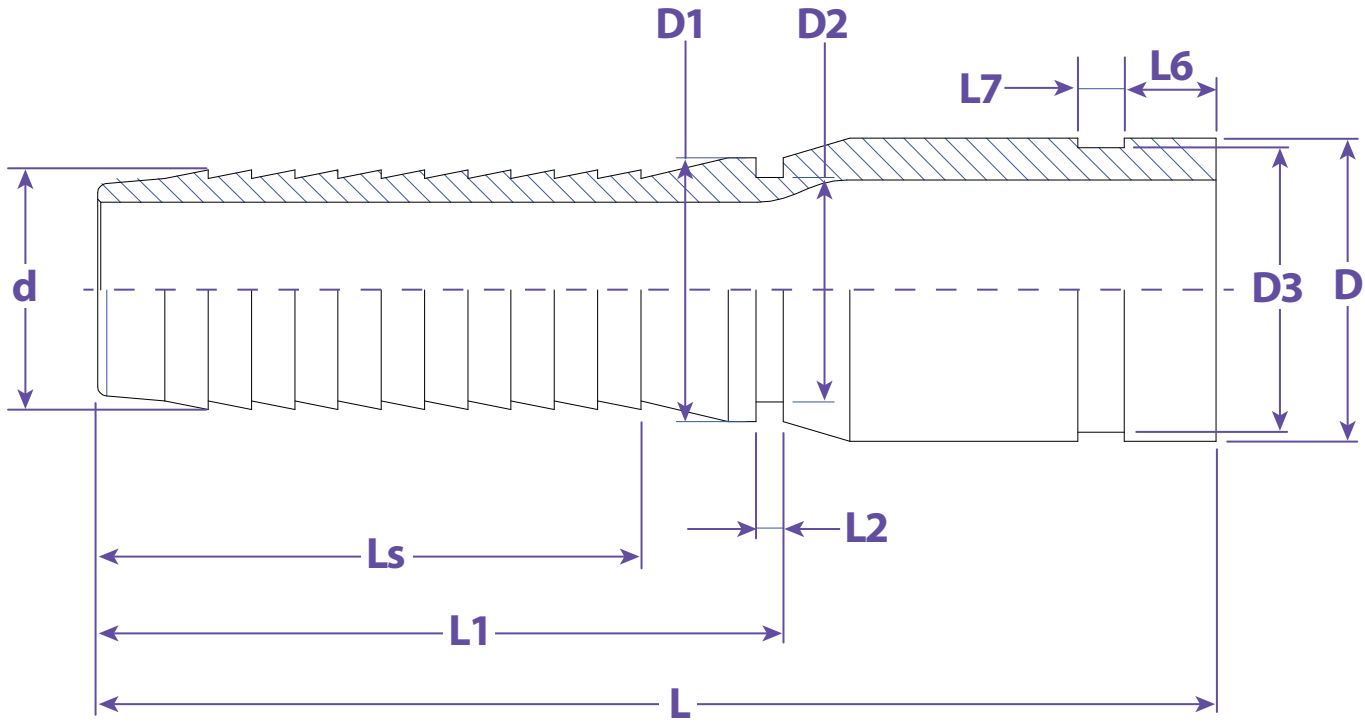


316 SS - GROOVED

SIZE	STEEL GROOVED	316 SS - GROOVED
1"	SF100SGC	SF100SSG6C
1-1/4"	SF125SGC	SF125SSG6C
1-1/2"	SF150SGC	SF150SSG6C
2"	SF200SGC	SF200SSG6C
2-1/2"	SF250SGC	SF250SSG6C
3"	SF300SGC	SF300SSG6C
4"	SF400SGC	SF400SSG6C
6"	SF600SGC	SF600SSG6C



Information contained on this page is for general information purposes only. Seal Fast Inc. assumes no responsibility for errors or omissions for this product.



Dimensions

L	L1	L2	L6	L7	Ls	D	D1	D2	D3	d	Part #
4.528	2.618	0.118	0.630	0.315	2.008	1.339	1.268	1.169	1.220	1.035	SF100...
4.528	2.618	0.118	0.630	0.315	2.028	1.681	1.520	1.413	1.575	1.280	SF125...
4.764	2.756	0.118	0.630	0.315	2.402	1.913	1.677	1.563	1.783	1.535	SF150...
5.236	3.130	0.118	0.630	0.315	2.559	2.394	2.185	2.059	2.264	2.031	SF200...
5.906	3.504	0.126	0.630	0.315	2.756	2.874	2.752	2.610	2.717	2.531	SF250...
7.008	4.370	0.126	0.630	0.315	3.543	3.500	3.315	3.150	3.346	3.031	SF300...
7.598	4.626	0.126	0.630	0.374	3.976	4.500	4.311	4.157	4.331	4.031	SF400...
9.331	6.142	0.157	0.630	0.374	5.335	6.626	6.358	6.181	6.457	6.047	SF600...

TITLE COMBINATION NIPPLES - CRIMP STYLE - GROOVES

DISCLAIMER

All drawings and specifications are subject to change without notice. Drawings represent general dimensions of our products. Seal Fast cannot guarantee the dimensions of the part will exactly match those in the drawing. This drawing is the property of Seal Fast Inc. Copying or reproduction of this drawing is expressly prohibited.

MATERIAL

SFxxxxSGC Steel Tube
SFxxxBSSG6C Stainless Tube 316

DRAWING NOT TO SCALE

PART # SF...SGC, BSSG6C

