

ZINC PLATED STEEL



304 SS



316 SS

COMBINATION NIPPLES

MENDER- ZINC PLATED, SS 304 & SS 316

FEATURES & APPLICATIONS:

• **General Uses:**

Working pressures may vary with type and clamping system used to install couplings.

Combination Nipples are recommended for low pressure discharge and suction service for compatible liquids. NOT for compressible products such as Air, Nitrogen and Steam.

*All blank end & grooved combination nipples are made using Schedule 40 pipe.

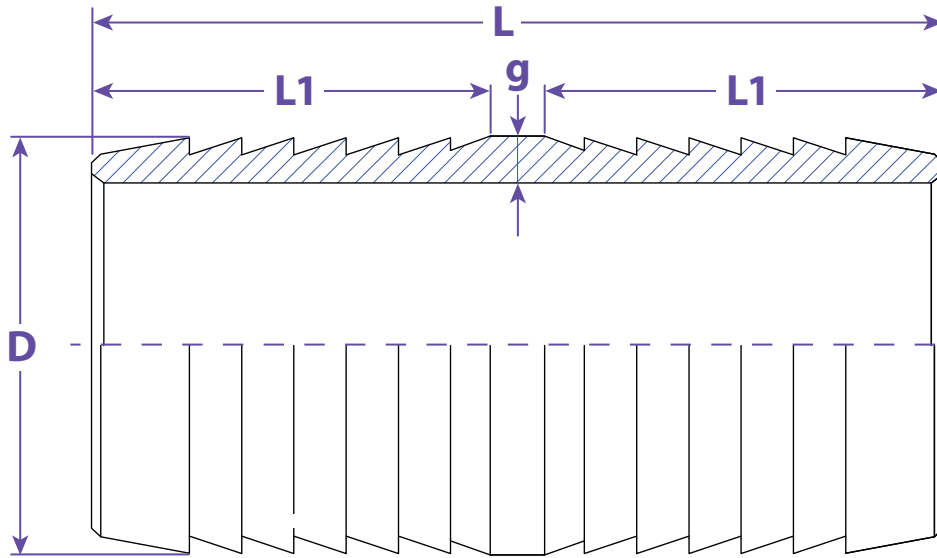
Seal Fast Crimp Combination Nipples are to be used with Seal Fast Ferrules and Crimp Sleeves. They are designed with an Interlock System which allows the Ferrule to be permanently attached to the coupling.

WORKING PRESSURE 200 PSI

MENDER

SIZE	ZINC PLATED STEEL #	304 SS #	316 SS #
1/4"	SF025M	---	---
3/8"	SF038M	---	---
1/2"	SF050M	SF050MSS	SF050MSS6
5/8"	SF058M	---	---
3/4"	SF075M	SF075MSS	SF075MSS6
1"	SF100M	SF100MSS	SF100MSS6
1-1/4"	SF125M	SF125MSS	SF125MSS6
1-1/2"	SF150M	SF150MSS	SF150MSS6
2"	SF200M	SF200MSS	SF200MSS6
2-1/2"	SF250M	SF250MSS	SF250MSS6
3"	SF300M	SF300MSS	SF300MSS6
4"	SF400M	SF400MSS	SF400MSS6
5"	SF500M	---	---
6"	SF600M	SF600MSS	SF600MSS6
8"	SF800M	---	---

Information contained on this page is for general information purposes only. Seal Fast Inc. assumes no responsibility for errors or omissions for this product.



Dimensions				
L	L1	d	g	Part #
2.1260	1.0236	0.2598	0.0709	SF025xxxx
2.5984	1.2598	0.4213	0.0906	SF038xxxx
3.1496	1.5748	0.5354	0.0906	SF050xxxx
3.1496	1.5748	0.6496	0.0906	SF058xxxx
3.9488	1.7717	0.7795	0.0906	SF075xxxx
3.9488	1.7717	1.0354	0.1260	SF100xxxx
3.9488	1.7717	1.2992	0.1260	SF125xxxx
3.9685	1.8504	1.5354	0.1260	SF150xxxx
4.8504	2.2047	2.0315	0.1260	SF200xxxx
5.6929	2.7559	2.5315	0.1575	SF250xxxx
5.9724	2.7559	3.0315	0.1575	SF300xxxx
6.8110	3.4055	4.0315	0.1575	SF400xxxx
8.2126	3.8583	5.0315	0.1969	SF500xxxx
9.4488	4.4094	6.0472	0.2362	SF600xxxx
10.6299	5.0787	8.0472	0.2756	SF800xxxx
11.8110	5.6299	10.0787	0.2756	SF1000xxxx
14.0157	6.6535	12.0866	0.3150	SF1200xxxx

TITLE COMBINATION NIPPLES - MENDERS

DISCLAIMER
All drawings and specifications are subject to change without notice. Drawings represent general dimensions of our products. Seal Fast cannot guarantee the dimensions of the part will exactly match those in the drawing. This drawing is the property of Seal Fast Inc. Copying or reproduction of this drawing is expressly prohibited.

MATERIAL
SFxxxM Zinc Plated Steel
SFxxxSS Stainless Steel Tube 304
SFxxxSS6 Stainless Steel Tube 316

DRAWING NOT TO SCALE

PART # SF...M, MSS, MSS6

