



# Defender Series™ Multiport Manways

The EBW™ brand Defender Series™ Multiport Manways include the Defender Series™ Spill Containers and feature the patented watertight sealing system. Available in both 36" and 42" models with a variety of configurations to meet the needs of any application.

## Highlights

- Provides future access to tank top.
- Fewer forecourt manways improves site appearance and pedestrian safety.
- 18" skirt.
- Cam locks seal manway cover allowing simple removal.
- Optional waterproof sump shield system.
- Cast iron snow plow rings.
- Incorporates 5 gallon Defender Series Spill Containers.
- Cam locks eliminate corroded threads, lost bolts and water entry from not reinstalling bolts after service.

## Specifications

- Exceeds H20 and HS20 load standards (maximum axle load requiring support for the 32,000 or 16,000 pounds for each set of dual tire wheels).

### Approvals

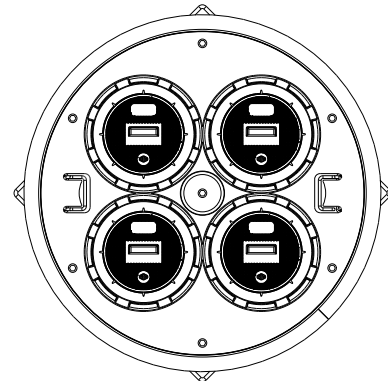
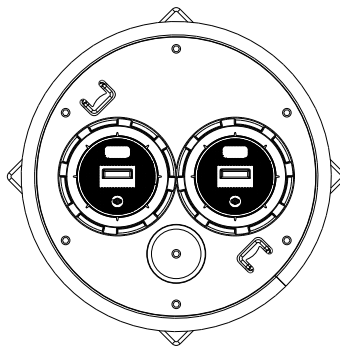
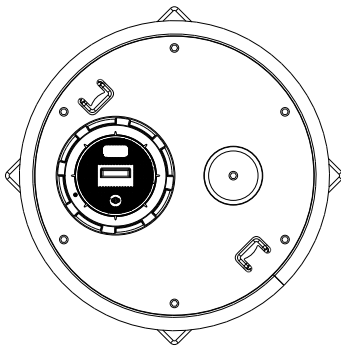
- ULC listed (spill containers).
- CARB approved (spill containers).

One Spill Container  
(36" shown)

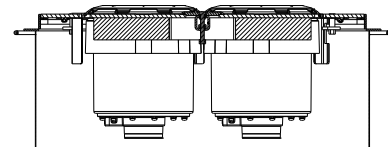
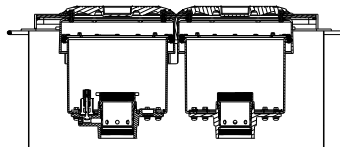
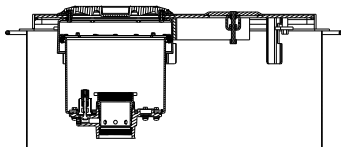
Two Spill Containers  
(36" shown)

Four Spill Containers  
(42" shown)

Multiport  
Top View



Multiport  
Side View



## Ordering Information

Available in 36" and 42" access opening diameters. Spill container access openings are 16" on center to align with standard tank bung openings. Multiport manways include a manway cover with cam locks, 18" aluminum skirt, stainless steel sleeve(s) with cover(s) and fill and/or vapor containers.

### Ordering Guide

#### X - Y - Z - A

#### X = Size and Style

DMP36 = 36" Defender multiport

DMP42 = 42" Defender multiport

#### Y = Number of Spill Containers

1 = One spill container

2 = Two spill containers

4 = Four spill containers

#### Z = Container Configuration

SW = Single Wall

DWI = Double wall w/l2 monitor

DWS = Double wall w/ TSP-ULS sensor

SWT = Single wall NPT

DWIT = Double wall w/l2 monitor NPT

DWST = Double wall w/ TSP-ULS sensor NPT

#### A = Cover Color

YEL = Yellow

RED/ORG = Red and orange

WHT/ORG = White and orange

Example: DMP36-1-SW-YEL = 36" Defender multiport with one spill container, one 13" access port and yellow cast iron lid.

### Defender Series™ Multiport Manways Packages

Model	Description
DMP36-1-SW-YEL	36" Defender multiport, one spill container, one 13" access port, yellow cast iron lid
DMP36-2-SW-RED/ORG	36" Defender multiport, two spill containers, one 8" access port, one red/one orange cast iron lid
DMP36-2-SW-WHT/ORG	36" Defender multiport, two spill containers, one 8" access port, one white/one orange cast iron lid
DMP36R-1-SW-YEL	36" Defender multiport retrofit kit, one spill container, one 13" access port, yellow cast iron lid
DMP36R-2-SW-RED/ORG	36" Defender multiport retrofit kit, two spill containers, one 8" access port, one red/one orange cast iron lid
DMP36R-2-SW-WHT/ORG	36" Defender multiport retrofit kit, two spill containers, one 8" access port, one white/one orange cast iron lid
DMP42-1-SW-YEL	42" Defender multiport, one spill container, one 13" access port, yellow cast iron lid
DMP42-2-SW-RED/ORG	42" Defender multiport, two spill containers, one 8" access port, one red/one orange cast iron lid
DMP42-2-SW-WHT/ORG	42" Defender multiport, two spill containers, one 8" access port, one white/one orange cast iron lid
DMP42-4-SW-WHT/ORG	42" Defender multiport, four spill containers, one 6" access port, two white/two orange cast iron lids
DMP42R-1-SW-YEL	42" Defender multiport retrofit kit, one spill container, one 13" access port, yellow cast iron lid
DMP42R-2-SW-RED/ORG	42" Defender multiport retrofit kit, two spill containers, one 8" access port, one red/one orange cast iron lid
DMP42R-2-SW-WHT/ORG	42" Defender multiport retrofit kit, two spill containers, one 8" access port, one white/one orange cast iron lid
DMP42R-4-SW-WHT/ORG	42" Defender multiport retrofit kit, four spill containers, one 6" access port, two white/two orange cast iron lids



A Franklin Fueling Systems Brand

franklinfueling.com

3760 Marsh Rd. • Madison, WI 53718, USA

Tel: +1 608 838 8786 • Fax: +1 608 838 6433

Tel: USA & Canada +1 800 225 9787 • Tel: UK +44 (0)1473 243300

Tel: Mex 001 800 738 7610 • Tel: FR +33 (0)1 69 21 41 41 • Tel: CH +86 10 8565 4566

