

L-Series

Heavy-duty oil pumps designed for use with
medium to high viscosity fluids



LEGACY OF RETAIL
FUEL TRANSFER SOLUTIONS

L5132

8 | 32 | 30
GPM | QPM | L/min

115/230V AC
Voltage (Power Source)

L5116

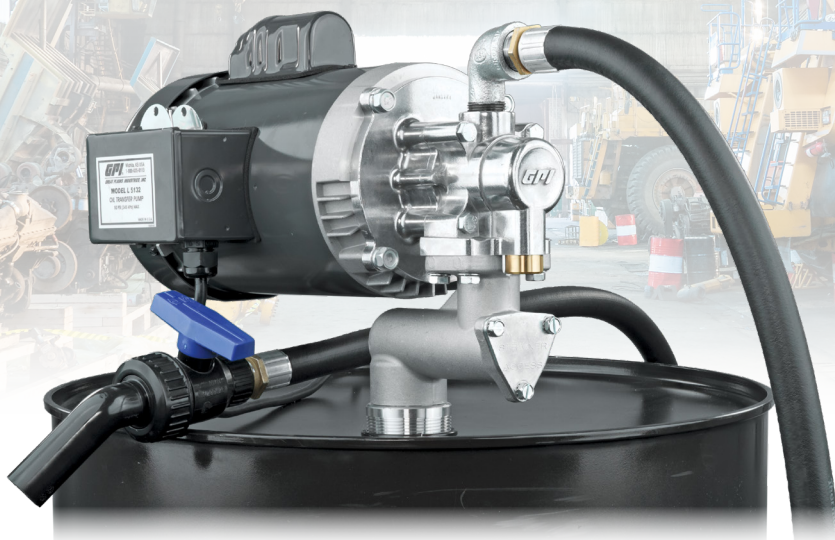
4 | 16 | 15
GPM | QPM | L/min

115/230V AC
Voltage (Power Source)

L5020

5 | 20 | 19
GPM | QPM | L/min

12V DC
Voltage (Power Source)



L5132, Item# 142100-02 shown

HEAVY-DUTY OIL PUMPS

The GPI L-Series oil pump is ideal for use with clean oil, hydraulic fluid, other non-flammable oil-based fluids and antifreeze. Featuring a gerotor gear design and durable cast aluminum housing. It is engineered for long life and limited maintenance. Models are available for stationary or mobile applications and includes a ball valve nozzle, an 8-ft. (2.5 m) dispensing hose, a telescoping suction pipe to fit tank depths between 15 and 40 in., and a factory-installed power cord.

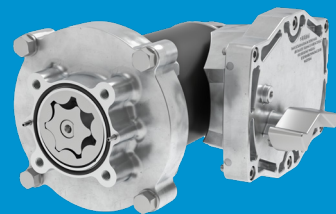
SMART DESIGN

Weight-centering inlet base reduces tank stress and includes an easy-access strainer to protect pump from debris

EASY INSTALLATION

Pre-installed power cord greatly reduces assembly and installation time

GEROTOR PUMP TECHNOLOGY is an efficient and durable solution for pumping medium to high viscosity fluids.



GREAT PLAINS INDUSTRIES



L-Series

Heavy-duty oil pumps designed for use with medium to high viscosity fluids

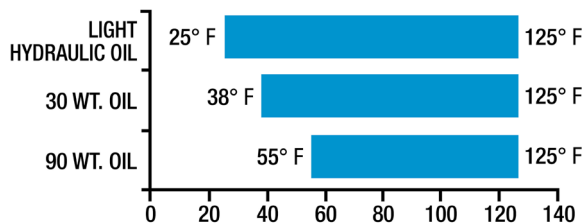


LEGACY OF RETAIL
FUEL TRANSFER SOLUTIONS

L5132

SKU:	142100-02
Voltage, Input:	115/230V (AC) 60 Hz
Amps (Rated):	13(115V)/6.6(230V)
Motor RPMs:	3450
Motor HP:	1
Flow Rate:	32 QPM 8 GPM (30 L/min)
Power Cord:	3 ft. (.91 m)

OPERATING TEMPERATURE RANGE



SPECS (ALL MODELS)

Type:	Gerotor
Duty Cycle:	30 min on/30 min off
Working Pressure:	50 PSI (3.45 bar)
Max Working Temperature:	See Viscosity Chart for Operating Temperature Range
Wetted Materials:	Aluminum Stainless Steel Zinc Plated Steel Brass NBR (Nitrile Butadiene Rubber) Steel
Inlet:	1 in. FNPT
Outlet:	3/4 in. FNPT
Mounting Type:	Center Base, 2 in. MNPT
Suction Pipe:	Polypropylene, Telescoping 15 to 40 in. x 1 in. MNPT
Dispensing Hose:	8 ft. (2.44 m) x 3/4 in.
Nozzle:	Spout, Thermoplastic
Housing:	Corrosion-Resistant Aluminum
Warranty:	1-year

HIGH VISCOSITY UP TO 90W OIL

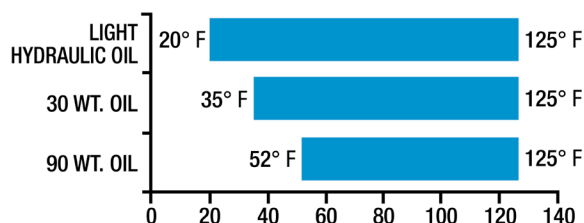
Use in ordinary locations only.
Not for outdoor or hazardous locations.



L5116

SKU:	142100-01
Voltage, Input:	115/230V (AC) 60 Hz
Amps (Rated):	7.5(115V)/3.7(230V)
Motor RPMs:	1725
Motor HP:	0.5
Flow Rate:	16 QPM 4 GPM (15 L/min)
Power Cord:	3 ft. (.91 m)

OPERATING TEMPERATURE RANGE



HIGH VISCOSITY UP TO 90W OIL

Use in ordinary locations only.
Not for outdoor or hazardous locations.

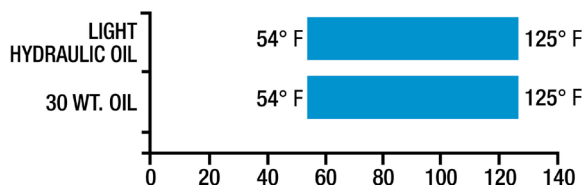


Refer to manual for wiring instructions

L5020

SKU:	142100-04
Voltage, Input:	12V (DC)
Amps (Rated):	40
Motor RPMs:	1800
Motor HP:	0.4
Flow Rate:	20 QPM 5 GPM (19 L/min)
Power Cord:	18 ft. (5.5m), 10/2 AWG, Factory Installed

OPERATING TEMPERATURE RANGE



MEDIUM VISCOSITY UP TO 30W OIL

Suitable for use in outdoor applications.



FLUIDS

Clean Oil | Hydraulic Fluid | Non-Flammable Oil-Based Fluids | Anti-freeze (Do not exceed 50% water) | Not for use with fuels or fluids with flash point of 100°F or less

