



Mirada Medium (MRM)

Outdoor LED Area Light



OVERVIEW

Lumen Package	7,000 - 48,000
Wattage Range	53 - 401
Efficacy Range (LPW)	93 - 148
Weight lbs(kg)	30 (13.6)

QUICK LINKS

[Ordering Guide](#)
[Performance](#)
[Photometrics](#)
[Dimensions](#)

FEATURES & SPECIFICATIONS

Construction

- Rugged die-cast aluminum housing contains factory prewired driver and optical unit. Cast aluminum wiring access door located underneath.
- Designed to mount to square or round poles.
- Fixtures are finished with LSI's DuraGrip® polyester powder coat finishing process. The DuraGrip finish withstands extreme weather changes without cracking or peeling. Other standard LSI finishes available. Consult factory.
- Shipping weight: 30 lbs in carton.

Optical System

- State-of-the-Art one piece silicone optic sheet delivers industry leading optical control with an integrated gasket to provide IP66 rated sealed optical chamber in 1 component.
- Proprietary silicone refractor optics provide exceptional coverage and uniformity in IES Types 2, 3, 5W, FT, FTA and AM.
- Silicone optical material does not yellow or crack with age and provides a typical light transmittance of 93%.
- Zero uplight.
- Available in 5000K, 4000K, and 3000K color temperatures per ANSI C78.377. Also Available in Phosphor Converted Amber with Peak intensity at 610nm.
- Minimum CRI of 70.
- Integral louver (IL) and house-side shield (IH) options available for improved backlight control without sacrificing street side performance. See page 3 for more details.

Electrical

- High-performance programmable driver features over-voltage, under-voltage, short-circuit and over temperature protection. Custom lumen and wattage packages available.
- 0-10V dimming (10% - 100%) standard.
- Standard Universal Voltage (120-277 Vac) Input 50/60 Hz or optional High Voltage (347-480 Vac).
- L80 Calculated Life: >100k Hours (See Lumen Maintenance on Page 5)
- Total harmonic distortion: <20%
- Operating temperature: -40°C to +50°C (-40°F to +122°F). 42L and 48L lumen packages rated to +40°C.
- Power factor: >.90
- Input power stays constant over life.
- Field replaceable 10kV surge protection device meets a minimum Category C Low operation (per ANSI/IEEE C62.41.2).
- High-efficacy LEDs mounted to metal-core circuit board to maximize heat dissipation
- Components are fully encased in potting material for moisture resistance. Driver complies with FCC standards. Driver and key electronic components can easily be accessed.

Controls

- Optional integral passive infrared Bluetooth™ motion and photocell sensor (see page 9 for more details). Fixtures operate independently and can be commissioned via iOS or Android configuration app
- LSI's AirLink™ wireless control system options reduce energy and maintenance

costs while optimizing light quality 24/7. (see page 9 for more details).

Installation

- A single fastener secures the hinged door, underneath the housing and provides quick & easy access to the electrical compartment.
- Included terminal block accepts up to 12 ga. wire.
- Utilizes LSI's traditional 3" drill pattern B3 for easy fastening of LSI products. (See drawing on page 9)

Warranty

- LSI LED Fixtures carry a 5-year warranty.

Listings

- Listed to UL 1598 and UL 8750.
- Meets Buy American Act requirements.
- IDA compliant; with 3000K color temperature selection.
- Title 24 Compliant; see local ordinance for qualification information.
- Suitable for wet Locations.
- IP66 rated Luminaire per IEC 60598.
- 3G rated for ANSI C136.31 high vibration applications are qualified.





Mirada Medium Outdoor LED Area Light

ORDERING GUIDE

[Back to Quick Links](#)TYPICAL ORDER EXAMPLE: **MRM LED 36L SIL FTA UNV DIM 50 70CRI ALSCS04 BRZ IL**

Luminaire Prefix	Light Source	Lumen Package	Light Output	Distribution	Orientation ²	Voltage	Driver
MRM - Mirada	LED	7L - 7,000 lms 9L - 9,000 lms 12L - 12,000 lms 18L - 18,000 lms 24L - 24,000 lms 30L - 30,000 lms 36L - 36,000 lms 42L - 42,000 lms 48L - 48,000 lms Custom Lumen Packages ¹	SIL - Silicone	2 - Type 2 3 - Type 3 5W - Type 5 Wide FT - Forward Throw FTA - Forward Throw Automotive AM - Automotive Merchandise	(blank) - standard L - Optics rotated left 90° R - Optics rotated right 90°	UNV - Universal Voltage (120-277V) HV - High Voltage (347-480V)	DIM - 0-10V Dimming (0-10%)
Color Temp		Color Rendering		Finish		Options	
50 - 5,000 CCT 40 - 4,000 CCT 30 - 3,000 CCT AMB - Phosphor Converted Amber ¹²		70CRI - 70 CRI		BRZ - Bronze BLK - Black GPT - Graphite MSV - Metallic Silver WHT - White PLP - Platinum Plus SVG - Satin Verde Green		(Blank) - None IH - Integral Houseside Shield ² IL - Integral Louver (Sharp Spill Light Cutoff) ²	

Controls (Choose One)

(Blank) - None	Stand-Alone Controls EXT - 0-10v Dimming leads extended to housing exterior CR7P - 7 Pin Control Receptacle ANSI C136.41 ⁶ IMSBT1- Integral Bluetooth™ Motion and Photocell Sensor max 8-24' mounting height ^{4,5} IMSBT2- Integral Bluetooth Motion and Photocell Sensor max 25-40' mounting height ^{4,5}	(Lutron Limelight Controls) LLC - LimeLight Integral Wireless Radio Control by Lutron ⁴ LLCS1 - Limelight Integral Wireless Radio Control and PIR Motion/Daylight Sensor by Lutron 8-15' mt height ⁴ LLCS2 - Limelight Integral Wireless Radio Control and PIR Motion/Daylight Sensor by Lutron 16-30' mt height ⁴ LLCS3 - Limelight Integral Wireless Radio Control and PIR Motion/Daylight Sensor by Lutron 31-40' mt height ⁴
Wireless Controls System ALSC - AirLink Synapse Control System ALSCH - AirLink Synapse Control System Host / Satellite ³ ALSCS02 - AirLink Synapse Control System with 12-20' Motion Sensor ALSCS02 - AirLink Synapse Control System Host / Satellite with 12-20' Motion Sensor ³ ALSCS04 - AirLink Synapse Control System with 20-40' Motion Sensor ALSCS04 - AirLink Synapse Control System Host / Satellite with 20-40' Motion Sensor ³ ALBCS1 - AirLink Blue Wireless Motion & Photo Sensor Controller (8-24' mounting height) ⁴ ALBCS2 - AirLink Blue Wireless Motion & Photo Sensor Controller (25-40' mounting height) ⁴	Button Type Photocells PCI120 - 120V PCI208-277 - 208-277V PCI347 - 347V	

Accessory Ordering Information⁷

Controls Accessories	
Description	Order Number ¹⁰
PC120 Photocell for use with CR7P option (120V) ⁸	122514
PC208-277 Photocell for use with CR7P option (208V, 240V, 277V) ⁸	122515
Twist Lock Photocell (347V) for use with CR7P ⁸	122516
Twist Lock Photocell (480V) for use with CR7P ⁸	1225180
AirLink 5 Pin Twist Lock Controller ⁸	661409
AirLink 7 Pin Twist Lock Controller ⁸	661410
PMOS24-24V Pole-Mounted Occupancy Sensor (24V)	663284CLR
Shorting Cap for use with CR7P	149328

Fusing Accessories ¹¹	
Description	Order Number
Single Fusing (120V)	FK120
Single Fusing (120V)	FK277
Double Fusing (208V, 240V)	DFK240
Double Fusing (480V)	DFK480
Double Fusing (347V)	DFK347

Mounting Accessories ⁹	
Description	Order Number ¹⁰
Universal Mounting Bracket	684616CLR
Adjustable Slip Fitter (2" - 2 3/8" Tenon)	688138CLR
Horizontal Slip Fitter (2" - 2 3/8" Tenon)	652761CLR
Quick Mount Pole Bracket (Square Pole)	687073CLR
Quick Mount Pole Bracket (4-5" Round Pole)	689903CLR
15 Tilt Quick Mount Pole Bracket (Square Pole)	688003CLR
15 Tilt Quick Mount Pole Bracket (4-5" Round Pole)	689905CLR
Wall Mount Bracket	382132CLR
Wood Pole Bracket (6" Minimum Pole Diameter)	751219CLR

Miscellaneous Accessories	
Description	Order Number
IL - Integral Louver/Shield ²	690981
IH - Integral House Side Shield ²	743415
10' Linear Bird Spike Kit (3' Recommended per Luminaire)	736795

FOOTNOTES:

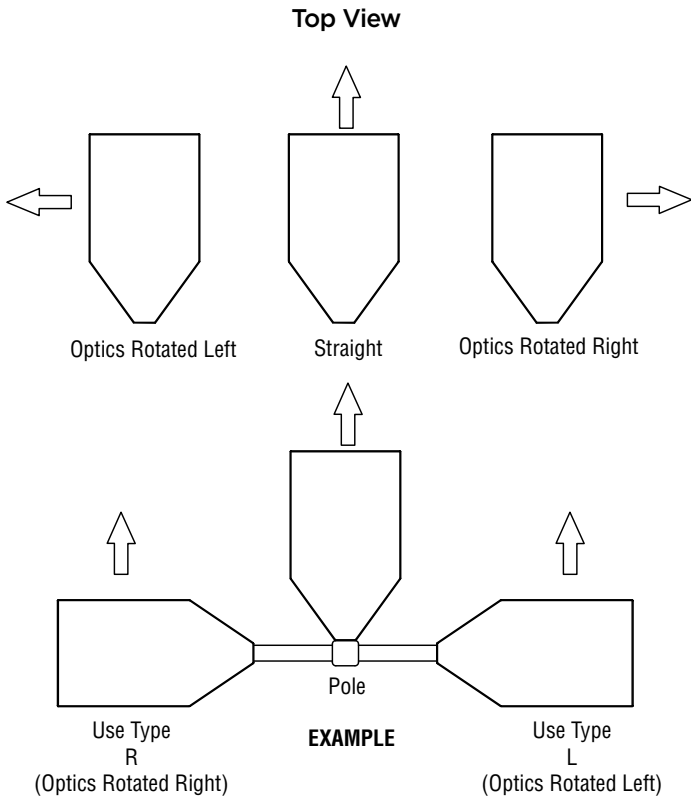
- Custom lumen and wattage packages available, consult factory. Values are within industry standard tolerances but not DLC listed.
- Not available with 5W distribution
- Consult Factory for availability.
- Not available in HV.
- IMSBT is field configurable via the LSI app that can be downloaded from your smartphone's native app store
- Control device or shorting cap must be ordered separately. See Accessory Ordering Information.
- Accessories are shipped separately and field installed.
- Factory installed CR7P option required. See Options.
- "CLR" denotes finish. See Finish options.
- Only available with ALSC/ALSCH control options.
- Fusing must be located in hand hole of pole.
- Only available in 9L and 12L Lumen Packages. Consult factory for lead time and availability.





Mirada Medium Outdoor LED Area Light

OPTICS ROTATION

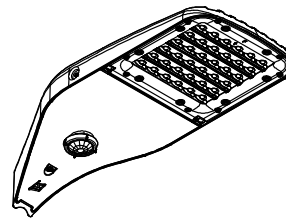


ACCESSORIES/OPTIONS

Integral Louver (IL) and House-Side Shield (IH)

Accessory louver and shield available for improved backlight control without sacrificing street side performance. LSI's Integral Louver (L) and Integral House-Side Shield (IH) options deliver backlight control that significantly reduces spill light behind the poles for applications with pole locations close to adjacent properties. The design maximizes forward reflected light while reducing glare, maintaining the optical distribution selected, and most importantly eliminating light trespass.

Luminaire Shown with Integral Louver (IL)



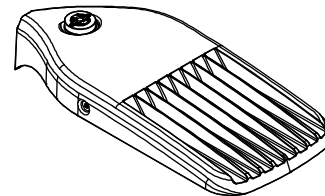
Luminaire Shown with IMSBT Option



7 Pin Photoelectric Control

7-pin ANSI C136.41-2013 control receptacle option available for twist lock photocontrols or wireless control modules. Control accessories sold separately. Dimming leads from the receptacle will be connected to the driver dimming leads (Consult factory for alternate wiring).

Luminaire Shown with PCR 7P





Mirada Medium Outdoor LED Area Light

[Back to Quick Links](#)

PERFORMANCE

Delivered Lumens*												
Lumen Package	Distribution	CRI	3000K CCT			4000K CCT			5000K CCT			Wattage
			Delivered Lumens	Efficacy	BUG Rating	Delivered Lumens	Efficacy	BUG Rating	Delivered Lumens	Efficacy	BUG Rating	
7L	2	70	6711	127	B2-U0-G1	7208	137	B2-U0-G2	7596	144	B2-U0-G2	53
	3		6889	130	B1-U0-G2	7400	140	B1-U0-G2	7798	148	B1-U0-G2	
	5W		6557	124	B3-U0-G1	7043	133	B3-U0-G2	7422	141	B3-U0-G2	
	FT		6701	127	B1-U0-G2	7197	136	B1-U0-G2	7584	144	B2-U0-G2	
	FTA		6799	129	B2-U0-G1	7303	138	B2-U0-G1	7696	146	B2-U0-G1	
	AM		7225	136	B1-U0-G1	7922	149	B2-U0-G1	8239	155	B2-U0-G1	
9L	2	70	8576	125	B2-U0-G2	9396	137	B2-U0-G2	9784	143	B2-U0-G2	68
	3		8804	129	B1-U0-G2	9646	141	B2-U0-G2	10044	147	B2-U0-G2	
	5W		8380	122	B3-U0-G2	9181	134	B3-U0-G2	9560	140	B3-U0-G2	
	FT		8563	125	B2-U0-G2	9382	137	B2-U0-G2	9769	143	B2-U0-G2	
	FTA		8689	127	B2-U0-G2	9520	139	B2-U0-G2	9913	145	B2-U0-G2	
	AM		9432	137	B2-U0-G1	10342	150	B2-U0-G2	10755	156	B2-U0-G2	
12L	2	70	11461	122	B2-U0-G2	12556	134	B3-U0-G2	13075	139	B3-U0-G2	93
	3		11766	125	B2-U0-G2	12890	137	B2-U0-G2	13423	143	B2-U0-G2	
	5W		11199	119	B4-U0-G2	12269	131	B4-U0-G2	12775	136	B4-U0-G2	
	FT		11444	122	B2-U0-G2	12538	133	B2-U0-G3	13055	139	B2-U0-G3	
	FTA		11612	124	B2-U0-G2	12722	135	B2-U0-G2	13247	141	B2-U0-G2	
	AM		12582	134	B2-U0-G2	13796	147	B2-U0-G2	14348	153	B2-U0-G2	
18L	2	70	17168	115	B3-U0-G3	18809	126	B3-U0-G3	19586	131	B3-U0-G3	149
	3		17625	118	B2-U0-G3	19310	129	B3-U0-G3	20107	134	B3-U0-G3	
	5W		16776	112	B4-U0-G2	18379	123	B4-U0-G2	19138	128	B5-U0-G3	
	FT		17143	115	B3-U0-G3	18781	126	B3-U0-G4	19557	131	B3-U0-G4	
	FTA		17395	116	B3-U0-G3	19058	127	B3-U0-G3	19844	133	B3-U0-G3	
	AM		18863	127	B3-U0-G2	20683	149	B3-U0-G2	21511	149	B3-U0-G2	
24L	2	70	22701	121	B4-U0-G3	24276	130	B4-U0-G3	24784	133	B4-U0-G3	189
	3		23636	126	B3-U0-G4	25275	135	B3-U0-G4	25804	138	B3-U0-G4	
	5W		22432	120	B5-U0-G3	23988	128	B5-U0-G3	24490	131	B5-U0-G3	
	FT		23496	126	B3-U0-G4	25126	134	B3-U0-G4	25652	137	B3-U0-G4	
	FTA		23371	125	B3-U0-G3	24992	134	B3-U0-G3	25515	136	B3-U0-G3	
	AM		24522	131	B3-U0-G3	26227	140	B3-U0-G3	26751	143	B3-U0-G3	
30L	2	70	28900	117	B4-U0-G3	30905	125	B4-U0-G3	31551	128	B4-U0-G3	249
	3		30089	122	B3-U0-G4	32176	130	B3-U0-G4	32850	133	B3-U0-G4	
	5W		28557	116	B5-U0-G3	30538	124	B5-U0-G4	3117	126	B5-U0-G4	
	FT		29912	121	B3-U0-G4	31987	130	B3-U0-G4	32656	132	B3-U0-G5	
	FTA		29752	120	B4-U0-G3	31816	129	B4-U0-G3	32482	132	B4-U0-G3	
	AM		31061	126	B3-U0-G3	33221	134	B3-U0-G3	33885	137	B3-U0-G3	
36L	2	70	35025	111	B4-U0-G3	37454	118	B4-U0-G3	38238	121	B4-U0-G4	318
	3		36466	115	B3-U0-G5	38996	123	B3-U0-G5	39812	126	B3-U0-G5	
	5W		34609	109	B5-U0-G4	37010	117	B5-U0-G4	37785	119	B5-U0-G4	
	FT		36251	114	B3-U0-G5	38766	122	B4-U0-G5	39557	125	B4-U0-G5	
	FTA		36058	114	B4-U0-G4	38559	122	B4-U0-G4	39366	124	B4-U0-G3	
	AM		37429	118	B3-U0-G3	40030	126	B3-U0-G3	40831	129	B3-U0-G3	





Mirada Medium Outdoor LED Area Light

PERFORMANCE (CONT.)

Delivered Lumens*												
Lumen Package	Distribution	CRI	3000K CCT			4000K CCT			5000K CCT			Wattage
			Delivered Lumens	Efficacy	BUG Rating	Delivered Lumens	Efficacy	BUG Rating	Delivered Lumens	Efficacy	BUG Rating	
42L	2	70	3994	103	B5-U0-G4	42768	110	B5-U0-G4	43663	112	B5-U0-G4	393
	3		41640	107	B4-U0-G5	44528	114	B4-U0-G5	45460	117	B4-U0-G5	
	5W		39520	101	B5-U0-G4	42261	108	B5-U0-G4	43145	111	B5-U0-G4	
	FT		41395	106	B4-U0-G5	44266	114	B4-U0-G5	45192	116	B4-U0-G5	
	FTA		41174	106	B4-U0-G4	44030	113	B4-U0-G4	44951	115	B4-U0-G4	
	AM		43021	109	B3-U0-G3	46012	117	B4-U0-G3	46932	119	B4-U0-G3	
48L	2	70	48795	122	B5-U0-G4	48795	122	B5-U0-G4	48795	122	B5-U0-G4	401
	3		49156	123	B4-U0-G5	49156	123	B4-U0-G5	49156	123	B4-U0-G5	
	5W		47066	117	B5-U0-G4	47066	117	B5-U0-G4	47066	117	B5-U0-G4	
	FT		48809	122	B4-U0-G5	48809	122	B4-U0-G5	48809	122	B4-U0-G5	
	FTA		49021	122	B5-U0-G4	49021	122	B5-U0-G4	49021	122	B5-U0-G4	
	AM		49615	124	B4-U0-G3	49615	124	B4-U0-G3	49615	124	B4-U0-G3	

ELECTRICAL DATA (AMPS)*							
Lumens	Watts	120V	208V	240V	277V	347V	480V
7L	53	0.4A	0.3A	0.2A	0.2A	0.2A	0.1A
9L	69	0.6A	0.3A	0.3A	0.2A	0.2A	0.1A
12L	94	0.8A	0.5A	0.4A	0.3A	0.3A	0.2A
18L	150	1.2A	0.7A	0.6A	0.5A	0.4A	0.3A
24L	187	1.6A	0.9A	0.8A	0.7A	0.5A	0.4A
30L	247	2.1A	1.2A	1.0A	0.9A	0.7A	0.5A
36L	317	2.6A	1.5A	1.3A	1.1A	0.9A	0.7A
42L	390	3.2A	1.9A	1.6A	1.4A	1.1A	0.8A
48L	401	3.4A	1.9A	1.7A	1.5A	1.2A	0.8A

ELECTRICAL DATA - PHOSPHOR CONVERTED AMBER (AMPS)*							
Lumens	Watts	120V	208V	240V	277V	347V	480V
9L	74.3	0.6A	0.4A	0.3A	0.3A	0.2A	0.2A
12L	102.9	0.9A	0.5A	0.4A	0.4A	0.3A	0.2A

*Electrical data at 25°C (77°F). Actual wattage may differ by +/-10%

RECOMMENDED LUMEN MAINTENANCE ¹ (7-18L)					
Ambient	Initial ²	25h ²	50hr ²	75hr ²	100hr ²
0-50 C	100%	96%	92%	88%	84%

RECOMMENDED LUMEN MAINTENANCE ¹ (24-48L)					
Ambient	Initial ²	25h ²	50hr ²	75hr ²	100hr ²
0-40 C	100%	100%	97%	94%	92%

- Lumen maintenance values at 25C are calculated per TM-21 based on LM-80 data and in-situ testing.
- In accordance with IESNA TM-21-11, Projected Values represent interpolated value based on time durations that are within six times the IESNA LM-80-08 total test duration for the device under testing.
- In accordance with IESNA TM-21-11, Calculated Values represent time durations that exceed six times the IESNA LM-80-08 total test duration for the device under testing.

DELIVERED LUMENS*					
Lumen Package	Distribution	Phosphor Converted Amber (Peak 610nm)			Wattage
		Delivered Lumens	Efficacy	BUG Rating	
9L	2	5848	80	B2-U0-G2	74
	2 - IL	3644	50	B0-U0-G1	
	3	6018	82	B1-U0-G2	
	3 - IL	4468	61	B0-U0-G2	
	5W	5471	74	B3-U0-G1	
	FT	5801	79	B1-U0-G2	
	FT - IL	3649	50	B0-U0-G1	
	FTA	5924	81	B1-U0-G1	
	FTA - IL	4243	58	B1-U0-G1	
12L	2	7530	74	B2-U0-G2	102
	2 - IL	4692	46	B0-U0-G1	
	3	7749	76	B1-U0-G2	
	3 - IL	5753	57	B0-U0-G2	
	5W	7045	69	B3-U0-G2	
	FT	7470	73	B2-U0-G2	
	FT - IL	4699	46	B0-U0-G2	
	FTA	7628	75	B2-U0-G2	
	FTA-IL	5464	54	B1-U0-G1	

*LEDs are frequently updated therefore values are nominal.



Mirada Medium Outdoor LED Area Light

PHOTOMETRICS

[Back to Quick Links](#)

Luminaire photometry has been conducted by a NVLAP accredited testing laboratory in accordance with IESNA LM-79-08. As specified by IESNA LM-79-08 the entire luminaire is tested as the source resulting in a luminaire efficiency of 100%.

See <http://www.lsicorp.com/products/led-lighting-solutions.aspx> for detailed photometric data.

MRM-LED-30L-SIL-2-40-70CRI

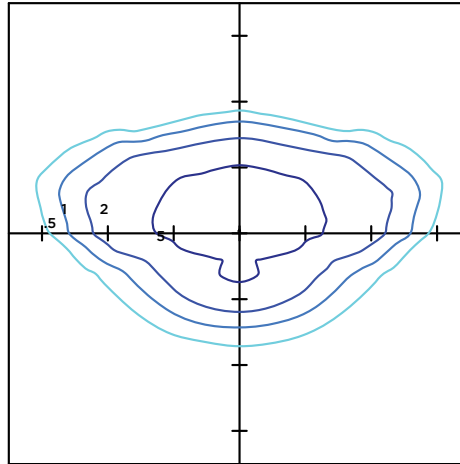
LUMINAIRE DATA

Type 2 Distribution	
Description	4000 Kelvin, 70 CRI
Delivered Lumens	30,905
Watts	247
Efficacy	125
IES Type	Type II - Short
BUG Rating	B4-U0-G3

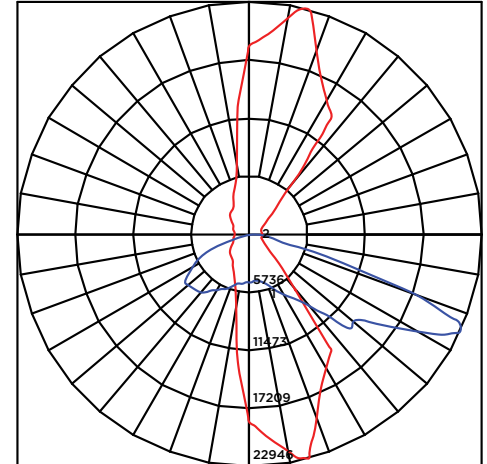
Zonal Lumen Summary

Zone	Lumens	%Luminaire
Low (0-30)°	4392	14%
Medium (30-60)°	18894	61%
High (60-80)°	7359	24%
Very High (80-90)°	260	1%
Uplight (90-180)°	0	0%
Total Flux	30905	100%

ISO FOOTCANDLE



POLAR CURVE



25' Mounting Height/ 25' Grid Spacing

■ 5 FC ■ 2 FC ■ 1 FC ■ 0.5 FC

MRM-LED-30L-SIL-3-40-70CRI

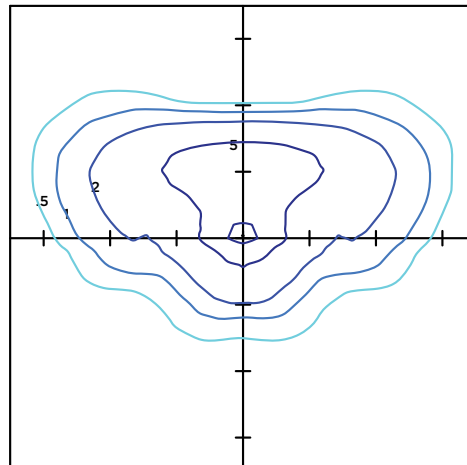
LUMINAIRE DATA

Type 3 Distribution	
Description	4000 Kelvin, 70 CRI
Delivered Lumens	32,176
Watts	247
Efficacy	130
IES Type	Type III - Short
BUG Rating	B3-U0-G4

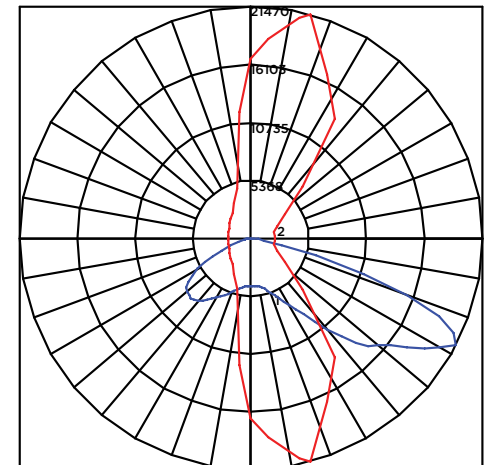
Zonal Lumen Summary

Zone	Lumens	%Luminaire
Low (0-30)°	2970	9%
Medium (30-60)°	16127	50%
High (60-80)°	12779	40%
Very High (80-90)°	301	1%
Uplight (90-180)°	0	0%
Total Flux	32176	100%

ISO FOOTCANDLE



POLAR CURVE



25' Mounting Height/ 25' Grid Spacing

■ 5 FC ■ 2 FC ■ 1 FC ■ 0.5 FC





Mirada Medium Outdoor LED Area Light

PHOTOMETRICS (CONT)

MRM-LED-30L-SIL-FT-40-70CRI

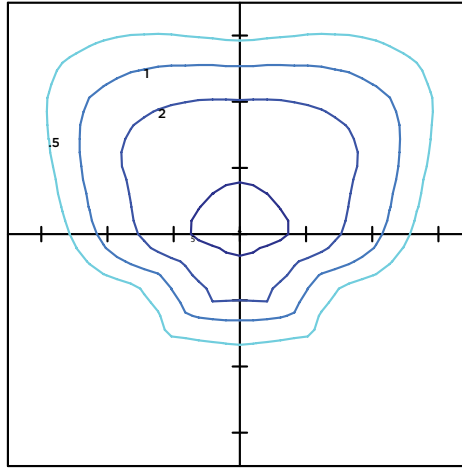
LUMINAIRE DATA

Type FT Distribution	
Description	4000 Kelvin, 70 CRI
Delivered Lumens	31,987
Watts	247
Efficacy	130
IES Type	Type IV - Short
BUG Rating	B3-U0-G4

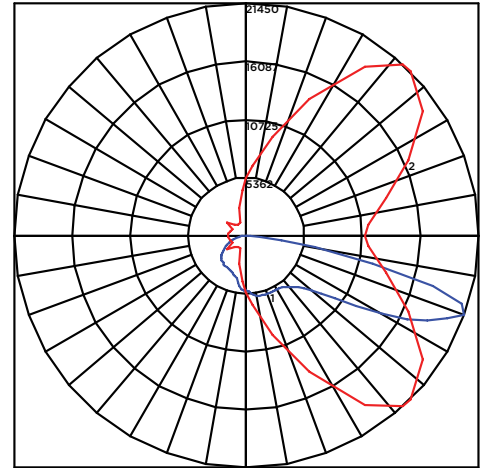
Zonal Lumen Summary

Zone	Lumens	%Luminaire
Low (0-30)°	4126	13%
Medium (30-60)°	13479	42%
High (60-80)°	13768	43%
Very High (80-90)°	614	2%
Uplight (90-180)°	0	0%
Total Flux	31987	100%

ISO FOOTCANDLE



POLAR CURVE



25' Mounting Height/ 25' Grid Spacing

5 FC
 2 FC
 1 FC
 0.5 FC

MRM-LED-30L-SIL-5W-40-70CRI

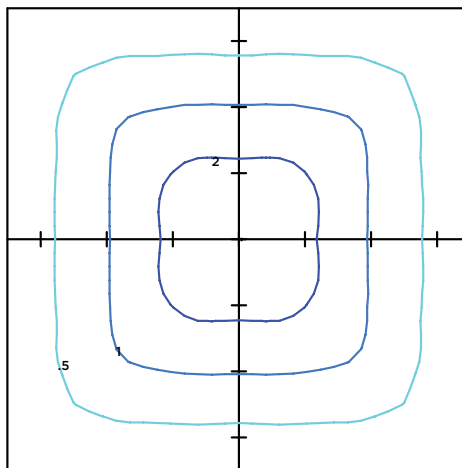
LUMINAIRE DATA

Type 5W Distribution	
Description	4000 Kelvin, 70 CRI
Delivered Lumens	30,538
Watts	247
Efficacy	124
IES Type	Type VS - Short
BUG Rating	B5-U0-G4

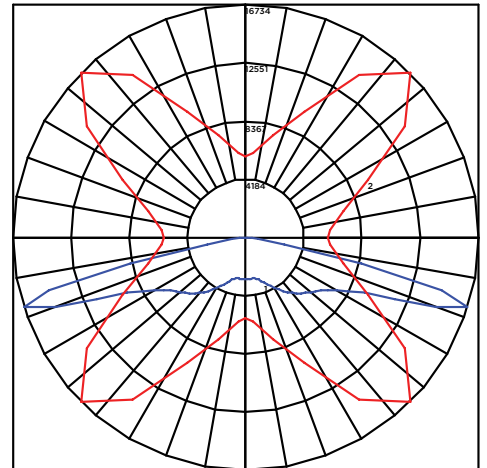
Zonal Lumen Summary

Zone	Lumens	%Luminaire
Low (0-30)°	2862	9%
Medium (30-60)°	12032	39%
High (60-80)°	15328	50%
Very High (80-90)°	315	1%
Uplight (90-180)°	0	0%
Total Flux	30538	100%

ISO FOOTCANDLE



POLAR CURVE



25' Mounting Height/ 25' Grid Spacing

5 FC
 2 FC
 1 FC
 0.5 FC





Mirada Medium Outdoor LED Area Light

PHOTOMETRICS (CONT)

MRM-LED-30L-SIL-FTA-40-70CRI

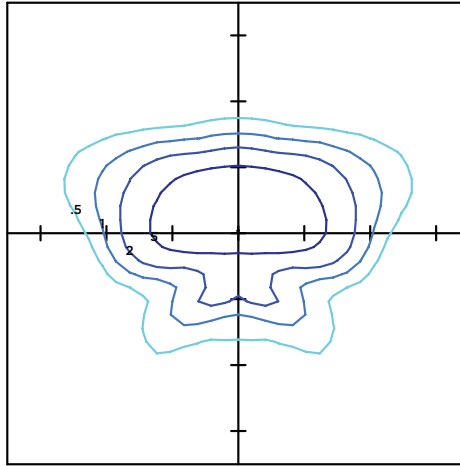
LUMINAIRE DATA

Type FTA Distribution	
Description	4000 Kelvin, 70 CRI
Delivered Lumens	31,816
Watts	247
Efficacy	129
IES Type	Type II - Short
BUG Rating	B4-U0-G3

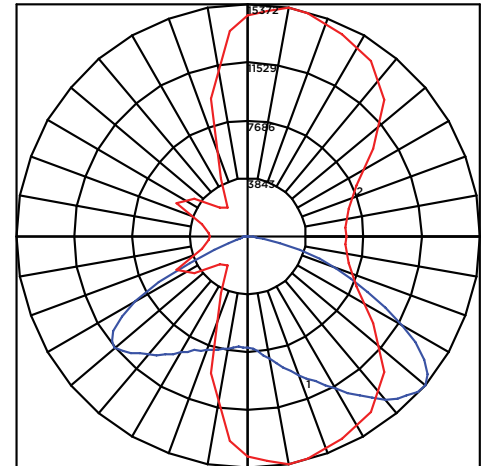
Zonal Lumen Summary

Zone	Lumens	%Luminaire
Low (0-30)°	6758	21%
Medium (30-60)°	18845	59%
High (60-80)°	5872	18%
Very High (80-90)°	341	1%
Uplight (90-180)°	0	0%
Total Flux	31816	100%

ISO FOOTCANDLE



POLAR CURVE



25' Mounting Height/ 25' Grid Spacing

5 FC
 2 FC
 1 FC
 0.5 FC

MRM-LED-30L-SIL-AM-40-70CRI

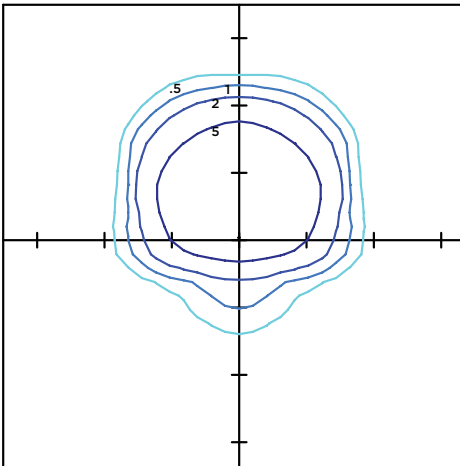
LUMINAIRE DATA

Type AM Distribution	
Description	4000 Kelvin, 70 CRI
Delivered Lumens	33,221
Watts	247
Efficacy	134
IES Type	Type III - Very Short
BUG Rating	B3-U0-G3

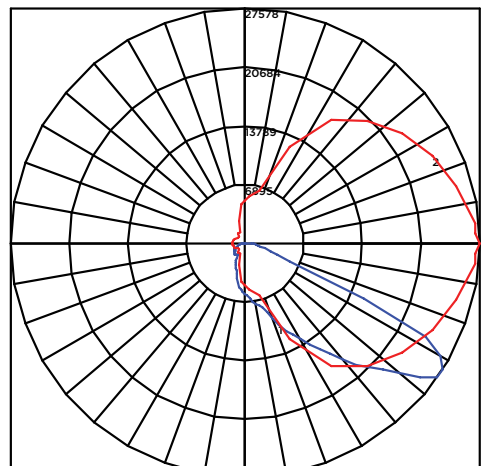
Zonal Lumen Summary

Zone	Lumens	%Luminaire
Low (0-30)°	5550	17%
Medium (30-60)°	21354	64%
High (60-80)°	5881	18%
Very High (80-90)°	435	1%
Uplight (90-180)°	0	0%
Total Flux	33221	100%

ISO FOOTCANDLE



POLAR CURVE



25' Mounting Height/ 25' Grid Spacing

5 FC
 2 FC
 1 FC
 0.5 FC

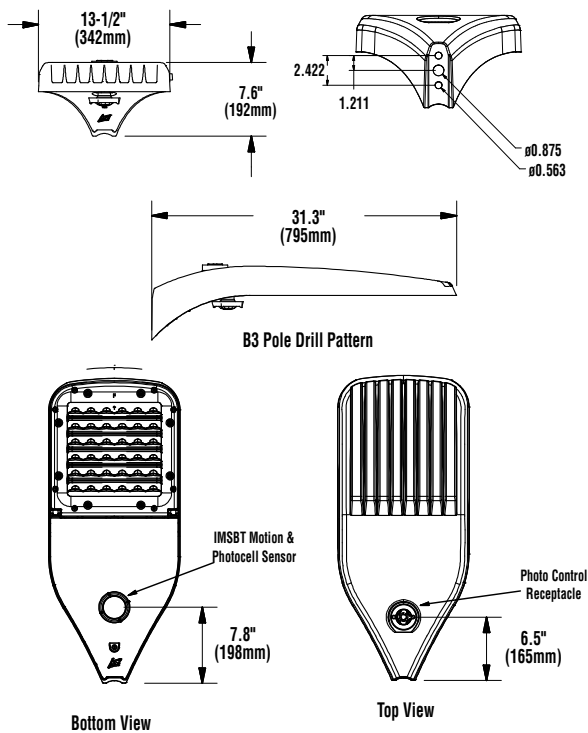




Mirada Medium Outdoor LED Area Light

[Back to Quick Links](#)

PRODUCT DIMENSIONS



LUMINAIRE EPA CHART - MRM								
Tilt Degree		0°	30°	45°	Tilt Degree	0°	30°	45°
Single		0.5	1.5	1.9	T90°	1.0	2.5	2.8
D180°		1.0	1.5	1.9	TN120°	1.0	3.3	3.9
D90°		0.8	1.9	2.3	Q90°	1.0	2.5	2.8

CONTROLS

AirLink Wireless Lighting Controller

The AirLink integrated controller is a California Title 24 compliant lighting controller that provides real-time light monitoring and control with utility-grade power monitoring. It includes a 24V sensor input and power supply to connect a sensor into the outdoor AirLink wireless lighting system. The wireless integrated controller is compatible with this fixture.

Click the link below to learn more details about AirLink.

<https://www.lsicorp.com/wp-content/uploads/documents/products/airlink-outdoor-specsheet.pdf>

Integral Bluetooth™ Motion and Photocell Sensor (IMSBT)

Slim low profile sensor provides multi-level control based on motion and/or daylight. Sensor controls 0-10 VDC LED drivers and is rated for cold and wet locations (-30° C to 70° C). Two unique PIR lenses are available and used based on fixture mounting height. All control parameters are adjustable via an iOS or Android App capable of storing and transmitting sensor profiles.

Click the link below to learn more details about IMSBT.

<https://www.lsicorp.com/wp-content/uploads/documents/products/imsbt-specsheet.pdf>

AirLink Blue

Wireless Bluetooth Mesh Outdoor Lighting Control System that provides energy savings, code compliance and enhanced safety/security for parking lots and parking garages. Three key components; Bluetooth wireless radio/sensor controller, Time Keeper and an iOS App. Capable of grouping multiple fixtures and sensors as well as scheduling time-based events by zone. Radio/Sensor Controller is factory integrated into Area/Site, Wall Mounted, Parking Garage and Canopy luminaires.

Click the link below to learn more details about AirLink Blue.

<https://www.lsicorp.com/product/airlink-blue/>



Mirada Medium Outdoor LED Area Light

POLES & BRACKETS

LSI offers a full line of poles and mounting accessories to complete your lighting assembly. Aluminum and steel in both square and round shafts. In addition, LSI offers round tapered, fluted and hinge based poles. Designed and engineered for durability and protected with our oven baked DuraGrip Protection System. Also available with our DuraGrip+ Protection system for unmatched corrosion resistance and an extended warranty. American made in our Ohio facility with industry leading lead times.

Click the link below to learn more details about poles & brackets.

<https://www.lsicorp.com/products/poles-brackets/>



BKA UMB CLR

The 3G rated UMB allows for seamless integration of LSI luminaires onto existing/ retrofit or new construction poles. The UMB was designed for square or round (tapered or straight) poles with two mounting hole spacings between 3.5" - 5".



BKS PQM15 CLR

The Pole Quick Mount Bracket allows for preset 15° uptilt of LSI luminaires for greater throw of light and increased vertical illumination as well as fast installation onto poles with LSI's 3" or 5" bolt pattern.



BKA ASF CLR

The adjustable Slip Fitter is a 3G rated rugged die cast aluminum adapter to mount LSI luminaires onto a 2" iron pipe, 2 3/8 OD tenon. The Adjustable Slip Fitter can be rotated 180° allowing for tilting LSI luminaires up to 45° and 90° when using a vertical tenon.

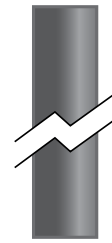


BKS PQMH CLR

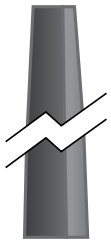
The Pole Quick Mount Bracket allows for lightning fast installation of LSI luminaires onto existing and new construction poles with LSI's B3 or B5 standard pole bolt patterns.



Square Pole
14'-39'



Round Pole
10'-30'



Tapered Pole
20'-39'

