



Catalog # : \_\_\_\_\_ Project : \_\_\_\_\_

Prepared By : \_\_\_\_\_ Date : \_\_\_\_\_

# Slice Medium (SLM)

## Outdoor LED Area Light



### OVERVIEW

Lumen Package	9,000 - 48,000
Wattage Range	69 - 401
Efficacy Range (LPW)	93 - 145
Weight lbs(kg)	30 (13.6)

### QUICK LINKS

[Ordering Guide](#)[Performance](#)[Photometrics](#)[Dimensions](#)

## FEATURES & SPECIFICATIONS

### Construction

- Rugged die-cast aluminum housing contains factory prewired driver and optical unit. Cast aluminum wiring access door located underneath.
- Designed to mount to square poles.
- Fixtures are finished with LSI's DuraGrip® polyester powder coat finishing process. The DuraGrip finish withstands extreme weather changes without cracking or peeling. Other standard LSI finishes available. Consult factory.
- Shipping weight: 30 lbs in carton.

### Optical System

- State-of-the-Art one piece silicone optic sheet delivers industry leading optical control with an integrated gasket to provide IP66 rated sealed optical chamber in 1 component.
- Proprietary silicone refractor optics provide exceptional coverage and uniformity in IES Types 2, 3, 5W, FT, FTA and AM.
- Silicone optical material does not yellow or crack with age and provides a typical light transmittance of 93%.
- Zero uplight.
- Available in 5000K, 4000K, and 3000K color temperatures per ANSI C78.377. Also Available in Phosphor Converted Amber with Peak intensity at 610nm.
- Minimum CRI of 70.
- Integral louver (IL) and house-side shield (IH) options available for improved backlight control without sacrificing street side performance. See page 5 for more details.

### Electrical

- High-performance programmable driver features over-voltage, under-voltage, short-circuit and over temperature protection. Custom lumen and wattage packages available.
- 0-10V dimming (10% - 100%) standard.
- Standard Universal Voltage (120-277 Vac) Input 50/60 Hz or optional High Voltage (347-480 Vac).
- L80 Calculated Life: >100k Hours (See Lumen Maintenance on Page 3)
- Total harmonic distortion: <20%
- Operating temperature: -40°C to +50°C (-40°F to +122°F). 42L and 48L lumen packages rated to +40°C.
- Power factor: >.90
- Input power stays constant over life.
- Field replaceable 10kV surge protection device meets a minimum Category C Low operation (per ANSI/IEEE C62.41.2).
- High-efficacy LEDs mounted to metal-core circuit board to maximize heat dissipation
- Components are fully encased in potting material for moisture resistance. Driver complies with FCC standards. Driver and key electronic components can easily be accessed.

### Controls

- Optional integral passive infrared Bluetooth™ motion and photocell sensor (see page 5 for more details). Fixtures operate independently and can be commissioned via iOS or Android configuration app.

- LSI's AirLink™ wireless control system options reduce energy and maintenance costs while optimizing light quality 24/7. (see page 5 for more details).

### Installation

- A single fastener secures the hinged door, underneath the housing and provides quick & easy access to the electrical compartment.
- Included terminal block accepts up to 12 ga. wire.
- Utilizes LSI's traditional 3" drill pattern B3 for easy fastening of LSI products.

### Warranty

- LSI LED Fixtures carry a 5-year warranty.

### Listings

- Listed to UL 1598 and UL 8750.
- Meets Buy American Act requirements.
- IDA compliant; with 3000K color temperature selection.
- Title 24 Compliant; see local ordinance for qualification information.
- Suitable for wet Locations.
- IP66 rated Luminaire per IEC 60598.
- 3G rated for ANSI C136.31 high vibration applications
- IP66 rated Luminaire per IEC 60598.
- 3G rated for ANSI C136.31 high vibration applications are qualified.





# Slice Medium Outdoor LED Area Light

## ORDERING GUIDE

[Back to Quick Links](#)

TYPICAL ORDER EXAMPLE: **SLM LED 36L SIL FTA UNV DIM 50 70CRI ALSCS04 BRZ IL**

Luminaire Prefix	Light Source	Lumen Package	Light Output	Distribution	Orientation <sup>2</sup>	Voltage	Driver
<b>SLM</b> - Slice Medium	<b>LED</b>	<b>9L</b> - 9,000 lms <b>12L</b> - 12,000 lms <b>18L</b> - 18,000 lms <b>24L</b> - 24,000 lms <b>30L</b> - 30,000 lms <b>36L</b> - 36,000 lms <b>42L</b> - 42,000 lms <b>48L</b> - 48,000 lms Custom Lumen Packages <sup>1</sup>	<b>SIL</b> - Silicone	<b>2</b> - Type 2 <b>3</b> - Type 3 <b>5W</b> - Type 5 Wide <b>FT</b> - Forward Throw <b>FTA</b> - Forward Throw Automotive <b>AM</b> - Automotive Merchandise	<b>(blank)</b> - standard <b>L</b> - Optics rotated left 90° <b>R</b> - Optics rotated right 90°	<b>UNV</b> - Universal Voltage (120-277V) <b>HV</b> - High Voltage (347-480V)	<b>DIM</b> - 0-10V Dimming (0-10%)

Color Temp	Color Rendering	Controls (Choose One)	Finish	Options
<b>50</b> - 5,000 CCT <b>40</b> - 4,000 CCT <b>30</b> - 3,000 CCT <b>AMB</b> - Phosphor Converted Amber <sup>12</sup>	<b>70CRI</b> - 70 CRI	<b>(Blank)</b> - None  <b>Wireless Controls System</b> <b>ALSC</b> - AirLink Synapse Control System <b>ALSCH</b> - AirLink Synapse Control System Host / Satellite <sup>3</sup> <b>ALSCS02</b> - AirLink Synapse Control System with 12-20' Motion Sensor <b>ALSCS02</b> - AirLink Synapse Control System Host / Satellite with 12-20' Motion Sensor <sup>3</sup> <b>ALSCS04</b> - AirLink Synapse Control System with 20-40' Motion Sensor <b>ALSCS04</b> - AirLink Synapse Control System Host / Satellite with 20-40' Motion Sensor <sup>3</sup> <b>ALBCS1</b> - AirLink Blue Wireless Motion & Photo Sensor Controller (8-24' mounting height) <sup>4</sup> <b>ALBCS2</b> - AirLink Blue Wireless Motion & Photo Sensor Controller (25-40' mounting height) <sup>4</sup> <b>Stand-Alone Controls</b> <b>EXT</b> - 0-10V Dimming leads extended to housing exterior <b>CR7P</b> - 7 Pin Control Receptacle ANSI C136.41 <sup>6</sup> <b>IMSBT1</b> - Integral Bluetooth™ Motion and Photocell Sensor max 8-24' mounting height <sup>4,5</sup> <b>IMSBT2</b> - Integral Bluetooth Motion and Photocell Sensor max 25-40' mounting height <sup>4,5</sup> <b>Button Type Photocells</b> <b>PCI120</b> - 120V <b>PCI208-277</b> - 208 -277V <b>PCI347</b> - 347V	<b>BRZ</b> - Bronze <b>BLK</b> - Black <b>GPT</b> - Graphite <b>MSV</b> - Metallic Silver <b>WHT</b> - White <b>PLP</b> - Platinum Plus <b>SVG</b> - Satin Verde Green	<b>(Blank)</b> - None <b>IH</b> - Integral Houseside Shield <sup>2</sup> <b>IL</b> - Integral Louver (Sharp Spill Light Cutoff) <sup>2</sup>

### Accessories Ordering Information<sup>7</sup>

Controls Accessories	
Description	Order Number
PC120 Photocell for use with CR7P option (120V) <sup>8</sup>	122514
PC208-277 Photocell for use with CR7P option (208V, 240V, 277V) <sup>8</sup>	122515
Twist Lock Photocell (347V) for use with CR7P <sup>8</sup>	122516
Twist Lock Photocell (480V) for use with CR7P <sup>8</sup>	1225180
AirLink 5 Pin Twist Lock Controller <sup>8</sup>	661409
AirLink 7 Pin Twist Lock Controller <sup>8</sup>	661410
PMOS24-24V Pole-Mounted Occupancy Sensor (24V) <sup>9,10</sup>	663284CLR
Shorting Cap for use with CR7P <sup>8</sup>	149328

Fusing Accessories <sup>11</sup>	
Description	Order Number
Single Fusing (120V)	FK120
Single Fusing (120V)	FK277
Double Fusing (208V, 240V)	DFK240
Double Fusing (480V)	DFK480
Double Fusing (347V)	DFK347

### FOOTNOTES:

1. Custom lumen and wattage packages available, consult factory. Values are within industry standard tolerances but not DLC listed.
2. Not available on "Type 5W" distribution.
3. Consult Factory for Site Layout
4. Not available in HV.
5. IMSBT is field configurable via the LSI app that can be downloaded from your smartphone's native app store

Mounting Accessories <sup>9</sup>	
Description	Order Number
Round Pole Adapter (3" Round/Tapered Poles)	408273CLR
Round Pole Adapter (4" Round Poles)	379967CLR
Round Pole Adapter (5" Round Poles)	379968CLR
Universal Mounting Bracket	684616CLR
Adjustable Slip Fitter (2" - 2 3/8" Tenon)	688138CLR
Quick Mount Pole Bracket (Square Pole)	687073CLR
Quick Mount Pole Bracket (4-5" Round Pole)	689903CLR
15 Tilt Quick Mount Pole Bracket (Square Pole)	688003CLR
15 Tilt Quick Mount Pole Bracket (4-5" Round Pole)	689905CLR
Wall Mount Bracket	382132CLR
Wood Pole Bracket (6" Minimum Pole Diameter)	751219CLR

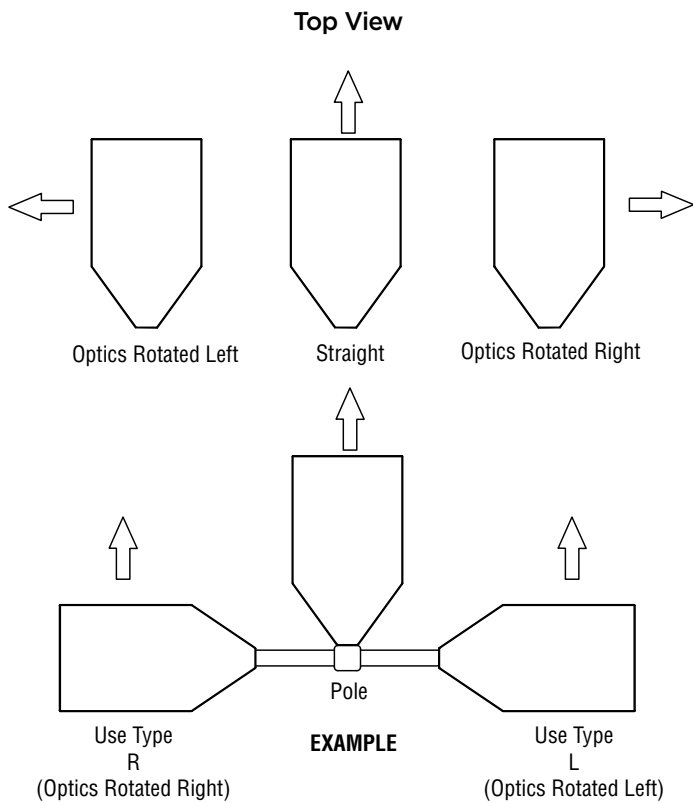
Shielding & Miscellaneous Accessories	
Description	Order Number
IH - Integral Louver/Shield <sup>2</sup>	743414
IL - Integral Houseside Shield <sup>2</sup>	684812
10' Linear Bird Spike Kit (6' Recommended per Luminaire)	736795

6. Control device or shorting cap must be ordered separately. See Accessory Ordering Information.
7. Accessories are shipped separately and field installed.
8. Factory installed CR7P option required. See Options.
9. "CLR" denotes finish. See Finish options.
10. Only available with ALSC/ALSCH control options.
11. Fusing must be located in hand hole of pole.
12. Only available in 9L and 12L Lumen Packages. Consult factory for lead time and availability.





## OPTICS ROTATION



## ACCESSORIES/OPTIONS

### Integral Louver (IL) and House-Side Shield (IH)

Accessory louver and shield available for improved backlight control without sacrificing street side performance. LSI's Integral Louver (L) and Integral House-Side Shield (IH) options deliver backlight control that significantly reduces spill light behind the poles for applications with pole locations close to adjacent properties. The design maximizes forward reflected light while reducing glare, maintaining the optical distribution selected, and most importantly eliminating light trespass. Both options rotate with the optical distribution.

Luminaire Shown with Integral Louver (IL)



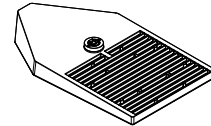
Luminaire Shown with IMSBT Option



### 7 Pin Photoelectric Control

7-pin ANSI C136.41-2013 control receptacle option available for twist lock photocontrols or wireless control modules. Control accessories sold separately. Dimming leads from the receptacle will be connected to the driver dimming leads (Consult factory for alternate wiring).

Fixture Shown with CR7P





# Slice Medium Outdoor LED Area Light

## PERFORMANCE

[Back to Quick Links](#)

Delivered Lumens*												
Lumen Package	Distribution	CRI	3000K CCT			4000K CCT			5000K CCT			Wattage
			Delivered Lumens	Efficacy	BUG Rating	Delivered Lumens	Efficacy	BUG Rating	Delivered Lumens	Efficacy	BUG Rating	
9L	2	70	8956	131	B2-U0-G2	9427	138	B2-U0-G2	9838	144	B2-U0-G2	68
	3		9088	133	B2-U0-G2	9566	140	B2-U0-G2	9983	146	B2-U0-G2	
	5W		8431	123	B3-U0-G2	8875	130	B3-U0-G2	8262	135	B3-U0-G2	
	FT		9046	133	B2-U0-G2	9522	140	B2-U0-G2	9937	146	B2-U0-G2	
	FTA		8993	131	B2-U0-G2	9466	138	B2-U0-G2	9879	144	B2-U0-G2	
	AM		8953	132	B2-U0-G1	9817	144	B2-U0-G2	10210	150	B2-U0-G2	
12L	2	70	11842	127	B3-U0-G2	12465	134	B3-U0-G2	13009	140	B3-U0-G2	93
	3		12017	129	B2-U0-G2	12649	136	B2-U0-G2	13200	142	B2-U0-G2	
	5W		11149	120	B4-U0-G2	11735	126	B4-U0-G2	12247	132	B4-U0-G2	
	FT		11962	128	B2-U0-G2	12591	135	B2-U0-G2	13140	141	B2-U0-G3	
	FTA		11891	128	B3-U0-G3	12517	134	B3-U0-G3	13062	140	B3-U0-G3	
	AM		11997	129	B2-U0-G2	13155	141	B3-U0-G2	13681	147	B3-U0-G2	
18L	2	70	17722	119	B3-U0-G3	18655	126	B3-U0-G3	19468	131	B3-U0-G3	149
	3		17984	121	B2-U0-G3	18930	127	B3-U0-G3	19755	133	B3-U0-G3	
	5W		16685	112	B4-U0-G2	17563	118	B4-U0-G2	18328	123	B4-U0-G2	
	FT		17901	121	B3-U0-G3	18843	127	B3-U0-G3	19664	132	B3-U0-G4	
	FTA		17796	120	B3-U0-G3	18732	126	B3-U0-G3	19549	132	B3-U0-G3	
	AM		17906	121	B3-U0-G2	19634	133	B3-U0-G2	20419	148	B3-U0-G2	
24L	2	70	24122	128	B4-U0-G3	24851	132	B4-U0-G3	25119	133	B4-U0-G3	189
	3		24945	132	B3-U0-G3	25699	136	B3-U0-G4	25976	138	B3-U0-G4	
	5W		22673	122	B5-U0-G3	23667	125	B5-U0-G3	23823	127	B5-U0-G3	
	FT		24276	129	B3-U0-G4	25010	132	B3-U0-G4	25280	134	B3-U0-G4	
	FTA		24715	131	B3-U0-G3	25462	135	B3-U0-G3	25737	136	B3-U0-G3	
	AM		24056	127	B3-U0-G2	25729	136	B3-U0-G3	26243	139	B3-U0-G3	
30L	2	70	30286	122	B4-U0-G3	31201	126	B4-U0-G3	31538	127	B4-U0-G3	249
	3		31319	126	B3-U0-G4	32266	130	B3-U0-G4	32614	131	B3-U0-G4	
	5W		28843	116	B5-U0-G3	29715	120	B5-U0-G3	30036	121	B5-U0-G4	
	FT		30479	123	B3-U0-G4	31401	126	B3-U0-G4	31740	128	B3-U0-G5	
	FTA		31030	125	B3-U0-G3	31969	129	B4-U0-G3	32314	130	B4-U0-G3	
	AM		30471	122	B3-U0-G3	32590	131	B3-U0-G3	33242	134	B3-U0-G3	
36L	2	70	36082	114	B4-U0-G4	37173	117	B4-U0-G4	37574	118	B4-U0-G4	318
	3		37313	117	B3-U0-G4	38442	121	B3-U0-G4	38857	122	B4-U0-G4	
	5W		34363	108	B5-U0-G4	35402	111	B5-U0-G4	35784	113	B5-U0-G4	
	FT		36313	114	B3-U0-G5	37411	118	B4-U0-G5	37815	119	B4-U0-G5	
	FTA		36969	116	B4-U0-G4	38087	120	B4-U0-G4	38498	121	B4-U0-G4	
	AM		36718	115	B3-U0-G3	39270	123	B4-U0-G3	40056	126	B4-U0-G3	
42L	2	70	41060	104	B5-U0-G4	42301	108	B5-U0-G4	42758	109	B5-U0-G4	393
	3		42461	108	B4-U0-G5	43745	111	B4-U0-G5	44217	112	B4-U0-G5	
	5W		39104	99	B5-U0-G4	40286	102	B5-U0-G4	40721	104	B5-U0-G4	
	FT		41323	105	B4-U0-G5	42572	108	B4-U0-G5	43032	109	B4-U0-G5	
	FTA		42069	107	B4-U0-G4	43341	110	B4-U0-G4	43809	111	B4-U0-G4	
	AM		42205	107	B4-U0-G3	45138	114	B4-U0-G3	46041	116	B4-U0-G3	
48L	2	70	45975	114	B5-U0-G4	46914	116	B5-U0-G4	46914	116	B5-U0-G4	401
	3		46646	115	B4-U0-G5	47598	118	B4-U0-G5	47598	118	B4-U0-G5	
	5W		45243	112	B5-U0-G4	46166	114	B5-U0-G4	46166	114	B5-U0-G4	
	FT		46235	114	B4-U0-G5	47178	116	B4-U0-G5	47178	116	B4-U0-G5	
	FTA		46559	115	B5-U0-G4	47509	117	B5-U0-G4	47509	117	B5-U0-G4	
	AM		47134	116	B4-U0-G3	48096	119	B4-U0-G3	48096	119	B4-U0-G3	





# Slice Medium Outdoor LED Area Light

## PERFORMANCE (CONT.)

ELECTRICAL DATA (AMPS)*							
Lumens	Watts	120V	208V	240V	277V	347V	480V
9L	68.2	0.6	0.3	0.3	0.2	0.2	0.1
12L	93.1	0.8	0.4	0.4	0.3	0.3	0.2
18L	148.5	1.2	0.7	0.6	0.5	0.4	0.3
24L	188.8	1.6	0.9	0.8	0.7	0.5	0.4
30L	248.6	2.1	1.2	1.0	0.9	0.7	0.5
36L	317.8	2.6	1.5	1.3	1.1	0.9	0.7
42L	393.4	3.3	1.9	1.6	1.4	1.1	0.8
48L	401.4	3.4	1.9	1.7	1.5	1.2	.8

\*Electrical data at 25°C (77°F). Actual wattage may differ by +/-10%

### FOOTNOTES:

- Lumen maintenance values at 25C are calculated per TM-21 based on LM-80 data and in-situ testing.
- In accordance with IESNA TM-21-11, Projected Values represent interpolated value based on time durations that are within six times the IESNA LM-80-08 total test duration for the device under testing.
- In accordance with IESNA TM-21-11, Calculated Values represent time durations that exceed six times the IESNA LM-80-08 total test duration for the device under testing.

RECOMMENDED LUMEN MAINTENANCE <sup>1</sup> (9-18L)					
Ambient	Initial <sup>2</sup>	25h <sup>2</sup>	50h <sup>2</sup>	75h <sup>2</sup>	100h <sup>2</sup>
0 C	100%	97%	94%	90%	87%
10 C	100%	97%	94%	90%	87%
20 C	100%	97%	94%	90%	87%
25 C	100%	97%	93%	90%	86%
30 C	100%	97%	93%	89%	86%
40 C	100%	97%	92%	88%	84%
50 C	100%	96%	91%	87%	83%

RECOMMENDED LUMEN MAINTENANCE <sup>1</sup> (24-48L)					
Ambient	Initial <sup>2</sup>	25h <sup>2</sup>	50h <sup>2</sup>	75h <sup>2</sup>	100h <sup>2</sup>
0 C - 40C	100%	100%	97%	94%	92%

## PHOTOMETRICS

[Back to Quick Links](#)

Luminaire photometry has been conducted by a NVLAP accredited testing laboratory in accordance with IESNA LM-79-08. As specified by IESNA LM-79-08 the entire luminaire is tested as the source resulting in a luminaire efficiency of 100%.

See <http://www.lsicorp.com/products/led-lighting-solutions.aspx> for detailed photometric data.

## SLM-LED-30L-SIL-2-40-70CRI

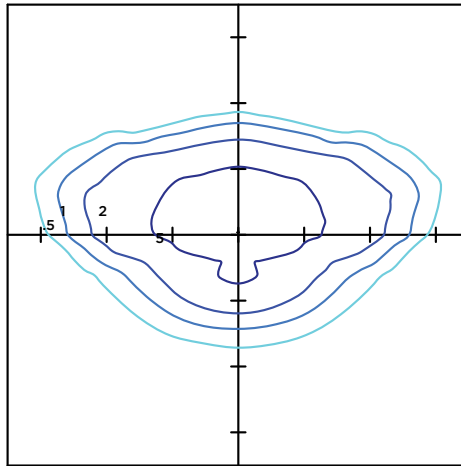
### LUMINAIRE DATA

Type 2 Distribution	
Description	4000 Kelvin, 70 CRI
Delivered Lumens	31,201
Watts	248.6
Efficacy	126
IES Type	Type II - Short
BUG Rating	B4-U0-G3

### Zonal Lumen Summary

Zone	Lumens	%Luminaire
Low (0-30)°	4375	14%
Medium (30-60)°	18726	60%
High (60-80)°	7949	25%
Very High (80-90)°	152	0%
Uplight (90-180)°	0	0%
Total Flux	31201	100%

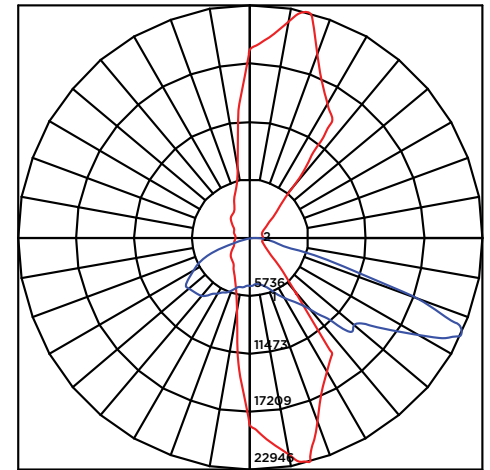
### ISO FOOTCANDLE



### 25' Mounting Height/ 25' Grid Spacing

■ 5 FC ■ 2 FC ■ 1 FC ■ 0.5 FC

### POLAR CURVE





# Slice Medium Outdoor LED Area Light

## PHOTOMETRICS (CONT.)

### SLM-LED-30L-SIL-3-40-70CRI

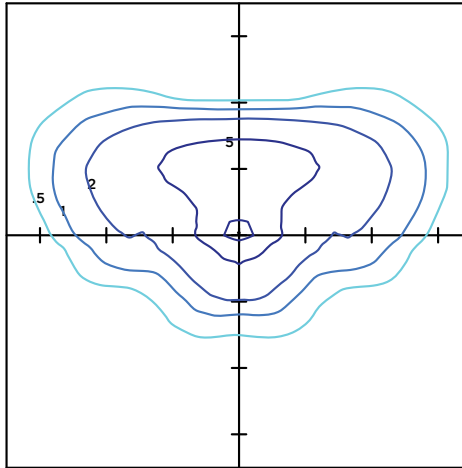
#### LUMINAIRE DATA

Type 3 Distribution	
Description	4000 Kelvin, 70 CRI
Delivered Lumens	32,266
Watts	248.6
Efficacy	130
IES Type	Type III - Short
BUG Rating	B3-U0-G4

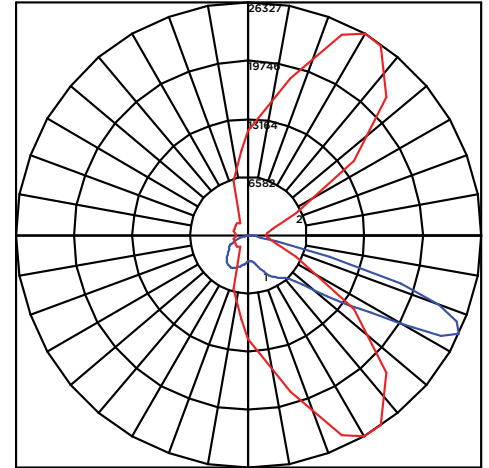
#### Zonal Lumen Summary

Zone	Lumens	%Luminaire
Low (0-30)°	3497	11%
Medium (30-60)°	16867	52%
High (60-80)°	11653	36%
Very High (80-90)°	248	1%
Uplight (90-180)°	0	0%
Total Flux	32266	100%

#### ISO FOOTCANDLE



#### POLAR CURVE



#### 25' Mounting Height/ 25' Grid Spacing

■ 5 FC ■ 2 FC ■ 1 FC ■ 0.5 FC

### SLM-LED-30L-SIL-FT-40-70CRI

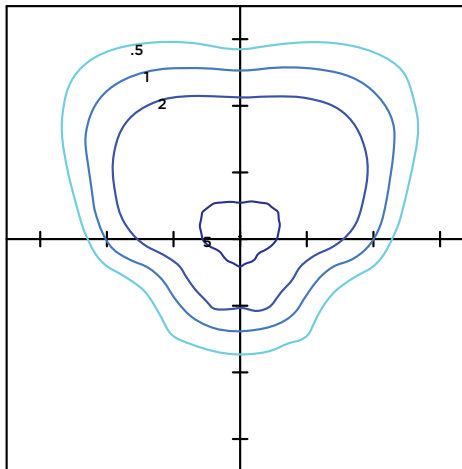
#### LUMINAIRE DATA

Type FT Distribution	
Description	4000 Kelvin, 70 CRI
Delivered Lumens	31,401
Watts	248.6
Efficacy	126
IES Type	Type IV - Short
BUG Rating	B3-U0-G4

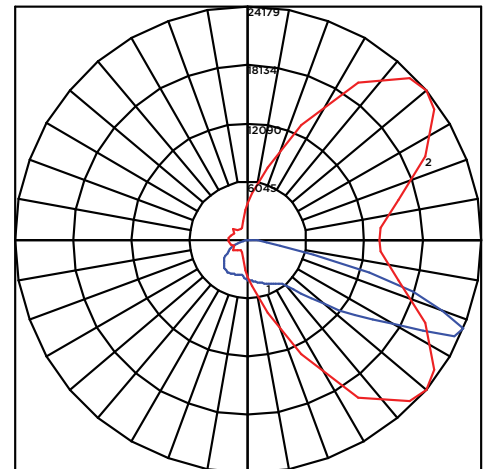
#### Zonal Lumen Summary

Zone	Lumens	%Luminaire
Low (0-30)°	3659	12%
Medium (30-60)°	14488	46%
High (60-80)°	12808	41%
Very High (80-90)°	447	1%
Uplight (90-180)°	0	0%
Total Flux	31402	100%

#### ISO FOOTCANDLE



#### POLAR CURVE



#### 25' Mounting Height/ 25' Grid Spacing

■ 5 FC ■ 2 FC ■ 1 FC ■ 0.5 FC





# Slice Medium Outdoor LED Area Light

## PHOTOMETRICS (CONT.)

### SLM-LED-30L-SIL-5W-40-70CRI

#### LUMINAIRE DATA

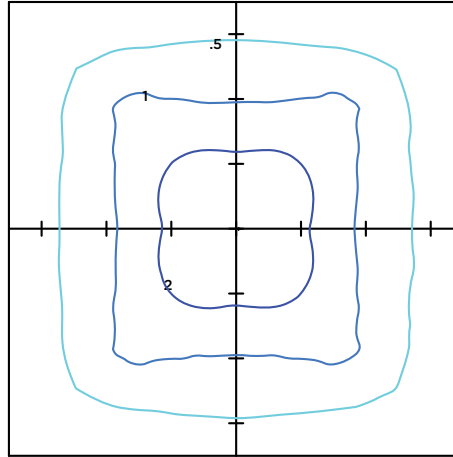
##### Type 5W Distribution

Description	4000 Kelvin, 70 CRI
Delivered Lumens	29,715
Watts	248.6
Efficacy	120
IES Type	Type IV - Short
BUG Rating	B5-U0-G3

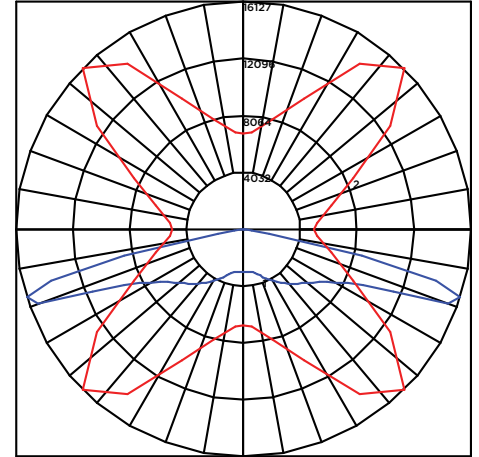
#### Zonal Lumen Summary

Zone	Lumens	%Luminaire
Low (0-30)°	2930	10%
Medium (30-60)°	11709	39%
High (60-80)°	14881	50%
Very High (80-90)°	194	1%
Uplight (90-180)°	0	0%
Total Flux	29715	100%

#### ISO FOOTCANDLE



#### POLAR CURVE



#### 25' Mounting Height/ 25' Grid Spacing

■ 5 FC ■ 2 FC ■ 1 FC ■ 0.5 FC

### SLM-LED-30L-SIL-FTA-40-70CRI

#### LUMINAIRE DATA

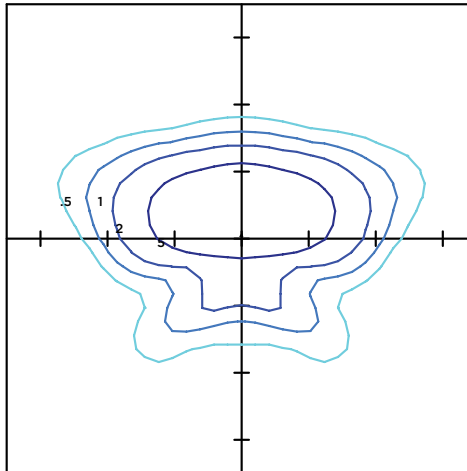
##### Type FTA Distribution

Description	4000 Kelvin, 70 CRI
Delivered Lumens	31,970
Watts	248.6
Efficacy	129
IES Type	Type II - Short
BUG Rating	B4-U0-G3

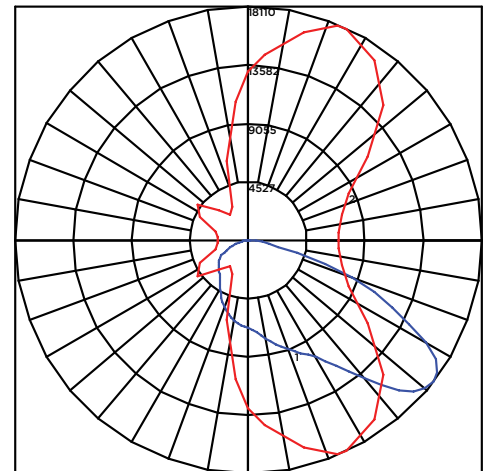
#### Zonal Lumen Summary

Zone	Lumens	%Luminaire
Low (0-30)°	5840	18%
Medium (30-60)°	19571	61%
High (60-80)°	6265	20%
Very High (80-90)°	294	1%
Uplight (90-180)°	0	0%
Total Flux	31970	100%

#### ISO FOOTCANDLE



#### POLAR CURVE



#### 25' Mounting Height/ 25' Grid Spacing

■ 5 FC ■ 2 FC ■ 1 FC ■ 0.5 FC







# Slice Medium Outdoor LED Area Light

## PHOTOMETRICS (CONT.)

SLM-LED-30L-SIL-AM-40-70CRI

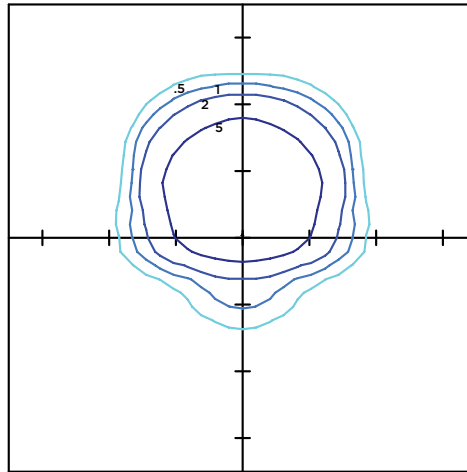
### LUMINAIRE DATA

Type AM Distribution	
Description	4000 Kelvin, 70 CRI
Delivered Lumens	32,590
Watts	249
Efficacy	131
IES Type	Type III - Very Short
BUG Rating	B3-U0-G3

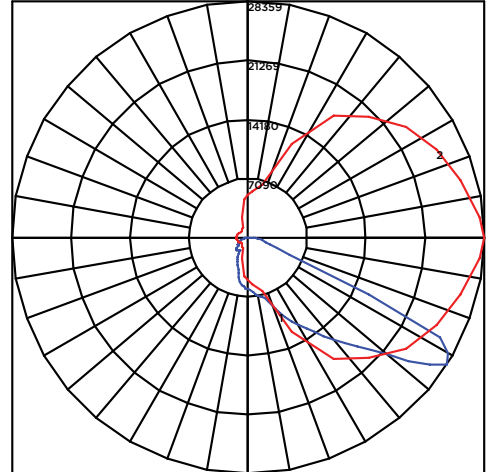
### Zonal Lumen Summary

Zone	Lumens	%Luminaire
Low (0-30)°	5652	17%
Medium (30-60)°	20618	63%
High (60-80)°	5956	18%
Very High (80-90)°	364	1%
Uplight (90-180)°	0	0%
Total Flux	32590	100%

### ISO FOOTCANDLE



### POLAR CURVE

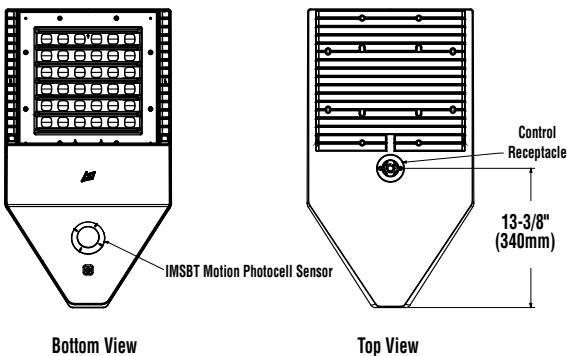
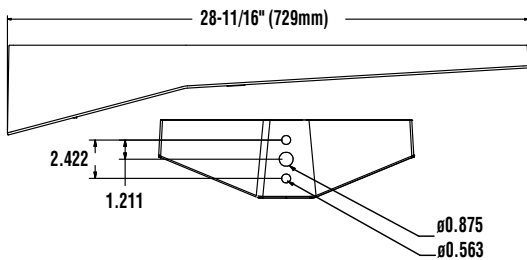
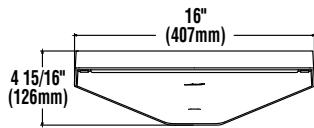


25' Mounting Height/ 25' Grid Spacing

■ 5 FC ■ 2 FC ■ 1 FC ■ 0.5 FC

## PRODUCT DIMENSIONS

[Back to Quick Links](#)



LUMINAIRE EPA CHART - SLM									
Tilt Degree		0°	30°	45°	Tilt Degree	0°	30°	45°	
■	Single	0.5	2.1	2.6	■	T90°	1.2	2.9	3.6
■	D180°	1.1	2.1	2.6	■	TN120°	1.3	4.4	5.4
■	D90°	0.9	2.5	3.1	■	Q90°	1.2	2.9	3.6





## CONTROLS

### AirLink Wireless Lighting Controller

The AirLink integrated controller is a California Title 24 compliant lighting controller that provides real-time light monitoring and control with utility-grade power monitoring. It includes a 24V sensor input and power supply to connect a sensor into the outdoor AirLink wireless lighting system.

The wireless integrated controller is compatible with this fixture.

Click the link below to learn more details about AirLink.

<https://www.lsicorp.com/documents/datasheets/airlink-outdoor-specsheet.pdf>

### Integral Bluetooth™ Motion and Photocell Sensor (IMSBT)

Slim low profile sensor provides multi-level control based on motion and/or daylight. Sensor controls 0-10 VDC LED drivers and is rated for cold and wet locations (-30° C to 70° C). Two unique PIR lenses are available and used based on fixture mounting height. All control parameters are adjustable via an iOS or Android App capable of storing and transmitting sensor profiles.

Click the link below to learn more details about IMSBT.

<https://www.lsicorp.com/documents/datasheets/imsbt-specsheet.pdf>

### AirLink Blue

Wireless Bluetooth Mesh Outdoor Lighting Control System that provides energy savings, code compliance and enhanced safety/security for parking lots and parking garages. Three key components; Bluetooth wireless radio/sensor controller, Time Keeper and an iOS App. Capable of grouping multiple fixtures and sensors as well as scheduling time-based events by zone. Radio/Sensor Controller is factory integrated into Area/Site, Wall Mounted, Parking Garage and Canopy luminaires.

Click the link below to learn more details about AirLink Blue.

<https://www.lsi-airlink.com/airlink-blue/>

## POLES & BRACKETS

LSI offers a full line of poles and mounting accessories to complete your lighting assembly. Aluminum and steel in both square and round shafts. In addition, LSI offers round tapered, fluted and hinge based poles. Designed and engineered for durability and protected with our oven baked DuraGrip Protection System. Also available with our DuraGrip+ Protection system for unmatched corrosion resistance and an extended warranty. American made in our Ohio facility with industry leading lead times.

Click the link below to learn more details about poles & brackets.

<https://www.lsicorp.com/products/poles-and-brackets-area-street.aspx>



#### BKA UMB CLR

The 3G rated UMB allows for seamless integration of LSI luminaires onto existing/ retrofit or new construction poles. The UMB was designed for square or round (tapered or straight) poles with two mounting hole spacings between 3.5" - 5".



#### BKS PQM15 CLR

The Pole Quick Mount Bracket allows for preset 15° uptilt of LSI luminaires for greater throw of light and increased vertical illumination as well as fast installation onto poles with LSI's 3" or 5" bolt pattern.



#### BKA ASF CLR

The adjustable Slip Fitter is a 3G rated rugged die cast aluminum adapter to mount LSI luminaires onto a 2" iron pipe, 2 3/8 OD tenon. The Adjustable Slip Fitter can be rotated 180° allowing for tilting LSI luminaires up to 45° and 90° when using a vertical tenon.



#### BKS PQMH CLR

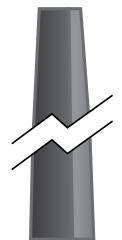
The Pole Quick Mount Bracket allows for lightning fast installation of LSI luminaires onto existing and new construction poles with LSI's B3 or B5 standard pole bolt patterns.



Square Pole  
14'-39'



Round Pole  
10'-30'



Tapered Pole  
20'-39'

