



LUBE KITS



PUMPS



METERS



METERED NOZZLES



NOZZLES



FILTRATION

EASY OIL

FEATURES

- BALANCED VALVE
- LIGHT PRESSURE LEVER
- ERGONOMIC HANDLE
- BUILT-IN FILTER
- BUILT-IN LEVER LOCK

The Piusi Easy oil is a manual nozzle suitable for the delivery of a wide range of oils. Its ergonomic and lightweight design make this nozzle unique in the market.

PERFORMANCE

up to

7.8 GPM

from 0.26 GPM

FLOW RATE

994 PSI

PRESSURE



without spout



with rigid spout

EASYOIL WITH FLEXIBLE SPOUT



PACKAGING

PART #	WEIGHT		PACKAGING			
	KG	LBS	MM	INCH	PCS/PALLET	PCS/BOX
FO096700A	0.45	1	203X320X88	8X12.6X3.5	-	1
FO0967120	1	2	203X320X88	8X12.6X3.5	-	1
FO0967110	1	2	203X320X88	8X12.6X3.5	-	1



FLUID MONITORING



HOSE REELS



AIR



ANTIFREEZE



DEF



BIODIESEL



DIESEL



FOOD



GASOLINE



GREASE



KEROSENE



OIL

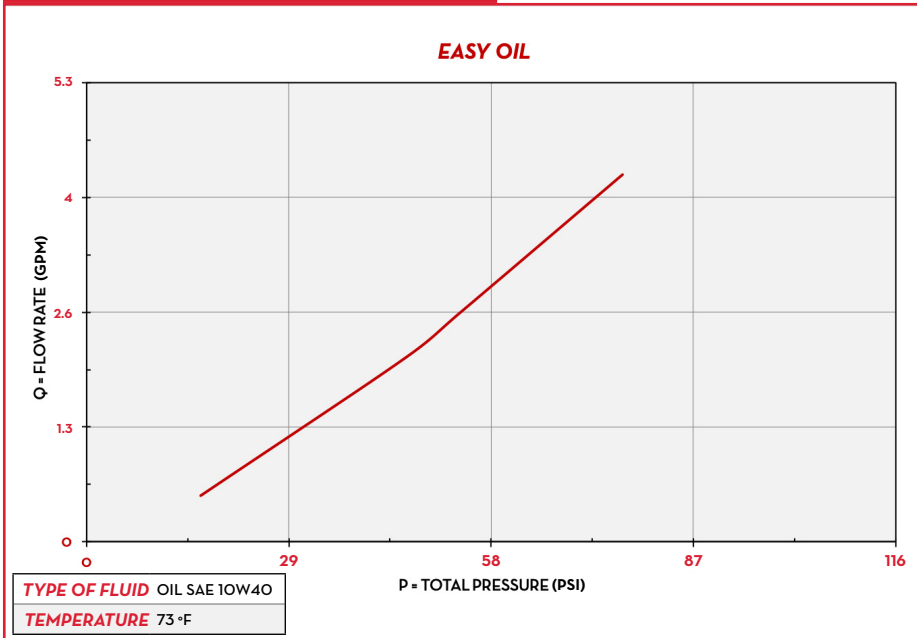


WATER



WINDSCREEN

CHARTS



IN THE BOX

- EASYOIL NOZZLE
- INSTRUCTION MANUAL

DETAILS



1/2" OUTLET

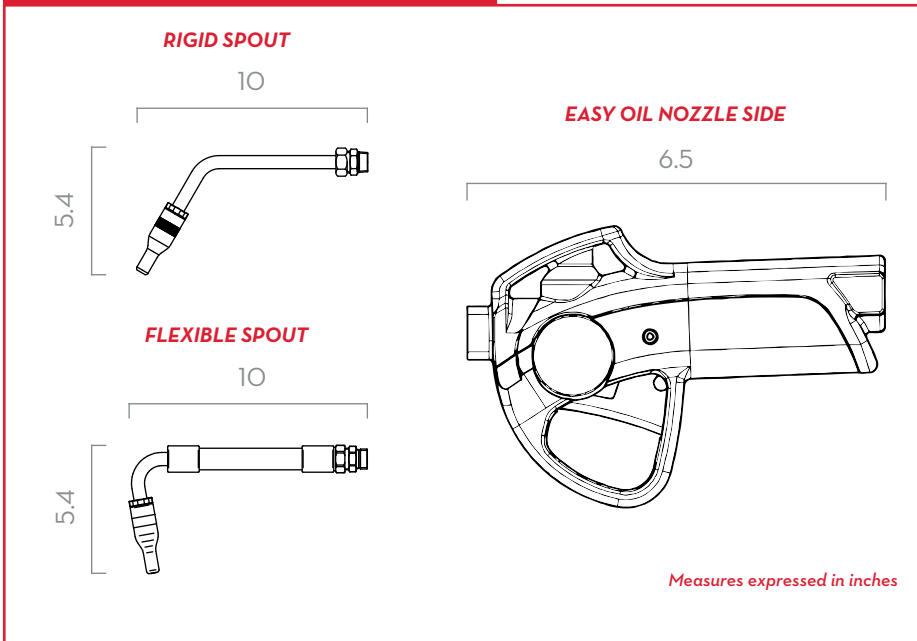


SWIVEL 1/2 NPT



ANTI-SHOCK HANDGRIP

DIMENSIONS



MATERIALS

- BODY: ALUMINUM
- VALVE: NBR, NICKEL PLATED STEEL, BRASS

TECHNICAL DATA

PART #	DESCRIPTION	FLUIDS TYPE	FLOW RATE		WORKING PRESSURE		SPOUT			OUTLET	INLET
			L/MIN	GPM	BAR	PSI	ROTATING	RIGID	FLEXIBLE		
FO096700A	EASY OIL HANDLE FF 1/2" BSP X 1/2" NPT		1 - 30	0,26 - 7,8	70	994	-	-	-	-	1/2" NPT
FO0967120	EASYOIL NOZZLE RIGID MAN. SPOUT 1/2" NPT		1 - 30	0,26 - 7,8	70	994	-	YES	-	RIGID EXT	1/2" NPT
FO0967110	EASYOIL NOZZLE FLEX MANUAL SPOUT 1/2" NPT		1 - 30	0,26 - 7,8	70	994	-	-	YES	FLEX EXT	1/2" NPT

BSP VERSION AVAILABLE

EASY OIL