

Refueling Tank Installation Instructions

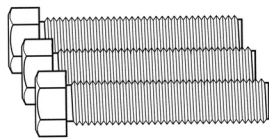
TOPS®

THIS TANK IS FOR PRIVATE USE AND IS TO BE USED ONLY AS A TRANSFER TANK! IT MUST NEVER BE CONNECTED TO A VEHICLE'S EXISTING FUEL SYSTEM AS AN AUXILIARY FUEL TANK!

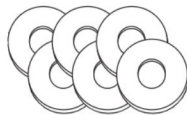
- Do not weld or cut on this tank for any reason.
- Do not pressurize this tank.
- This tank does meet D.O.T. requirements for flammable fuels. Note that gasoline is a flammable fuel.
- This tank must be mounted securely to the transporting vehicle truck.
- The hoisting rings must not be used when liquid is in the tank. It must be emptied before moving.
- Remove the filler cap slowly. Internal pressure can build up and vent suddenly when the cap is loosened.
- There must be a filter in the pump system used to transfer fluids from this tank.
- Follow the mounting instructions and use the rubber mounting kit provided. Proper mounting procedures must be observed to maximize the tank life. Mounting is not required, but is recommended.
- Improper mounting and/or use of third party kit in lieu of included rubber mounting kit will void warranty.
- Each state's Fire Marshall regulates fuel transportation, and the laws can vary from state to state.
- The tank user must contact the local authorities for correct regulations before filling this tank.
- The filler cap provided with this tank is designed to relieve pressure at 2 to 3.5 psi, and vacuum release at 2 oz. Transfer pumps with a flow rate greater than 25 GPM will exceed the cap's ability to vent.

Required Hardware :

Hardware Package



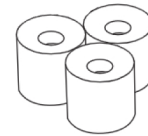
3 - 1/2 Mounting Bolt



6 - 1/2 Fender Washer



3 - 1/2 Nylock Nut

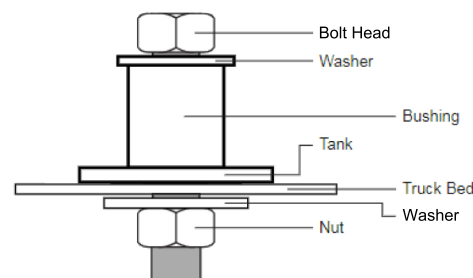


3 - Rubber Bushing

MOUNTING PROCEDURE:

1. Check the hardware kit to ensure that all components are accounted for. Refer to the kit component list.
2. Place the tank in the desired location in the bed of pick-up (Be sure the tank is not rubbing the edges of the cargo bed).
3. Mark location of (3) mounting holes in the mounting bracket at the desired location (Remove tank before drilling holes).
4. Drill 9/16" holes in marked locations (CAUTION!: Check to ensure the area is free of fuel lines, brake lines, and wiring).
5. a) Slip tank mounting feet over drilled 9/16" holes.
b) On top of tank mounting feet, attach Bushings, Fender Washers & Mounting Bolts.
c) Secure Mounting Bolts by attaching remaining Washer & Nut onto the bottom of each Mounting Bolt underneath truck bed.
6. Do not over tighten Nut! Compress bushing 1/8" to 1/4" only!

7. (OPTIONAL) If your tank included a pump at time of purchase, please see the instructions included in the pump packaging for proper mounting procedure.



**Questions please call:
1-877-230-2736**